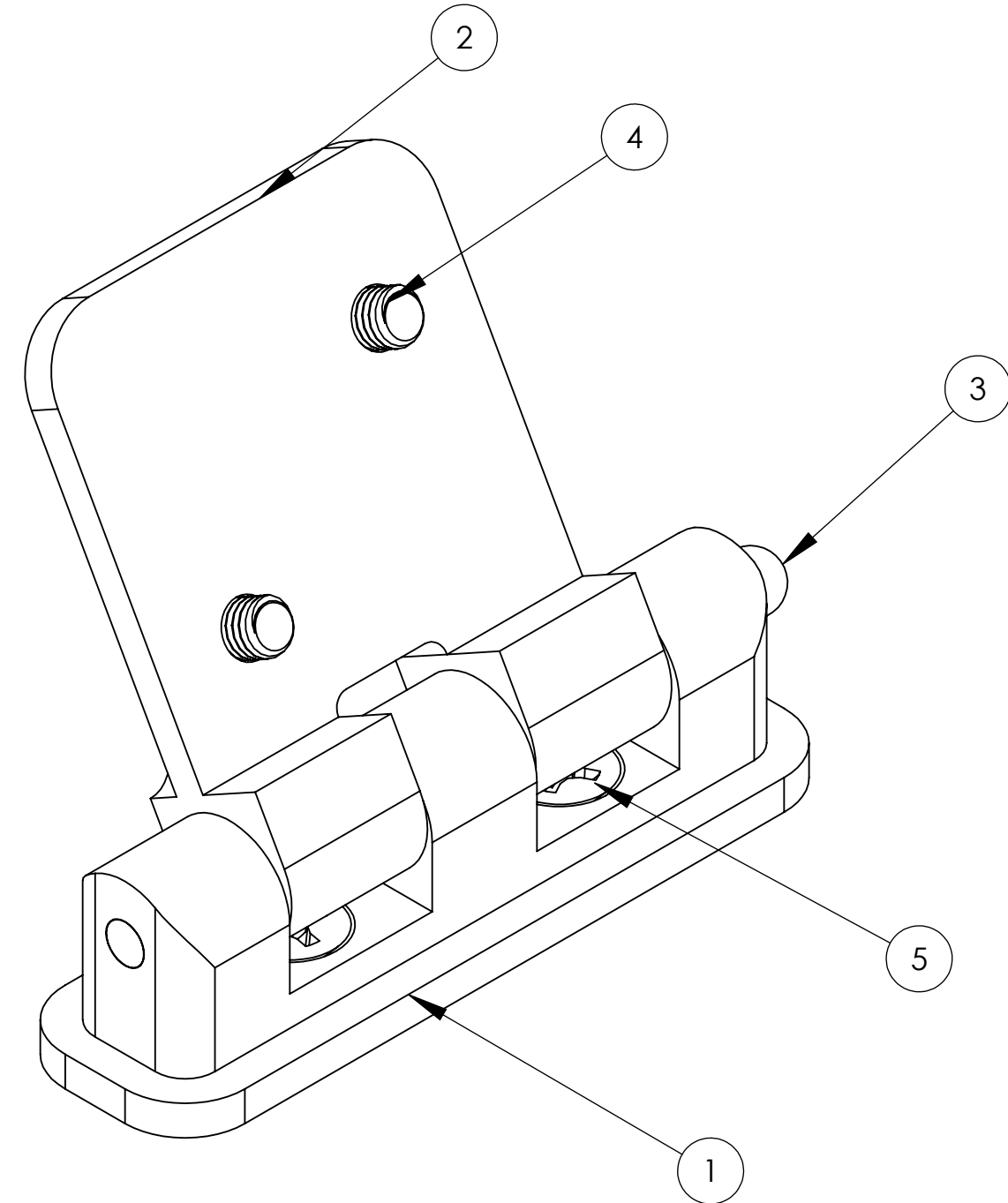


ITEM NO.	PART NUMBER	DESCRIPTION	QTY.
1	LAS-999-40	BASE HINGE	1
2	LAS-999-42	DOOR HINGE PLATE	1
3	LAS-999-43	HINGE PIN - WELD ROD	1
4	60111J	10-32 X 3/8	2
5	60111G	10-32 X 1/2"	2

PART REVISION HISTORY					
REV.	DESCRIPTION	ECO	DWN	CHKD	DATE
A	RELEASED				8/12/2015



NOTICE ON REPRODUCTIONS
 THIS DRAWING, THE DESIGN, AND THE PATENTS IT COVERS ARE THE PROPERTY OF ACTIVAR, INC., OR THEIR CUSTOMERS. THEY WILL NOT BE REPRODUCED, COPIED, LOANED, EXHIBITED NOR USED EXCEPT IN THE LIMITED WAY AND THE PRIVATE USE PERMITTED BY THE CONSENT GIVEN BY THE LENDER TO THE BORROWER.

TOLERANCES UNLESS OTHERWISE SPECIFIED (U.O.S.)			
DECIMALS	C'BREAKS	FRAC.	MACH. FIN.
.XX = ± .060	.010/.020	1/16	125
.XXX = ± .030	FILLETS	ANGLES	1°
.XXXX = ± .015	.030 MAX		



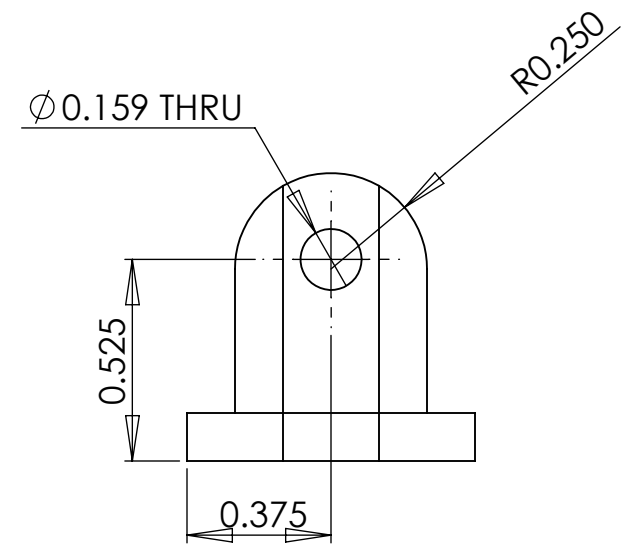
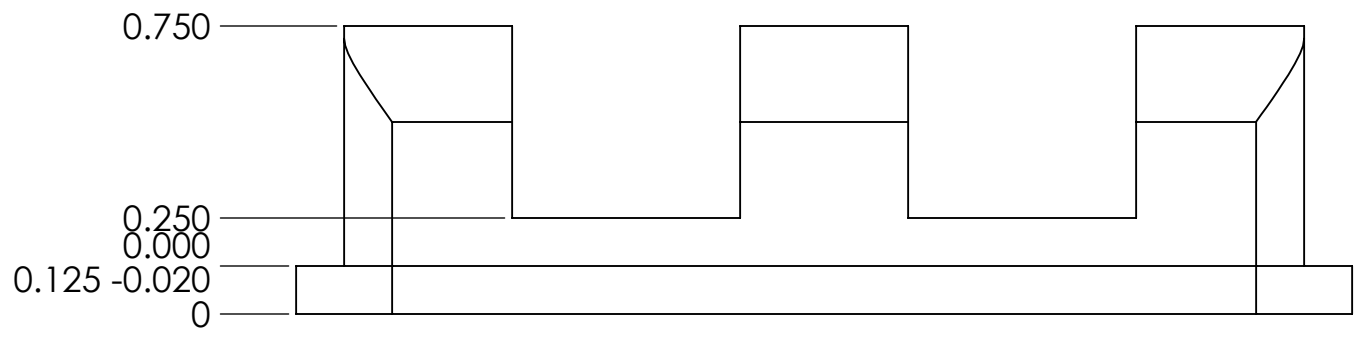
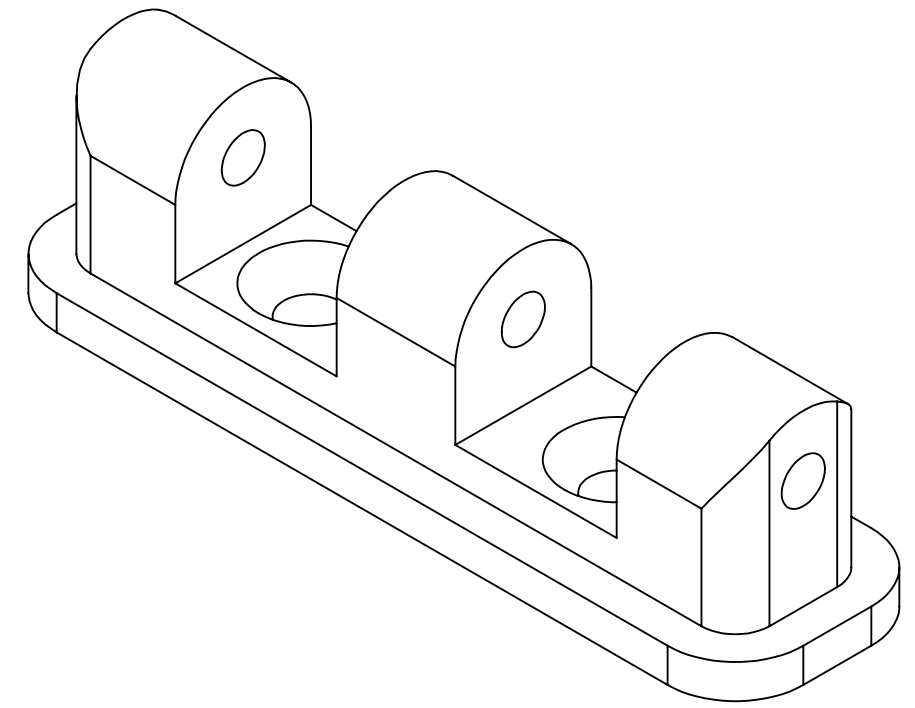
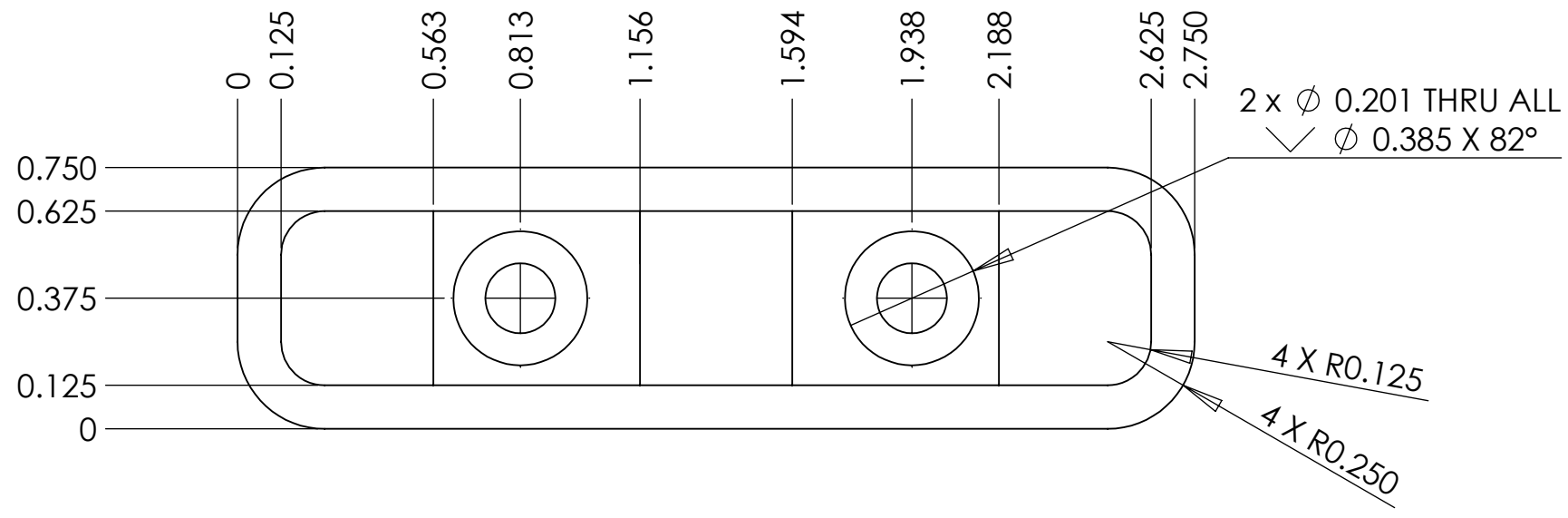
500LYE - COLOR MOP
 9650 NEWTON AVE. S., BLOOMINGTON, MN 55420

MATERIAL POLYPROPYLENE		TITLE: HINGE ASSEMBLY	
FINISH WHITE		DESIGNED C. CHRISTOPHERSON	
DATE 8/12/2015	DATE	SIZE B	PART NO. LAS-999-40
CHECKED	DATE	THIRD ANGLE	PART REV. A

SCALE: NONE	SHEET 1 OF 3	DWG.NO.
-------------	--------------	---------



PART REVISION HISTORY					
REV.	DESCRIPTION	ECO	DWN	CHKD	DATE
A	RELEASED				



BASE HINGE
3/4" POLYPROPYLENE

NOTICE ON REPRODUCTIONS
THIS DRAWING, THE DESIGN, AND THE PATENTS IT COVERS ARE THE PROPERTY OF ACTIVAR, INC., OR THEIR CUSTOMERS. THEY WILL NOT BE REPRODUCED, COPIED, LOANED, EXHIBITED NOR USED EXCEPT IN THE LIMITED WAY AND THE PRIVATE USE PERMITTED BY THE CONSENT GIVEN BY THE LENDER TO THE BORROWER.



TOLERANCES UNLESS OTHERWISE SPECIFIED (U.O.S.)			
DECIMALS	C'BREAKS	FRAC.	MACH. FIN.
.XX = ± .060	.010/.020	1/16	125 \checkmark
.XXX = ± .030	FILLETS	ANGLES	1°
.XXXX = ± .015	.030 MAX		

9650 NEWTON AVE. S., BLOOMINGTON, MN 55420

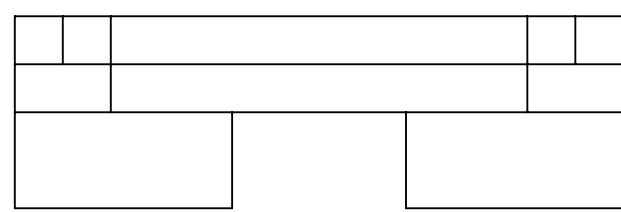
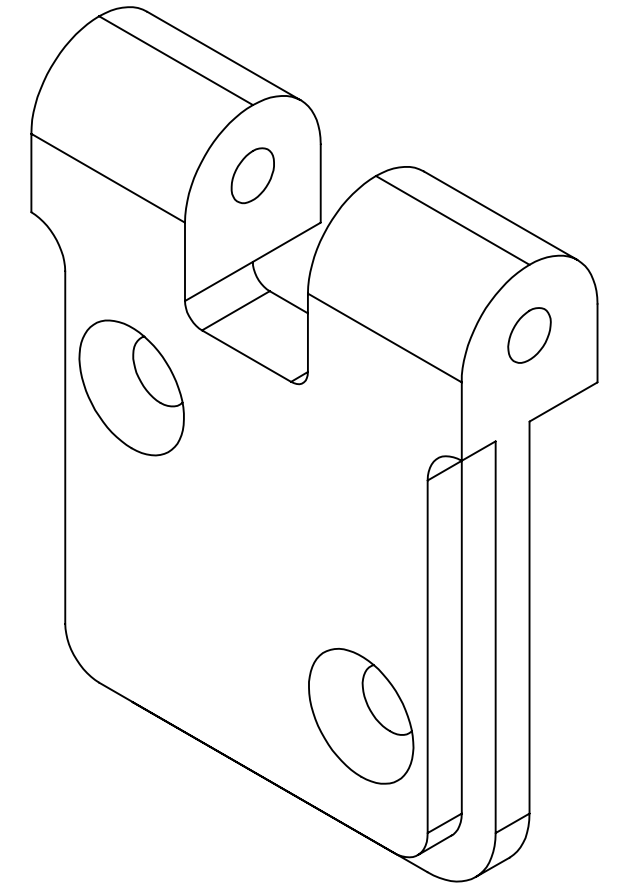
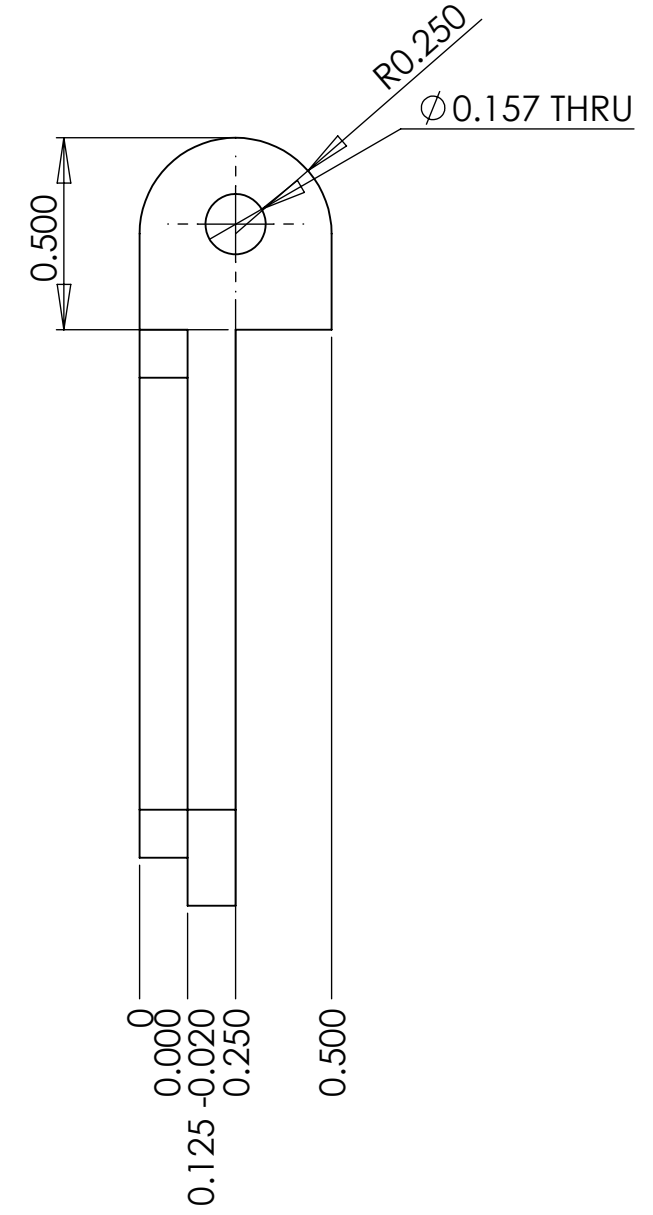
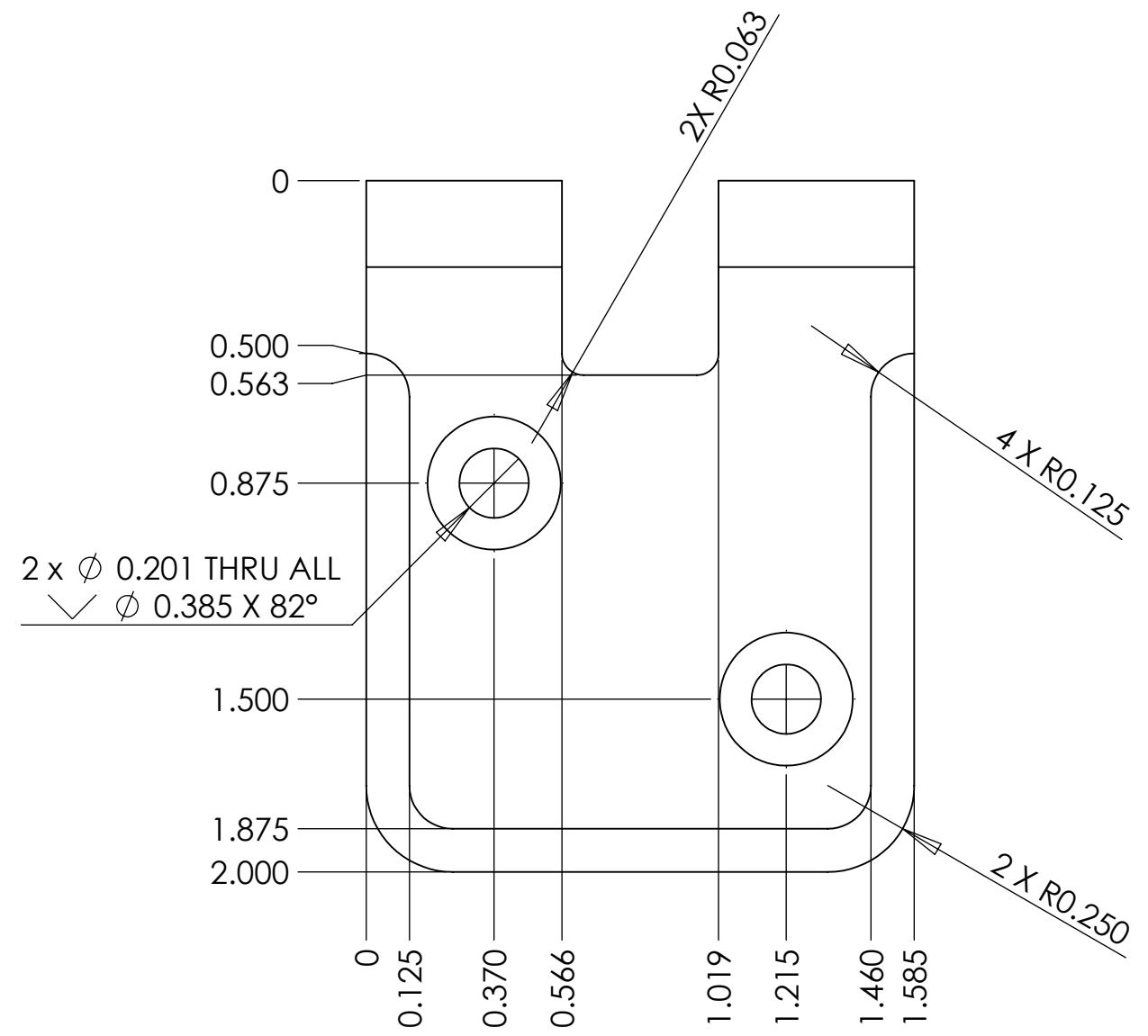
MATERIAL 3/4" POLYPROPYLENE		TITLE: BASE HINGE	
FINISH White		PART NO. LAS-999-40	
DESIGNED C. CHRISTOPHERSON	DATE	SIZE B	THIRD ANGLE
CHECKED	DATE	SCALE: NONE	SHEET 2 OF 3

DATE	DATE	DWG.NO.



PART REVISION HISTORY					
REV.	DESCRIPTION	ECO	DWN	CHKD	DATE
A	RELEASED				8/12/2015

D
C
B
A



DOOR HINGE PLATE
1/2" POLYPROPYLENE

NOTICE ON REPRODUCTIONS
 THIS DRAWING, THE DESIGN, AND THE PATENTS IT COVERS ARE THE PROPERTY OF ACTIVAR, INC., OR THEIR CUSTOMERS. THEY WILL NOT BE REPRODUCED, COPIED, LOANED, EXHIBITED NOR USED EXCEPT IN THE LIMITED WAY AND THE PRIVATE USE PERMITTED BY THE CONSENT GIVEN BY THE LENDER TO THE BORROWER.

TOLERANCES UNLESS OTHERWISE SPECIFIED (U.O.S.)			
DECIMALS	C'BREAKS	FRAC.	MACH. FIN.
.XX = ± .060	.010/.020	1/16	125 \checkmark
.XXX = ± .030	FILLETS	ANGLES	1°
.XXXX = ± .015	.030 MAX		



500BYE - COLOR mmp
 9650 NEWTON AVE. S., BLOOMINGTON, MN 55420

MATERIAL 1/2" POLYPROPYLENE		TITLE: DOOR HINGE PLATE	
FINISH WHITE		PART NO. LAS-999-40	
DESIGNED C. CHRISTOPHERSON	DATE 3/10/2010	SIZE B	PART REV. A
CHECKED	DATE	SCALE: NONE	SHEET 3 OF 3

DWG. NO.	
----------	--



8 7 6 5 4 3 2 1

8 7 6 5 4 3 2 1