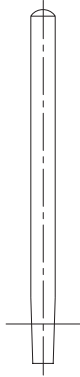


3/4" Aluminum Apparatus Rod Components

AAP110-XXX

3/4" Diameter Aluminum Vertical Rod,
Tapered End

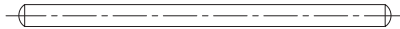


MODEL NO.	LENGTH
AAP110-012	12"
AAP110-018	18"
AAP110-024	24"
AAP110-030	30"

MODEL NO.	LENGTH
AAP110-036	36"
AAP110-039	39"
AAP110-048	48"

AAP155-XXX

3/4" Diameter Aluminum Crossbar

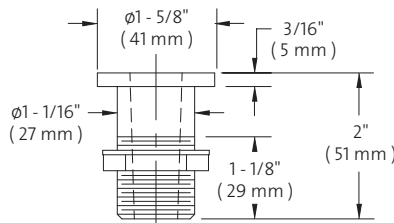


MODEL NO.	LENGTH
AAP155-012	12"
AAP155-018	18"
AAP155-024	24"
AAP155-030	30"
AAP155-036	36"
AAP155-039	39"

MODEL NO.	LENGTH
AAP155-042	42"
AAP155-048	48"
AAP155-054	54"
AAP155-060	60"
AAP155-066	66"
AAP155-072	72"

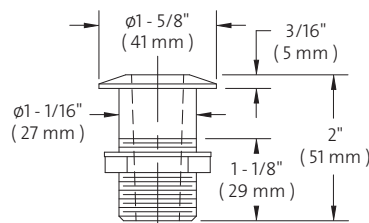
AAP100

Aluminum Apparatus Rod Socket
for Recess Mounting



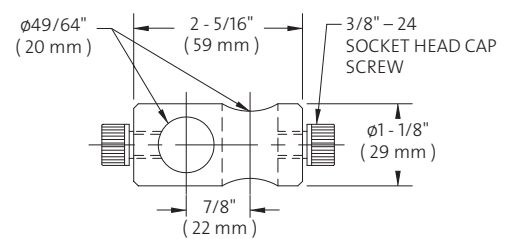
AAP101

Aluminum Apparatus Rod Socket for
Surface Mounting



AAP150

3/4" Adjustable Clamp



NOTE:

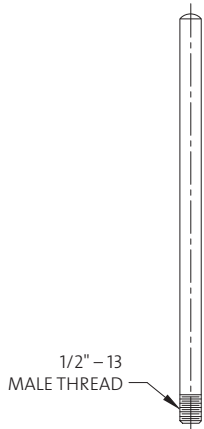
1. ALUMINUM APPARATUS COMPONENTS ARE FURNISHED WITH A SATIN (BRUSHED) ALUMINUM FINISH.

Measurements may vary $\pm 1/4"$.

1/2" Aluminum Lattice Rod Components

AAP125-XXX

1/2" Diameter Aluminum Lattice Rod with Threaded End for Vertical Mounting

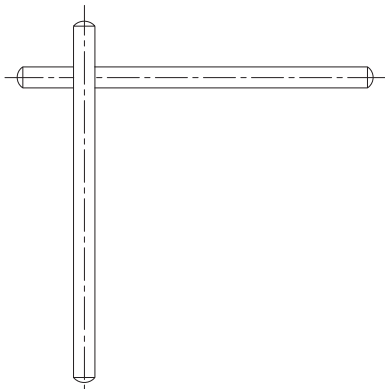


MODEL NO.	LENGTH
AAP125-006	6"
AAP125-007	7"
AAP125-008	8"
AAP125-010	10"
AAP125-012	12"
AAP125-018	18"
AAP125-024	24"
AAP125-030	30"

MODEL NO.	LENGTH
AAP125-036	36"
AAP125-036-08	36 1/2"
AAP125-042	42"
AAP125-048	48"
AAP125-060	60"
AAP125-066	66"
AAP125-072	72"

AAP145-XXX

1/2" Diameter Aluminum Lattice Rod for Vertical or Horizontal Mounting



MODEL NO.	LENGTH
AAP145-006	6"
AAP145-007	7"
AAP145-008	8"
AAP145-010	10"
AAP145-012	12"
AAP145-016	16"
AAP145-018	18"
AAP145-024	24"
AAP145-030	30"
AAP145-035	35"
AAP145-035-08	35 1/2"
AAP145-036	36"
AAP145-036-08	36 1/2"
AAP145-038	38"

MODEL NO.	LENGTH
AAP145-040	40"
AAP145-042	42"
AAP145-046	46"
AAP145-048	48"
AAP145-054	54"
AAP145-060	60"
AAP145-062	62"
AAP145-066	66"
AAP145-072	72"
AAP145-084	84"
AAP145-086-08	86 1/2"
AAP145-096	96"
AAP145-110	110"

NOTE:

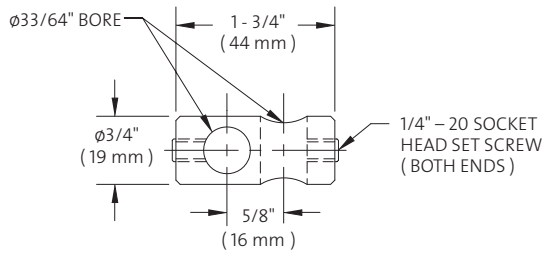
1. ALUMINUM LATTICE ROD COMPONENTS ARE FURNISHED WITH A SATIN (BRUSHED) ALUMINUM FINISH.

Measurements may vary $\pm 1/4$ ".

1/2" Aluminum Lattice Rod Components

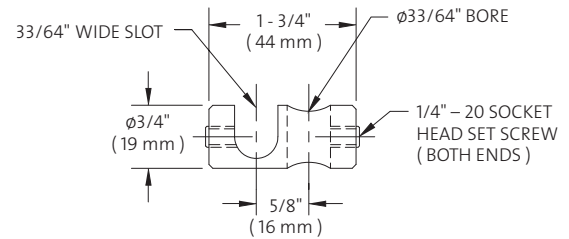
AAP151

1/2" Aluminum Adjustable Clamp,
Closed Style



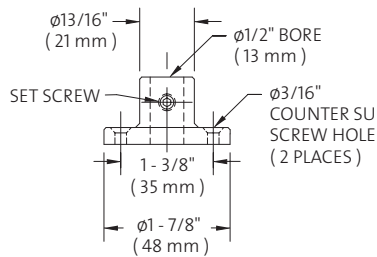
AAP153

1/2" Aluminum Adjustable Clamp,
Half-Open Style



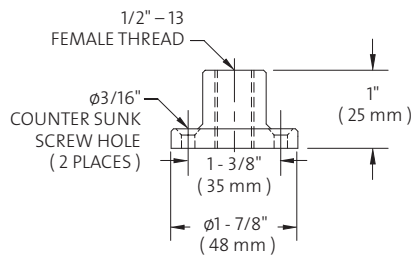
AAP158

Aluminum Adjustable Flange
with Set Screw



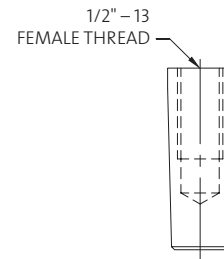
AAP158A

Aluminum Threaded Flange



AAP120

Tapered Plug To Fit
AAP100/101 Sockets



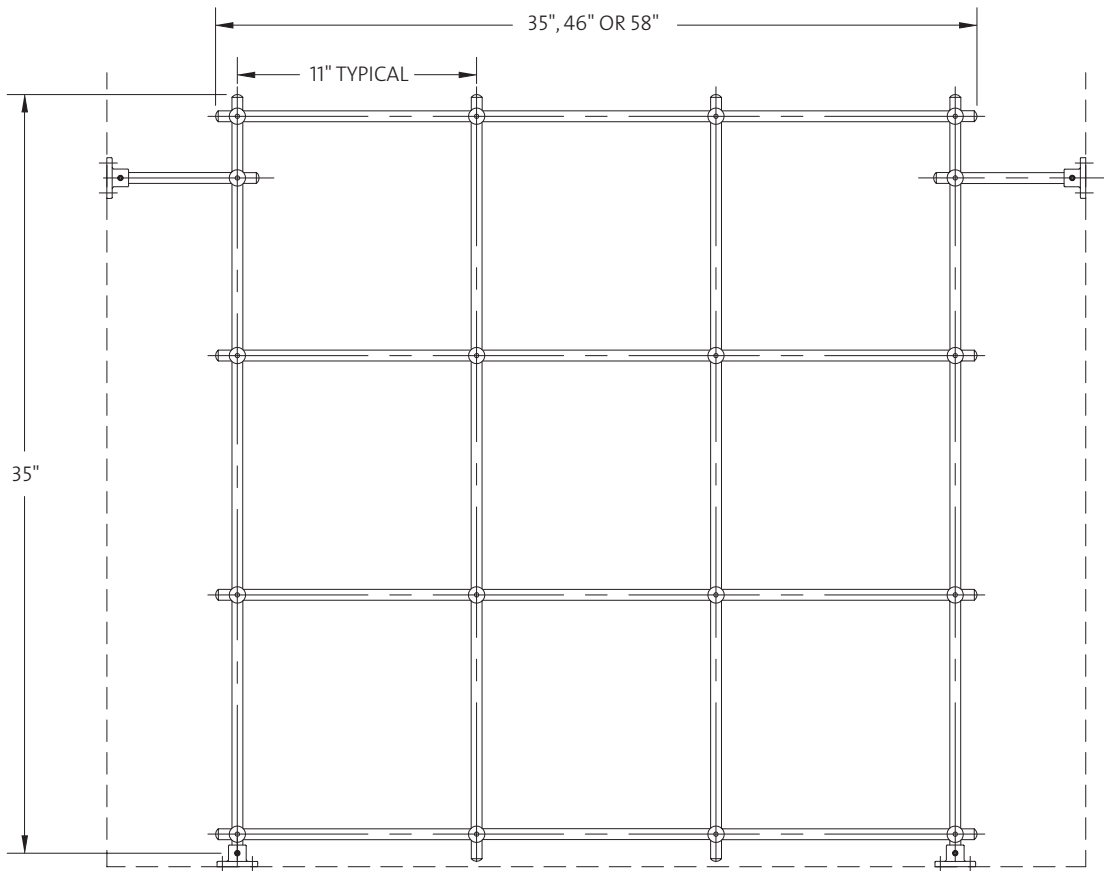
NOTES:

1. ALUMINUM LATTICE ROD COMPONENTS ARE FURNISHED WITH A SATIN (BRUSHED) ALUMINUM FINISH.
2. HALF-OPEN STYLE CLAMPS FACILITATE ADDING OR REMOVING RODS TO EXISTING ASSEMBLY.

Measurements may vary $\pm 1/4$ ".



○ AAP010 Aluminum Lattice Rod Assemblies for Fume Hood, Deck Mounted



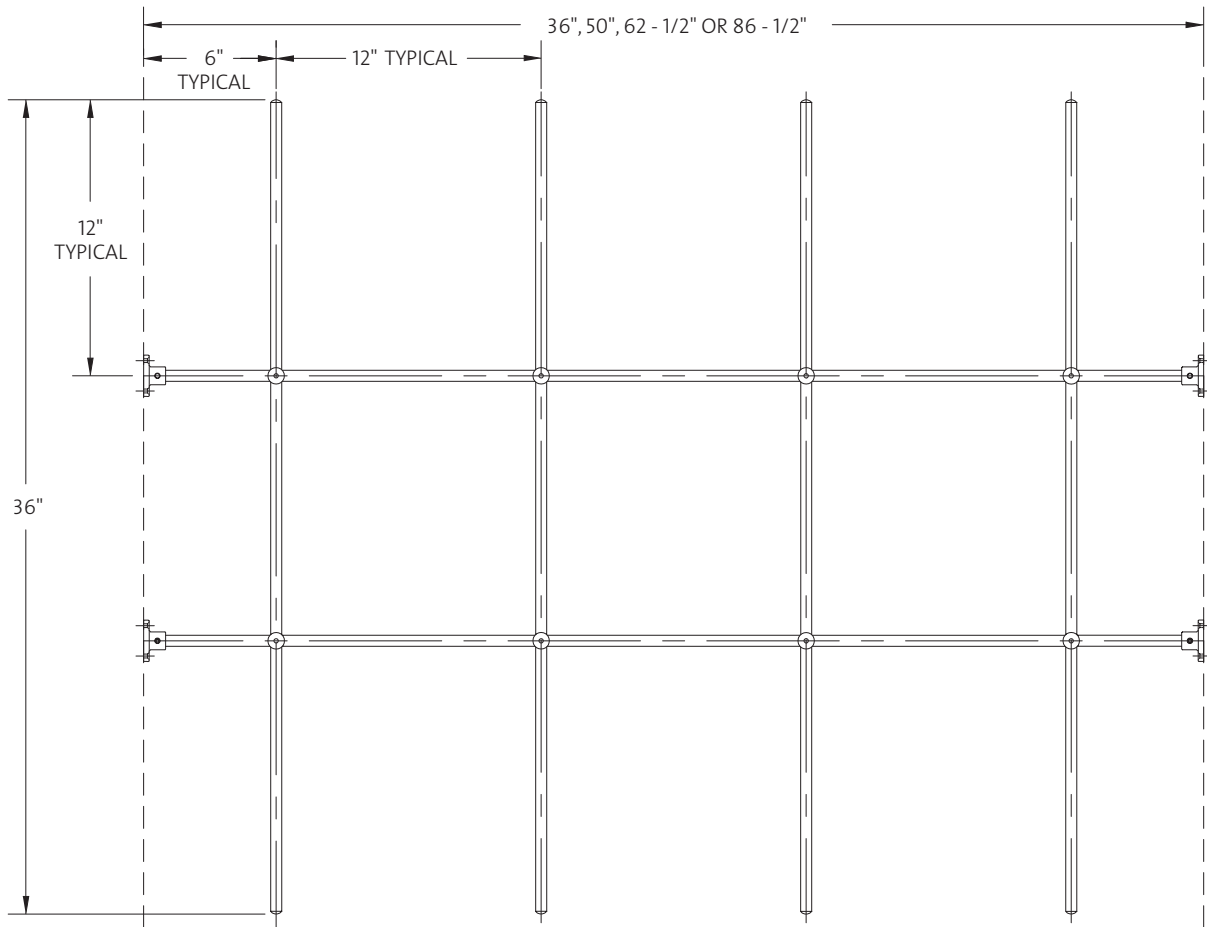
BILL OF MATERIALS		AAP010 - 035 - 035 3'H x 3'W ASSEMBLY	AAP010 - 035 - 046 3'H x 4'W ASSEMBLY	AAP010 - 035 - 058 3'H x 5'W ASSEMBLY
AAP145 - 007	Tie Rod	2	2	2
AAP145 - 035 - 08	35 - 1/2" Vertical Rod (Outside)	2	2	2
AAP145 - 035	35" Vertical Rod (Inside)	2	3	4
AAP145 - 035	35" Horizontal Rod	4	—	—
AAP145 - 046	46" Horizontal Rod	—	4	—
AAP145 - 058	58" Horizontal Rod	—	—	4
AAP151	Adjustable Clamp (Closed Style)	2	2	2
AAP153	Adjustable Clamp (Half-Open Style)	16	20	24
AAP158	Adjustable Flange	4	4	4

NOTES:

1. ALUMINUM LATTICE ROD COMPONENTS ARE FURNISHED WITH A SATIN (BRUSHED) ALUMINUM FINISH.
2. BACKING PLATES FOR HOOD WALL AND MOUNTING SCREWS FOR FLANGES ARE NOT INCLUDED.

Measurements may vary $\pm 1/4"$.

○ AAP015 Aluminum Lattice Rod Assemblies for Fume Hood, Wall Mounted



BILL OF MATERIALS		AAP015 - 036 - 036 3'H x 3'W ASSEMBLY	AAP015 - 036 - 050 3'H x 4'W ASSEMBLY	AAP015 - 036 - 062 3'H x 5'W ASSEMBLY	AAP015 - 036 - 086 3'H x 7'W ASSEMBLY
AAP145 - 036	36" Vertical Rod	3	4	5	7
AAP145 - 036	36" Horizontal Rod	2	-	-	-
AAP145 - 050	50" Horizontal Rod	-	2	-	-
AAP145 - 062 - 08	62 - 1/2" Horizontal Rod	-	-	2	-
AAP145 - 086 - 08	86 - 1/2" Horizontal Rod	-	-	-	2
AAP153	Adjustable Clamp (Half-Open Style)	6	8	10	14
AAP158	Adjustable Flange	4	4	4	4

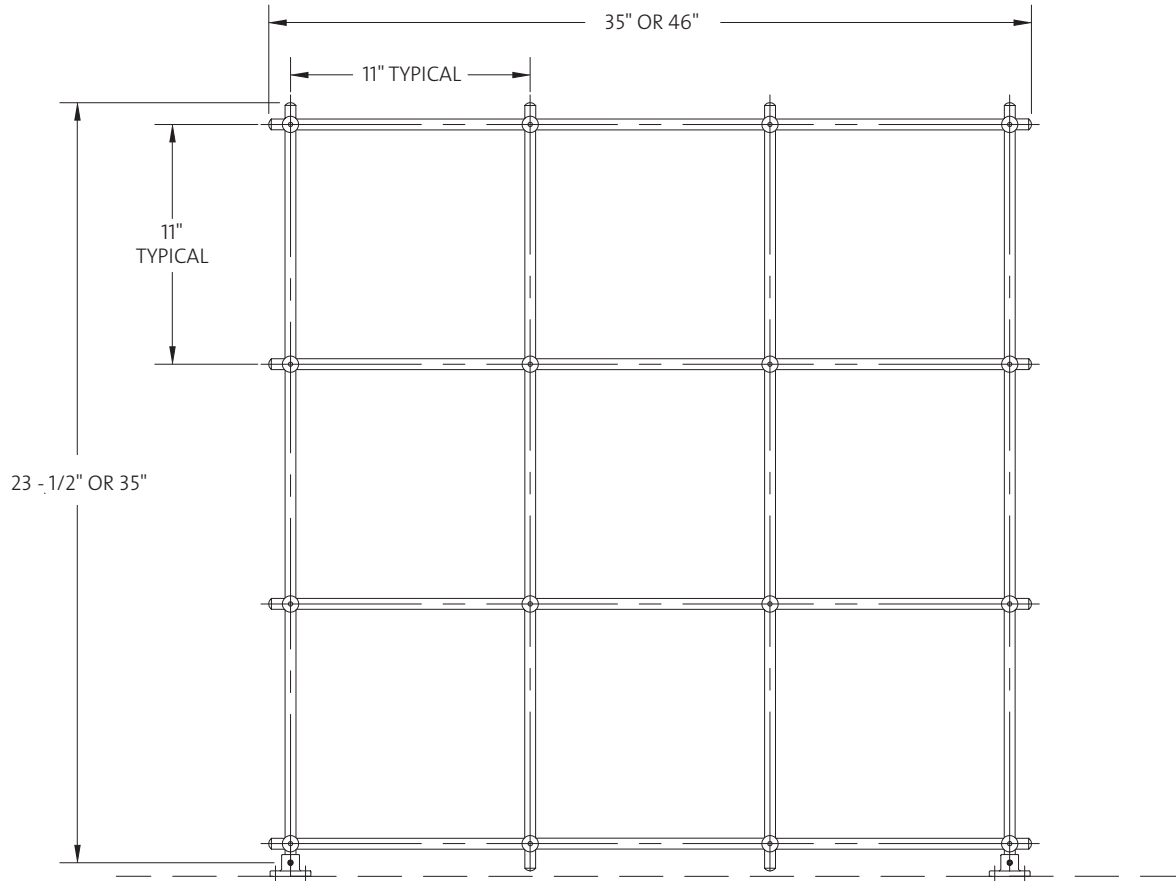
NOTES:

1. ALUMINUM LATTICE ROD COMPONENTS ARE FURNISHED WITH A SATIN (BRUSHED) ALUMINUM FINISH.
2. BACKING PLATES FOR HOOD WALL AND MOUNTING SCREWS FOR FLANGES ARE NOT INCLUDED.

Measurements may vary $\pm 1/4$ ".



○ AAP050 Aluminum Lattice Rod Assemblies for Bench Mounting



BILL OF MATERIALS		AAP050 - 023 - 035 2'H x 3'W ASSEMBLY	AAP050 - 023 - 046 2'H x 4'W ASSEMBLY	AAP050 - 035 - 036 3'H x 3'W ASSEMBLY	AAP050 - 035 - 046 3'H x 4'W ASSEMBLY
AAP145 - 024	24" Vertical Rod (Outside)	2	2	–	–
AAP145 - 035 - 08	35 - 1/2" Vertical Rod (Outside)	–	–	2	2
AAP145 - 023	23" Vertical Rod (Inside)	2	3	–	–
AAP145 - 035	35" Vertical Rod (Inside)	–	–	2	3
AAP145 - 036	35" Horizontal Rod	3	–	4	–
AAP145 - 046	46" Horizontal Rod	–	3	–	4
AAP153	Adjustable Clamp (Half-Open Style)	12	15	16	20
AAP158	Adjustable Flange	2	2	2	2

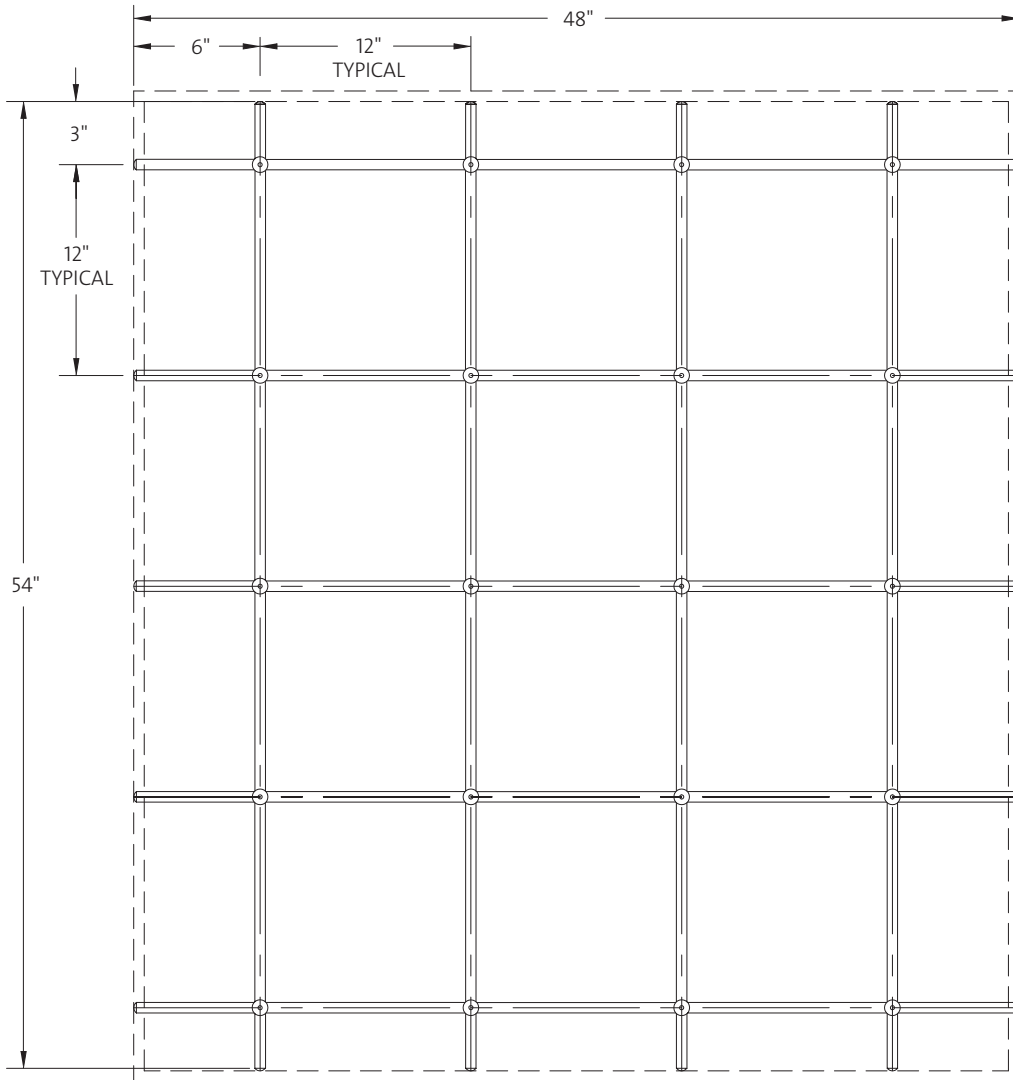
NOTES:

1. ALUMINUM LATTICE ROD COMPONENTS ARE FURNISHED WITH A SATIN (BRUSHED) ALUMINUM FINISH.
2. BACKING PLATES FOR HOOD WALL AND MOUNTING SCREWS FOR FLANGES ARE NOT INCLUDED.

Measurements may vary $\pm 1/4$ ".



○ AAP062 Aluminum Lattice Rod Assembly for Wall Mounting



BILL OF MATERIALS		AAP062 - 054 - 048 4 - 1/2'H x 4'W ASSEMBLY
AAP145 - 054	54" Vertical Rod	4
AAP145 - 048	48" Horizontal Rod	5
AAP153	Adjustable Clamp (Half-Open Style)	20

NOTES:

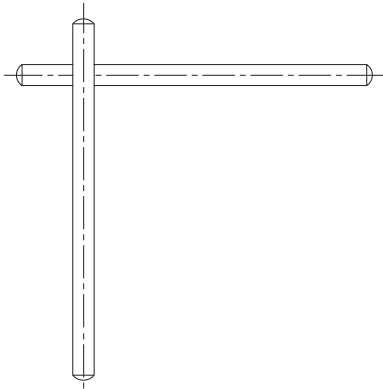
1. ALUMINUM LATTICE ROD COMPONENTS ARE FURNISHED WITH A SATIN (BRUSHED) ALUMINUM FINISH.
2. BACKING PLATES FOR HOOD WALL AND MOUNTING SCREWS FOR FLANGES ARE NOT INCLUDED.

Measurements may vary $\pm 1/4$ ".

1/2" Plastic Apparatus Rod Components

PAP145-XXX

1/2" Diameter White Fiberglass Lattice Rod for Vertical or Horizontal Mounting

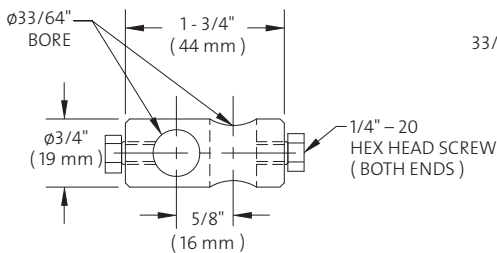


MODEL NO.	LENGTH
PAP145-006	6"
PAP145-007	7"
PAP145-008	8"
PAP145-010	10"
PAP145-012	12"
PAP145-016	16"
PAP145-018	18"
PAP145-024	24"
PAP145-030	30"
PAP145-035	35"
PAP145-035-08	35 1/2"
PAP145-036	36"
PAP145-036-08	36 1/2"
PAP145-038	38"

MODEL NO.	LENGTH
PAP145-040	40"
PAP145-042	42"
PAP145-046	46"
PAP145-048	48"
PAP145-054	54"
PAP145-060	60"
PAP145-062	62"
PAP145-066	66"
PAP145-072	72"
PAP145-084	84"
PAP145-086-08	86 1/2"
PAP145-096	96"
PAP145-110	110"

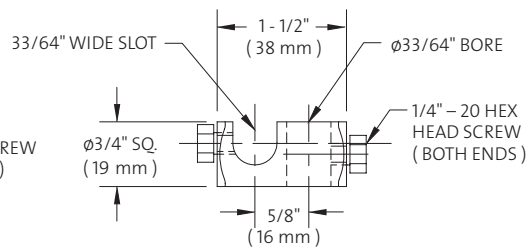
PAP151

1/2" Black Nylon Adjustable Clamp, Closed Style



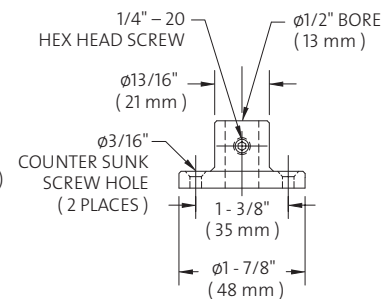
PAP153

1/2" Black Nylon Adjustable Clamp, Half-Open Style



PAP158

Black Nylon Adjustable Flange with Hex Head Screw

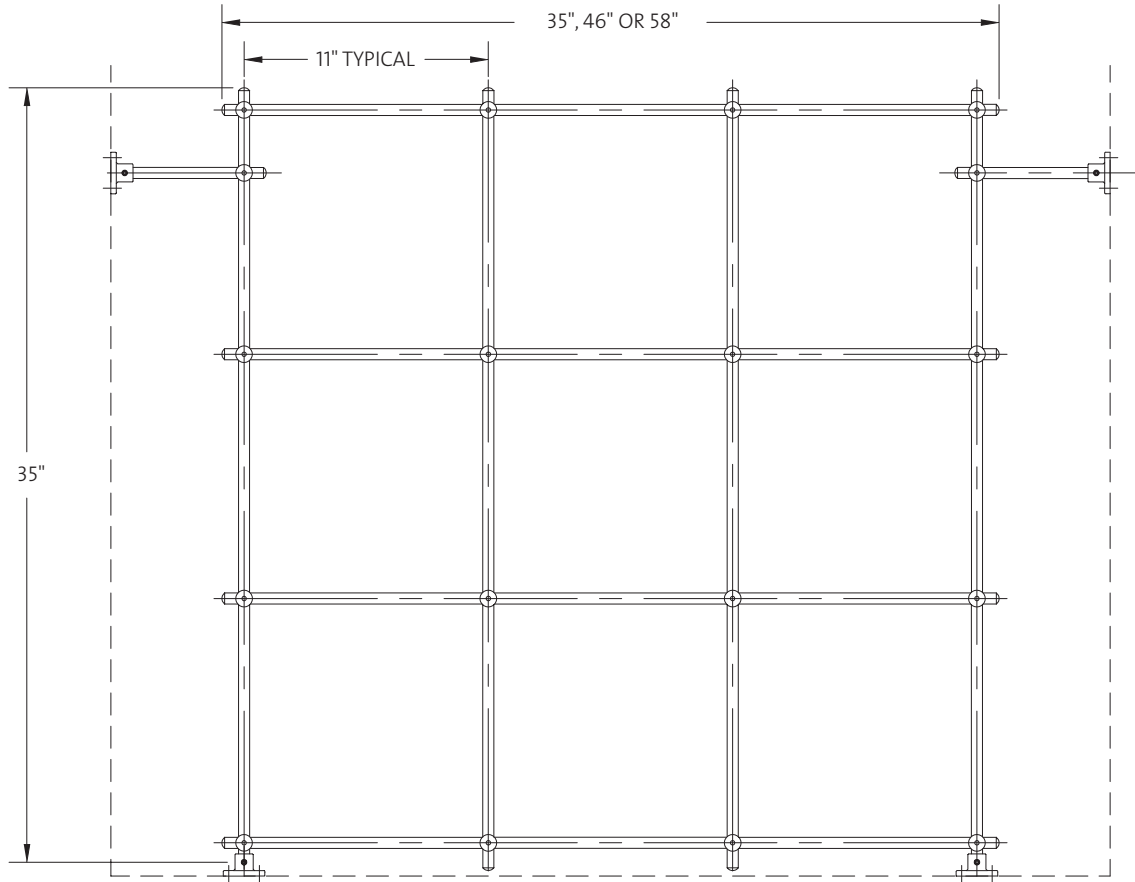


NOTE:

1. HALF-OPEN STYLE CLAMPS FACILITATE ADDING OR REMOVING RODS TO EXISTING ASSEMBLY.

Measurements may vary $\pm 1/4$ ".

○ PAPA010 Plastic Lattice Rod Assemblies for Fume Hood, Deck Mounted



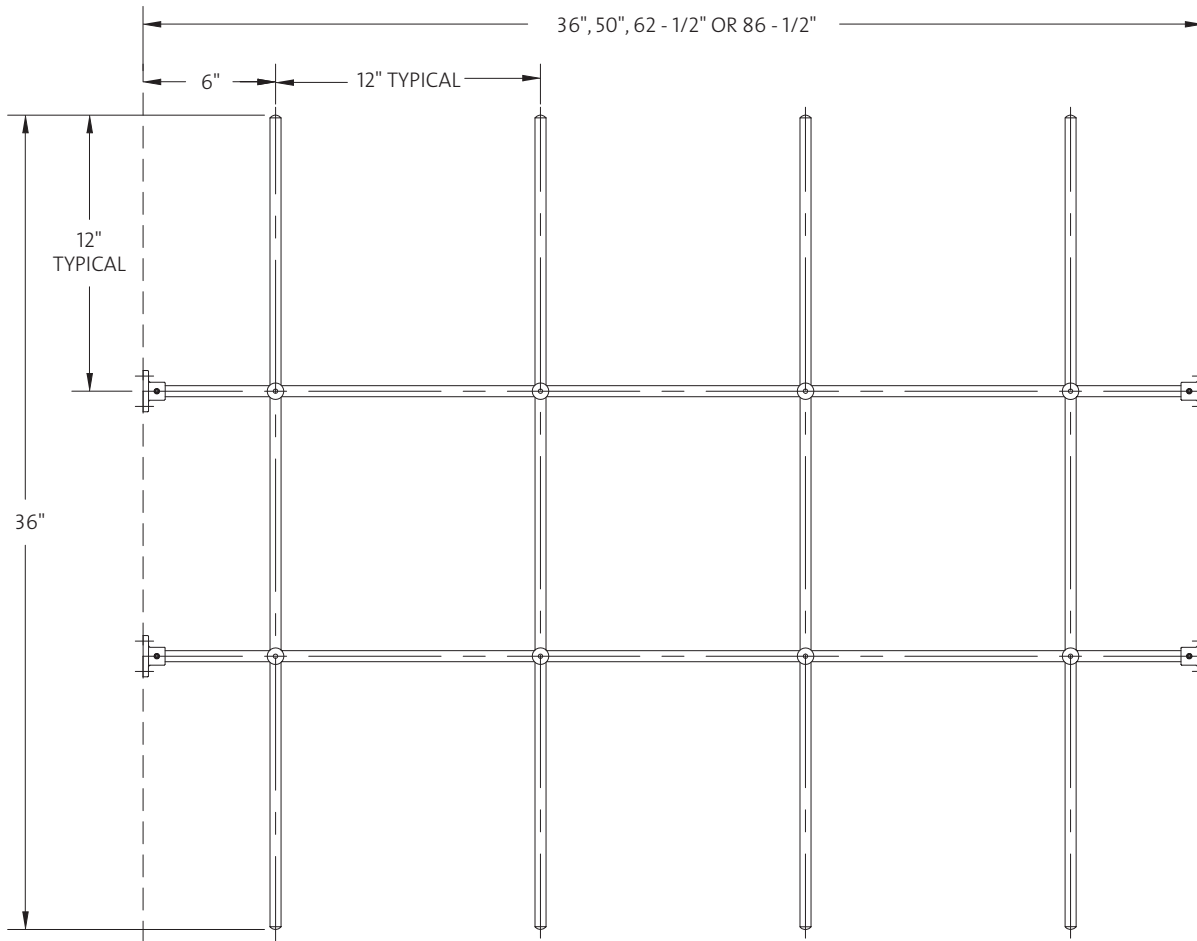
BILL OF MATERIALS		PAPA010 - 035 - 035 3'H x 3'W ASSEMBLY	PAPA010 - 035 - 046 3'H x 4'W ASSEMBLY	PAPA010 - 035 - 058 3'H x 5'W ASSEMBLY
PAP145 - 007	Tie Rod	2	2	2
PAP145 - 035 - 08	35 - 1/2" Vertical Rod (Outside)	2	2	2
PAP145 - 035	35" Vertical Rod (Inside)	2	3	4
PAP145 - 035	35" Horizontal Rod	4	—	—
PAP145 - 046	46" Horizontal Rod	—	4	—
PAP145 - 058	58" Horizontal Rod	—	—	4
PAP151	Adjustable Clamp (Closed Style)	2	2	2
PAP153	Adjustable Clamp (Half-Open Style)	16	20	24
PAP158	Adjustable Flange	4	4	4

NOTE:

1. BACKING PLATES FOR HOOD WALL AND MOUNTING SCREWS FOR FLANGES ARE NOT INCLUDED.

Measurements may vary $\pm 1/4"$.

○ PAP015 Plastic Lattice Rod Assemblies for Fume Hood, Wall Mounted



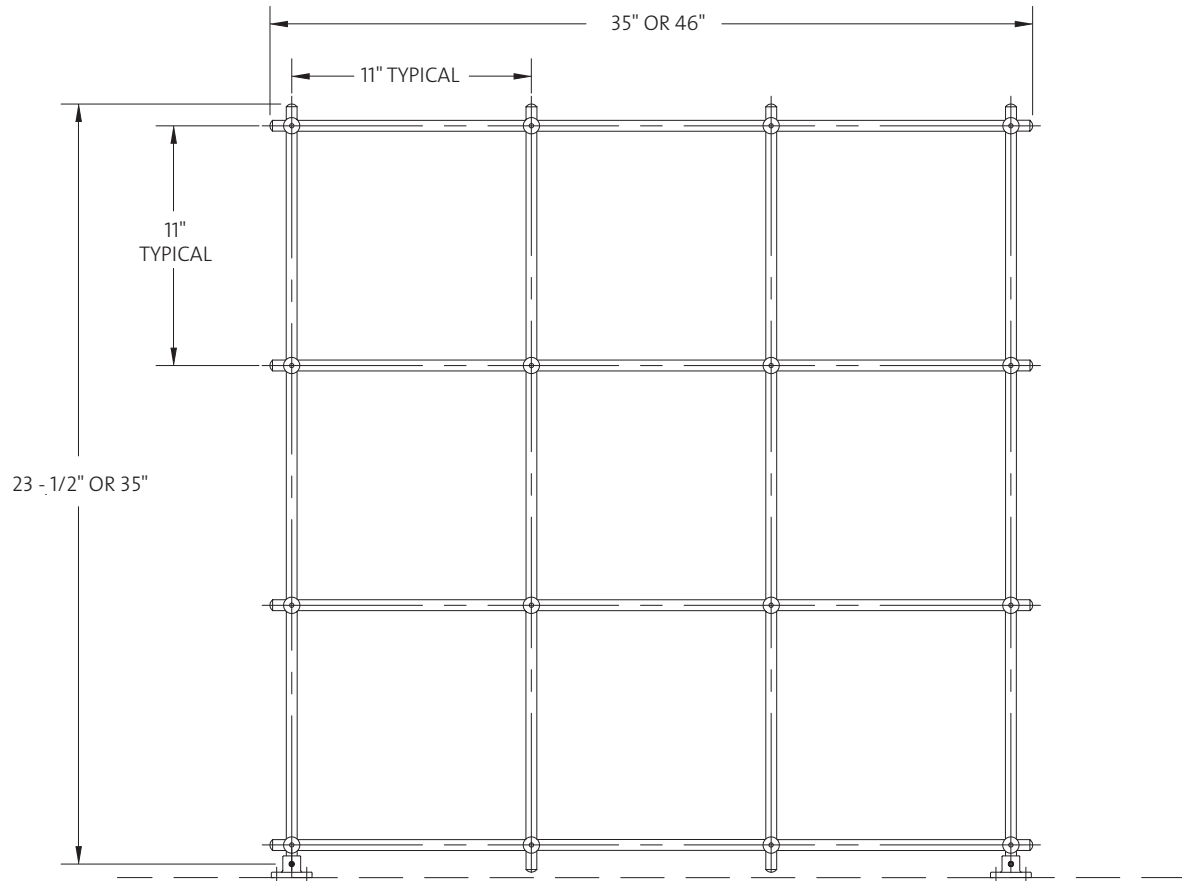
BILL OF MATERIALS		PAP015 - 036 - 036 3'H x 3'W ASSEMBLY	PAP015 - 036 - 050 3'H x 4'W ASSEMBLY	PAP015 - 036 - 062 3'H x 5'W ASSEMBLY	PAP015 - 036 - 086 3'H x 7'W ASSEMBLY
PAP145 - 036	36" Vertical Rod	3	4	5	7
PAP145 - 036	36" Horizontal Rod	2	-	-	-
PAP145 - 050	50" Horizontal Rod	-	2	-	-
PAP145 - 062 - 08	62 - 1/2" Horizontal Rod	-	-	2	-
PAP145 - 086 - 08	86 - 1/2" Horizontal Rod	-	-	-	2
PAP153	Adjustable Clamp (Half-Open Style)	6	8	10	14
PAP158	Adjustable Flange	4	4	4	4

NOTES:

- BACKING PLATES FOR HOOD WALL AND MOUNTING SCREWS FOR FLANGES ARE NOT INCLUDED.

Measurements may vary $\pm 1/4"$.

○ PAPA050 Plastic Lattice Rod Assemblies for Bench Mounting



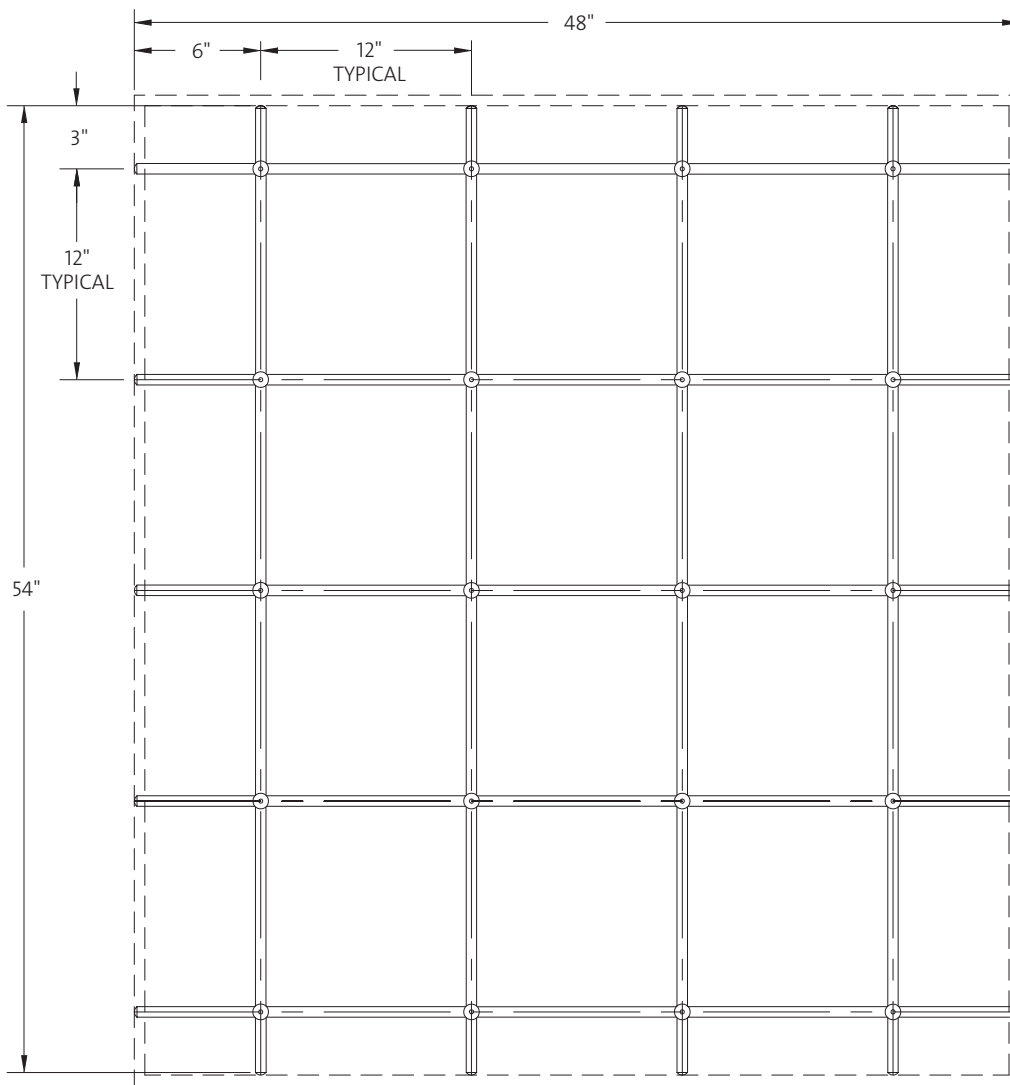
BILL OF MATERIALS		PAPA050 - 023 - 035 2'H x 3'W ASSEMBLY	PAPA050 - 023 - 046 2'H x 4'W ASSEMBLY	PAPA050 - 035 - 036 3'H x 3'W ASSEMBLY	PAPA050 - 035 - 046 3'H x 4'W ASSEMBLY
PAP145 - 024	24" Vertical Rod (Outside)	2	2	–	–
PAP145 - 035 - 08	35 - 1/2" Vertical Rod (Outside)	–	–	2	2
PAP145 - 023	23" Vertical Rod (Inside)	2	3	–	–
PAP145 - 035	35" Vertical Rod (Inside)	–	–	2	3
PAP145 - 036	35" Horizontal Rod	3	–	4	–
PAP145 - 046	46" Horizontal Rod	–	3	–	4
PAP153	Adjustable Clamp (Half-Open Style)	12	15	16	20
PAP158	Adjustable Flange	2	2	2	2

NOTE:

1. BACKING PLATES FOR HOOD WALL AND MOUNTING SCREWS FOR FLANGES ARE NOT INCLUDED.

Measurements may vary $\pm 1/4"$.

○ PAP062 Plastic Lattice Rod Assemblies for Wall Mounting



BILL OF MATERIALS		PAP062 - 054 - 048 4 - 1/2'H x 4'W ASSEMBLY
PAP145 - 054	54" Vertical Rod	4
PAP145 - 048	48" Horizontal Rod	5
PAP153	Adjustable Clamp (Half-Open Style)	20

NOTES:

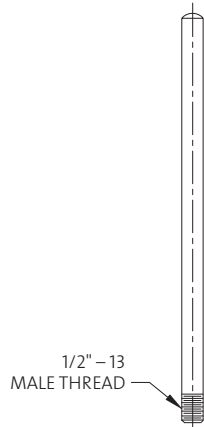
1. BACKING PLATES FOR HOOD WALL AND MOUNTING SCREWS FOR FLANGES ARE NOT INCLUDED.

Measurements may vary $\pm 1/4"$.

1/2" Stainless Steel Lattice Rod Components

SAP125-XXX

1/2" Diameter Stainless Steel Lattice Rod with Threaded End for Vertical Mounting

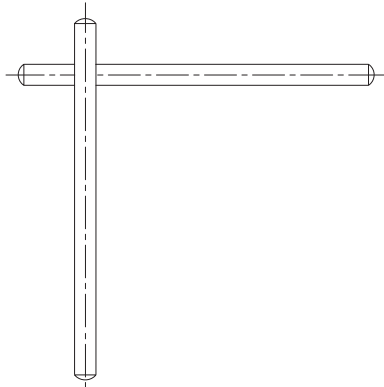


MODEL NO.	LENGTH
SAP125-006	6"
SAP125-007	7"
SAP125-008	8"
SAP125-010	10"
SAP125-012	12"
SAP125-018	18"
SAP125-024	24"
SAP125-030	30"

MODEL NO.	LENGTH
SAP125-036	36"
SAP125-036-08	36 1/2"
SAP125-042	42"
SAP125-048	48"
SAP125-060	60"
SAP125-066	66"
SAP125-072	72"

SAP145-XXX

1/2" Diameter Stainless Steel Lattice Rod for Vertical or Horizontal Mounting



MODEL NO.	LENGTH
SAP145-006	6"
SAP145-007	7"
SAP145-008	8"
SAP145-010	10"
SAP145-012	12"
SAP145-016	16"
SAP145-018	18"
SAP145-024	24"
SAP145-030	30"
SAP145-035	35"
SAP145-035-08	35 1/2"
SAP145-036	36"
SAP145-036-08	36 1/2"
SAP145-038	38"

MODEL NO.	LENGTH
SAP145-040	40"
SAP145-042	42"
SAP145-046	46"
SAP145-048	48"
SAP145-054	54"
SAP145-060	60"
SAP145-062	62"
SAP145-066	66"
SAP145-072	72"
SAP145-084	84"
SAP145-086-08	86 1/2"
SAP145-096	96"
SAP145-110	110"

NOTE:

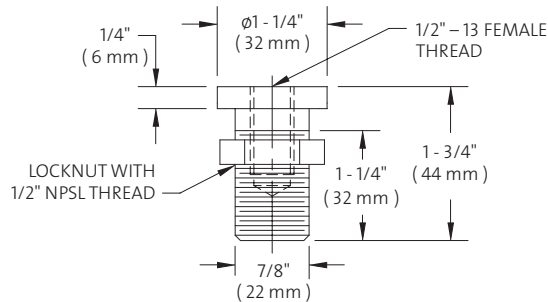
1. STAINLESS STEEL LATTICE ROD COMPONENTS ARE TYPE 316 STAINLESS STEEL AND ARE FURNISHED WITH A SATIN (BRUSHED) FINISH.

Measurements may vary $\pm 1/4$ ".

1/2" Stainless Steel Lattice Rod Components

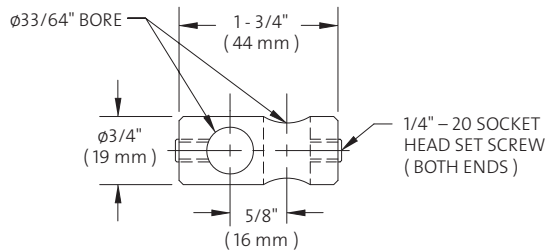
SAP100

Stainless Steel Flange for Recessed Mounting



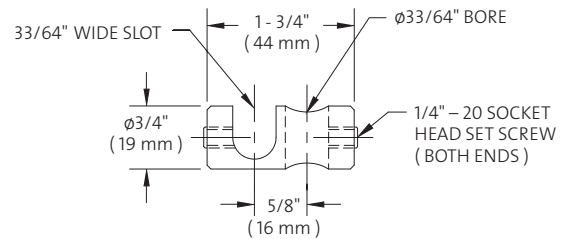
SAP151

1/2" Stainless Steel Adjustable Clamp, Closed Style



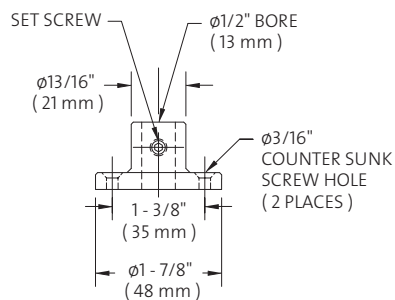
SAP153

1/2" Stainless Steel Adjustable Clamp, Half-Open Style



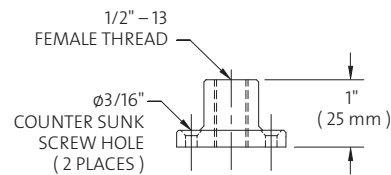
SAP158

Stainless Steel Adjustable Flange with Set Screw



SAP158A

Stainless Steel Threaded Flange

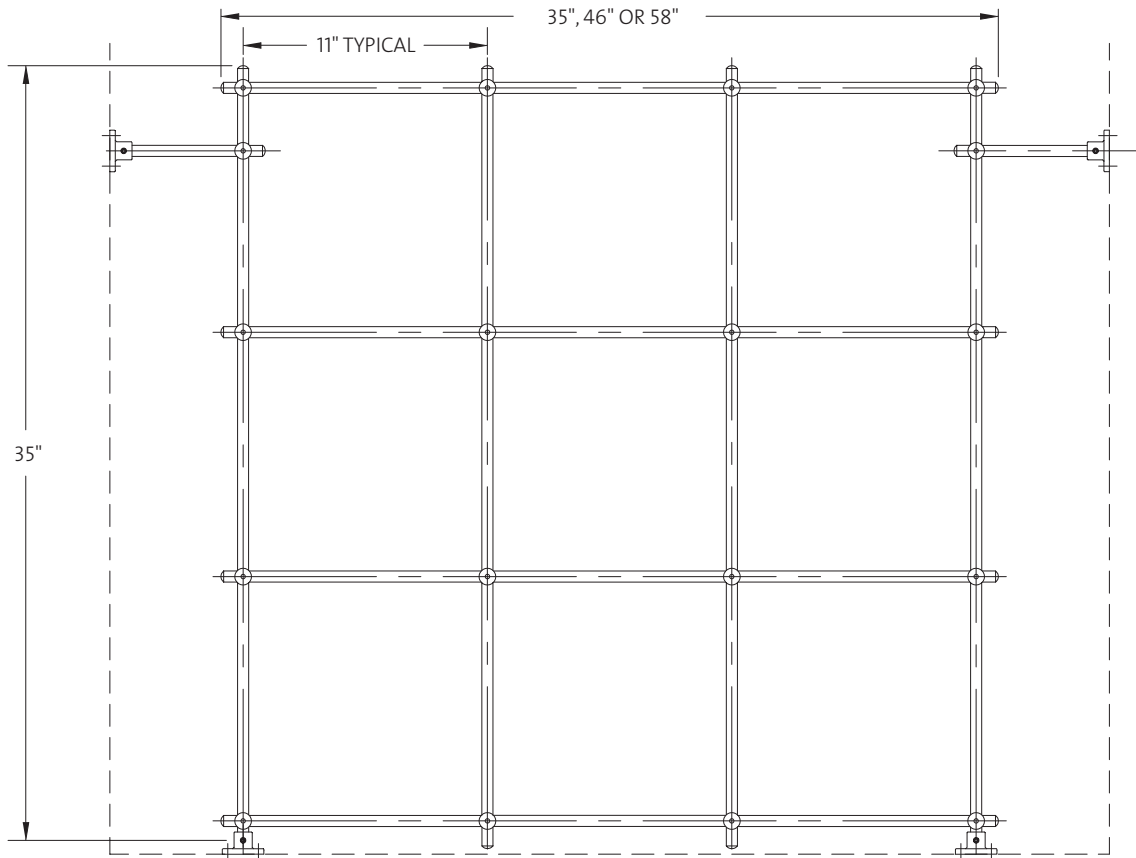


NOTES:

1. STAINLESS STEEL LATTICE ROD COMPONENTS ARE TYPE 316 STAINLESS STEEL AND ARE FURNISHED WITH A SATIN (BRUSHED) FINISH.
2. HALF-OPEN STYLE CLAMPS FACILITATE ADDING OR REMOVING RODS TO EXISTING ASSEMBLY.

Measurements may vary $\pm 1/4$ ".

○ SAP010 Stainless Steel Lattice Rod Assemblies for Fume Hood, Deck Mounted



BILL OF MATERIALS		SAP010 - 035 - 035 3'H x 3'W ASSEMBLY	SAP010 - 035 - 046 3'H x 4'W ASSEMBLY	SAP010 - 035 - 058 3'H x 5'W ASSEMBLY
SAP145 - 007	Tie Rod	2	2	2
SAP145 - 035 - 08	35 - 1/2" Vertical Rod (Outside)	2	2	2
SAP145 - 035	35" Vertical Rod (Inside)	2	3	4
SAP145 - 035	35" Horizontal Rod	4	-	-
SAP145 - 046	46" Horizontal Rod	-	4	-
SAP145 - 058	58" Horizontal Rod	-	-	4
SAP151	Adjustable Clamp (Closed Style)	2	2	2
SAP153	Adjustable Clamp (Half-Open Style)	16	20	24
SAP158	Adjustable Flange	4	4	4

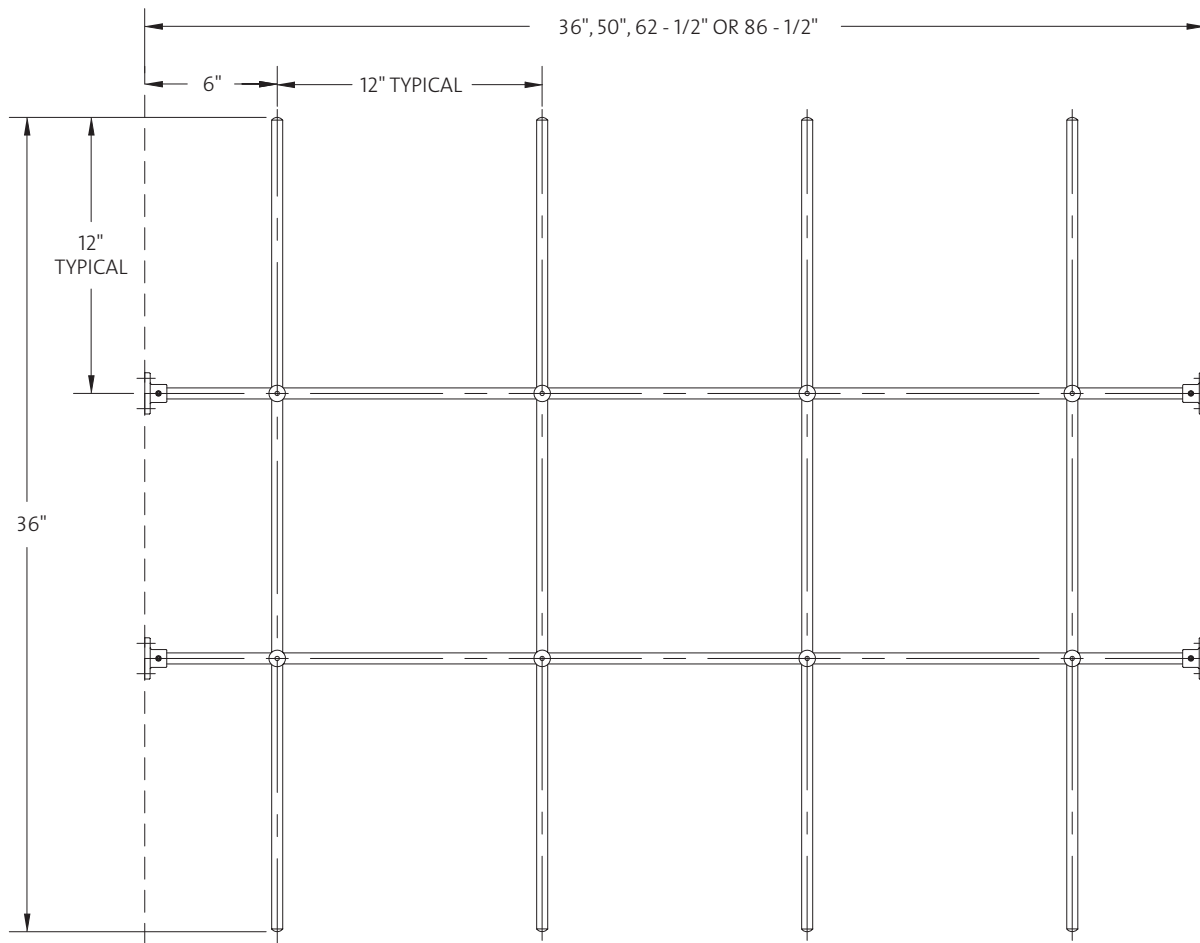
NOTES:

1. STAINLESS STEEL LATTICE ROD COMPONENTS ARE TYPE 316 STAINLESS STEEL AND ARE FURNISHED WITH A SATIN (BRUSHED) FINISH.
2. BACKING PLATES FOR HOOD WALL AND MOUNTING SCREWS FOR FLANGES ARE NOT INCLUDED.

Measurements may vary $\pm 1/4$ ".



○ SAP015 Stainless Steel Lattice Rod Assemblies for Fume Hood, Wall Mounted



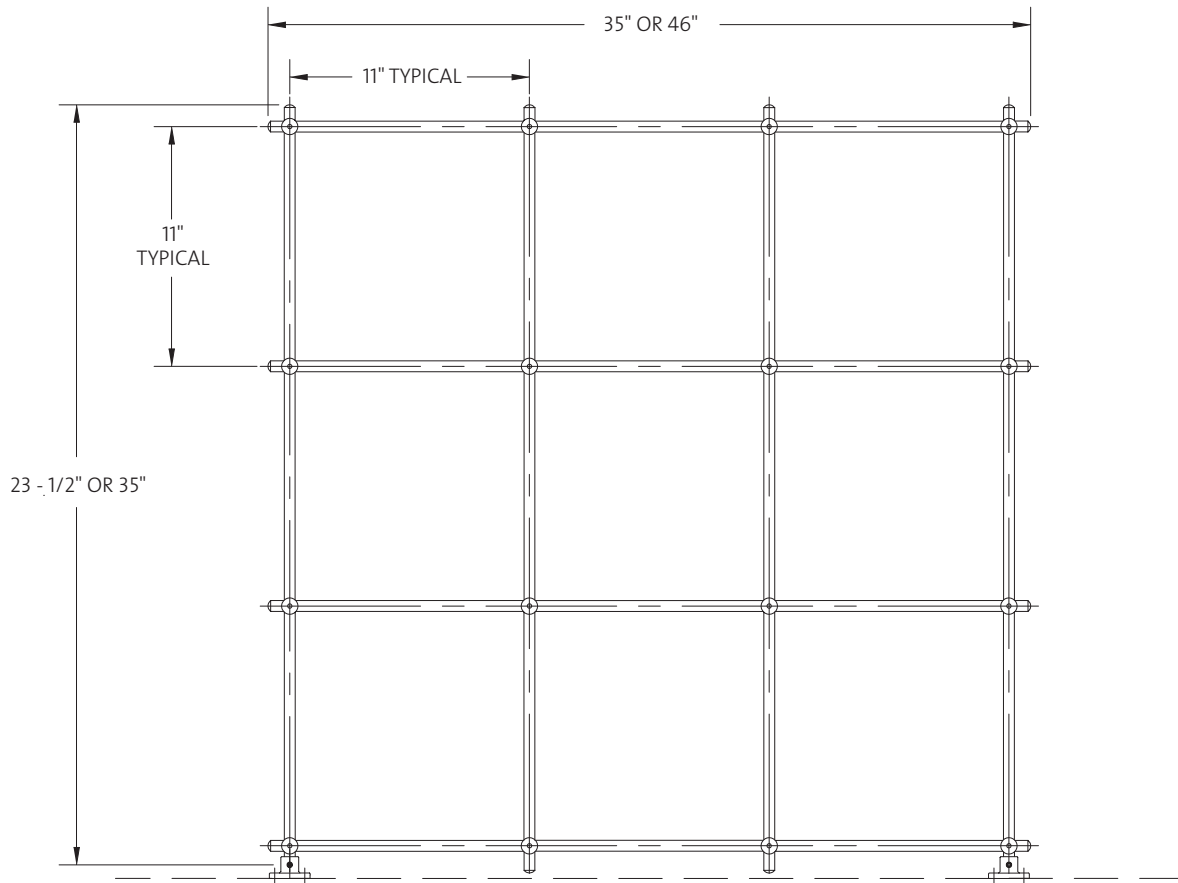
BILL OF MATERIALS		SAP015 - 036 - 036 3'H x 3'W ASSEMBLY	SAP015 - 036 - 050 3'H x 4'W ASSEMBLY	SAP015 - 036 - 062 3'H x 5'W ASSEMBLY	SAP015 - 036 - 086 3'H x 7'W ASSEMBLY
SAP145 - 036	36" Vertical Rod	3	4	5	7
SAP145 - 036	36" Horizontal Rod	2	-	-	-
SAP145 - 050	50" Horizontal Rod	-	2	-	-
SAP145 - 062 - 08	62 - 1/2" Horizontal Rod	-	-	2	-
SAP145 - 086 - 08	86 - 1/2" Horizontal Rod	-	-	-	2
SAP153	Adjustable Clamp (Half-Open Style)	6	8	10	14
SAP158	Adjustable Flange	4	4	4	4

NOTES:

1. STAINLESS STEEL LATTICE ROD COMPONENTS ARE TYPE 316 STAINLESS STEEL AND ARE FURNISHED WITH A SATIN (BRUSHED) FINISH.
2. BACKING PLATES FOR HOOD WALL AND MOUNTING SCREWS FOR FLANGES ARE NOT INCLUDED.

Measurements may vary $\pm 1/4$ ".

○ SAP050 Stainless Steel Lattice Rod Assemblies for Bench Mounting



BILL OF MATERIALS		SAP050 - 023 - 035 2'H x 3'W ASSEMBLY	SAP050 - 023 - 046 2'H x 4'W ASSEMBLY	SAP050 - 035 - 036 3'H x 3'W ASSEMBLY	SAP050 - 035 - 046 3'H x 4'W ASSEMBLY
SAP145 - 024	24" Vertical Rod (Outside)	2	2	–	–
SAP145 - 035 - 08	35 - 1/2" Vertical Rod (Outside)	–	–	2	2
SAP145 - 023	23" Vertical Rod (Inside)	2	3	–	–
SAP145 - 035	35" Vertical Rod (Inside)	–	–	2	3
SAP145 - 036	35" Horizontal Rod	3	–	4	–
SAP145 - 046	46" Horizontal Rod	–	3	–	4
SAP153	Adjustable Clamp (Half-Open Style)	12	15	16	20
SAP158	Adjustable Flange	2	2	2	2

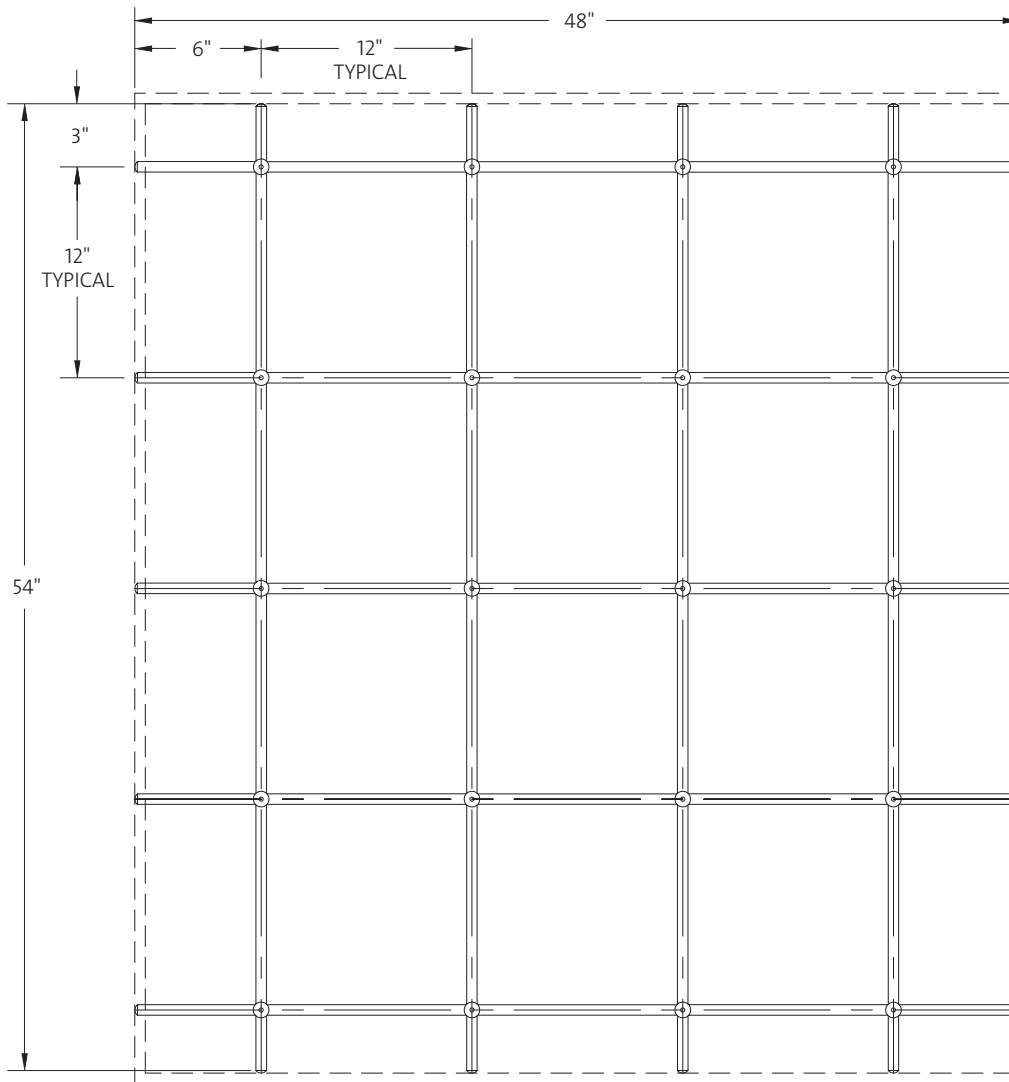
NOTES:

1. STAINLESS STEEL LATTICE ROD COMPONENTS ARE TYPE 316 STAINLESS STEEL AND ARE FURNISHED WITH A SATIN (BRUSHED) FINISH.
2. BACKING PLATES FOR HOOD WALL AND MOUNTING SCREWS FOR FLANGES ARE NOT INCLUDED.

Measurements may vary $\pm 1/4$ ".



○ SAP062 Stainless Steel Lattice Rod Assembly for Wall Mounting



BILL OF MATERIALS		SAP062 - 054 - 048 4 - 1/2'H x 4'W ASSEMBLY
SAP145 - 054	54" Vertical Rod	4
SAP145 - 048	48" Horizontal Rod	5
SAP153	Adjustable Clamp (Half-Open Style)	20

NOTES:

1. STAINLESS STEEL LATTICE ROD COMPONENTS ARE TYPE 316 STAINLESS STEEL AND ARE FURNISHED WITH A SATIN (BRUSHED) FINISH.
2. BACKING PLATES FOR HOOD WALL AND MOUNTING SCREWS FOR FLANGES ARE NOT INCLUDED.

Measurements may vary $\pm 1/4$ ".