

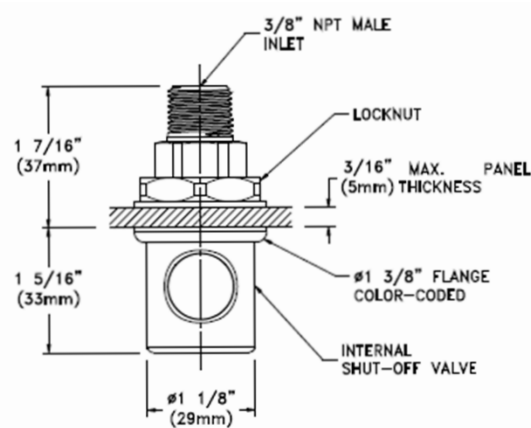
WSF PLUMBING KIT SKUs GUIDE (ALL WSF CUTSHEETS ATTACHED)

DRAWN BY : MOHIT KAMAT

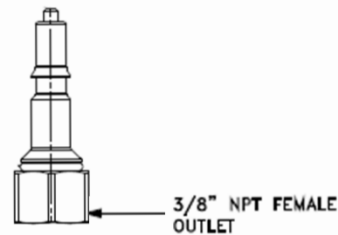
DATE : 05/20/2021

COMPONENTS NEEDED TO COMPLETE ASSEMBLY

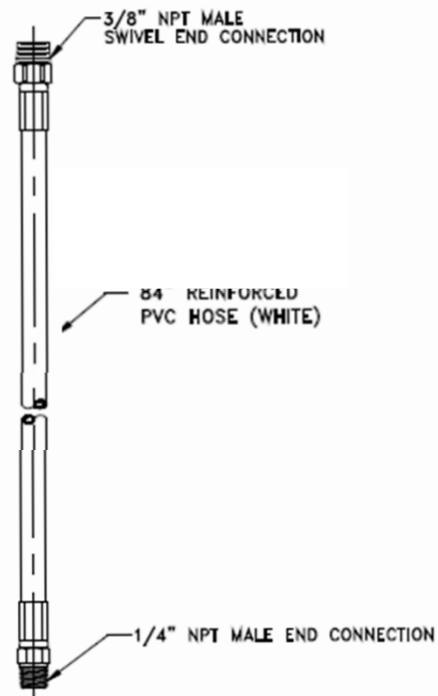
QUICK CONNECT BODY Part of Kit



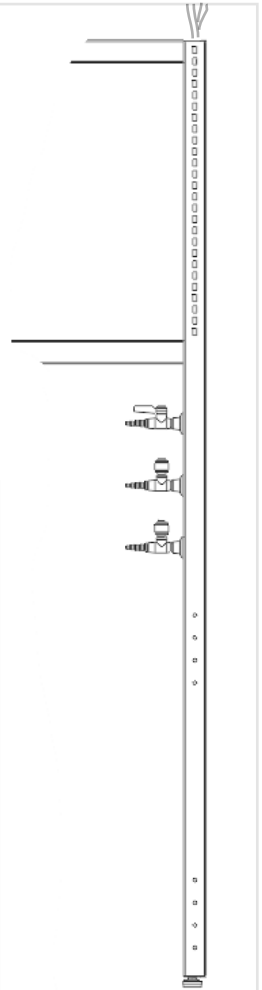
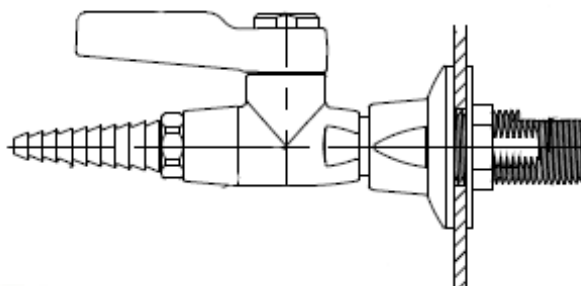
QUICK CONNECT PLUG Part of Kit



HOSE Not part of the Kit Quote Separately



VALVE Part of Kit

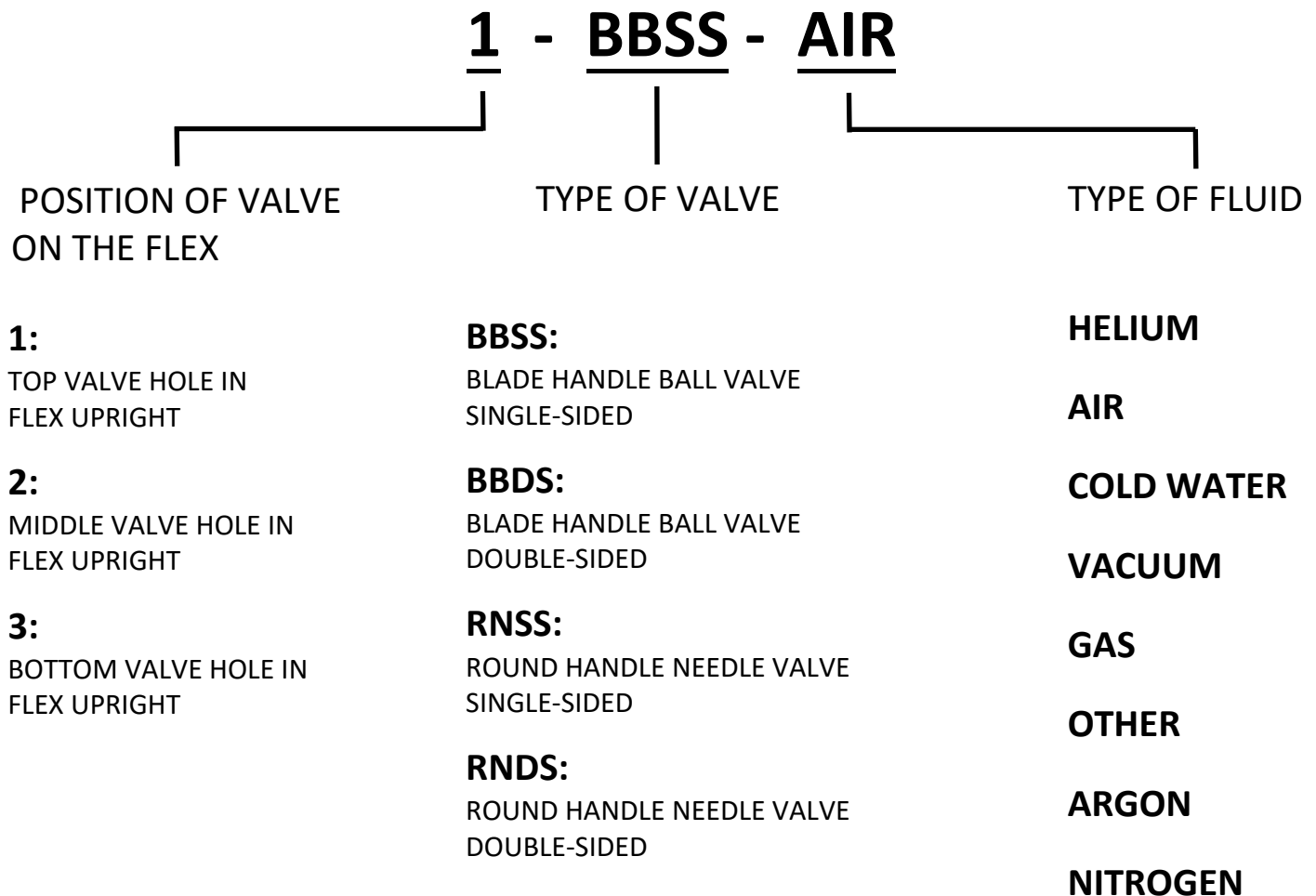


FLEX UPRIGHT WITH VALVES

WSF PLUMBING KIT SKUs GUIDE (ALL WSF CUTSHEETS ATTACHED)

DRAWN BY : MOHIT KAMAT
DATE : 05/20/2021

Step 1: Plumbing Kit SKU Selection



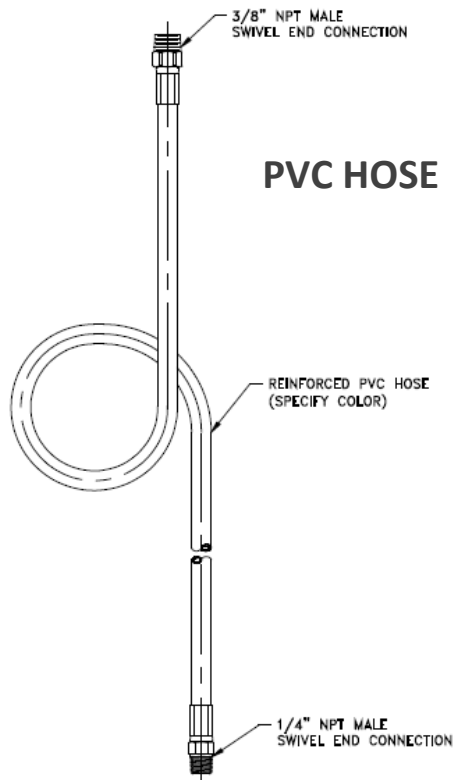
**Refer page 5 to learn about
our standard valves**

**NOTE: If the fluids are unknown, quote with AIR as the fluid.
Change the fluid once it is known.**

WSF PLUMBING KIT SKUs GUIDE (ALL WSF CUTSHEETS ATTACHED)

DRAWN BY : MOHIT KAMAT
DATE : 05/20/2021

Step 2: Hose Selection



HPV2 - **XXX** - 3M2M - **X**

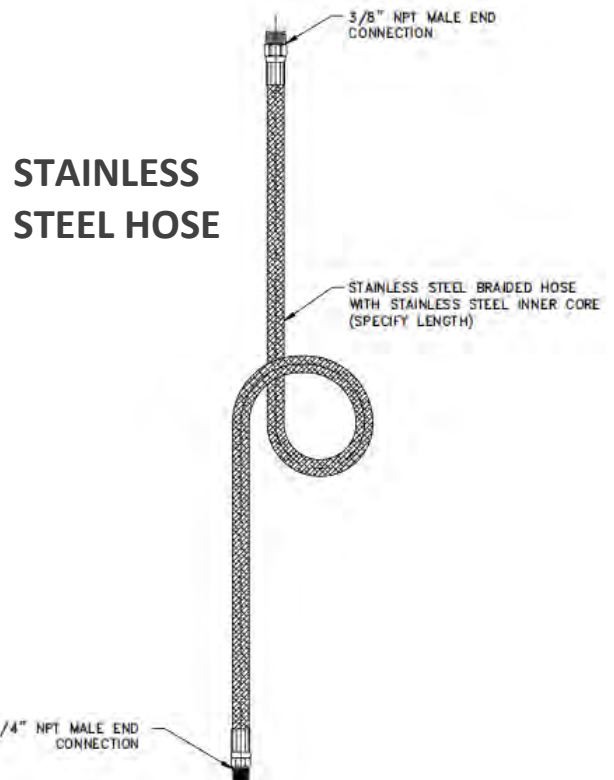
***XXX** : SPECIFY HOSE LENGTH
084 : 84"
096 : 96"

X : CHOOSE COLOR CODE

MATCH COLOR OF THE FLUID. IF FLUID COLOR IS NOT AVAILABLE CHOOSE WHITE.

| COLOR CODE | |
|------------|--------|
| -1 | BLACK |
| -2 | ORANGE |
| -4 | YELLOW |
| -6 | WHITE |
| -8 | BROWN |
| -9 | CLEAR |

NOTE: Do not use PVC hose if fluid is GAS. Choose stainless steel hose.



HSSS - **XXX** - 3M2M

***XXX** : SPECIFY HOSE LENGTH
084 : 84"
096 : 96"

*** XXX** IS THE LENGTH OF HOSE IN INCHES.
HOSE LENGTH DEPENDS ON CEILING HEIGHT AND LOCATION OF CEILING CONNECTIONS WRT THE FLEX UPRIGHT.
108" CEILING = 84" HOSE
120" CEILING = 96" HOSE

WSF PLUMBING KIT SKUs GUIDE (ALL WSF CUTSHEETS ATTACHED)

DRAWN BY : MOHIT KAMAT
DATE : 05/20/2021

Example Assemblies:

Ex 1: 1 x SINGLE-SIDED FLEX

a) 10' CEILING

b) FLUIDS

i) POSITION 1 : COLD WATER (BALL VALVE)

ii) POSITION 2 : VACUUM (BALL VALVE)

1 x 1-BBSS-COLD WATER

1 x 2-BBSS-VACUUM

1 x HPV2-096-3M2M-3

1 x HPV2-096-3M2M-4

Ex 2: 1 x DOUBLE-SIDED FLEX

a) 9' CEILING

b) FLUIDS

i) POSITION 3 : GAS (NEEDLE VALVE)

1 x 3-RNDS-GAS

1 x HSSS-084-3M2M

Ex 3: SO 20668 INTREPID BUILD

a) 10' CEILING

b) 3 x SINGLE-SIDED FLEXes

c) 3 x DOUBLE-SIDED FLEXes

d) FLUIDS

i) POSITION 1: AIR (BALL VALVE)

ii) POSITION 2: VACUUM (BALL VALVE)

3 x 1-BBSS-AIR

3 x 2-BBSS-VACUUM

3 x 1-BBDS-AIR

3 x 2-BBDS-VACUUM

6 x HPV2-096-3M2M-2

6 x HPV2-096-3M2M-4

WSF PLUMBING KIT SKUs GUIDE (ALL WSF CUTSHEETS ATTACHED)

DRAWN BY : MOHIT KAMAT

DATE : 05/20/2021

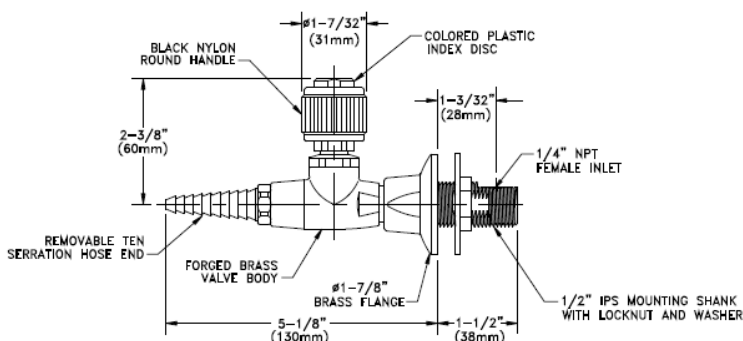
The following valves are standard valves. Refer next page to quote components for non-standard valve assemblies.

NEEDLE VALVES

INV010-16-14BV-158

Furnished with BI637-01-14R

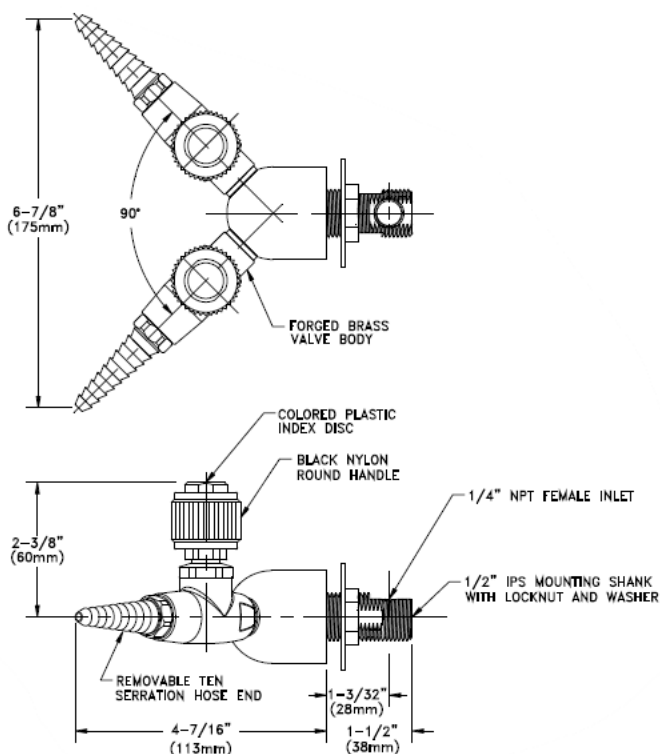
USED WITH SINGLE-SIDED FLEX



INV010-16-14BV-141

Furnished with BI637-02-04R

USED WITH DOUBLE-SIDED FLEX

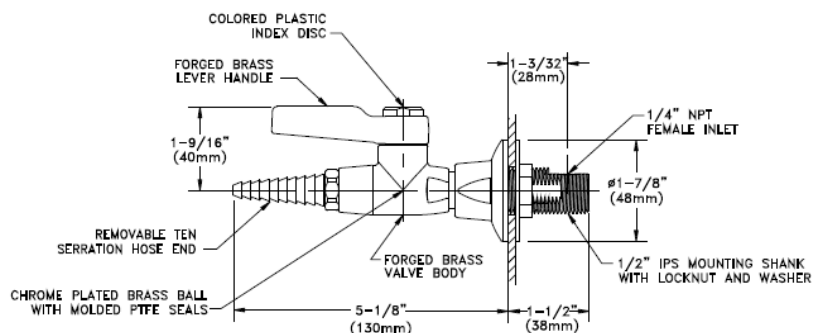


BALL VALVES

L4200-158

Furnished with BI637-01-14R

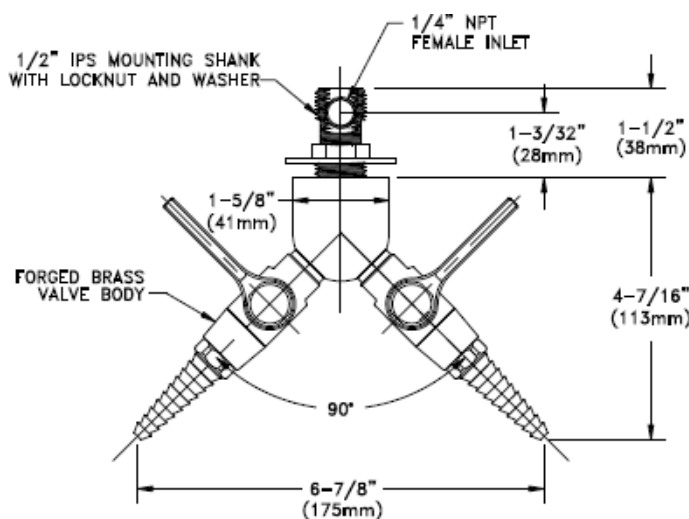
USED WITH SINGLE-SIDED FLEX



L4200-141

Furnished with BI637-02-04R

USED WITH DOBLE-SIDED FLEX



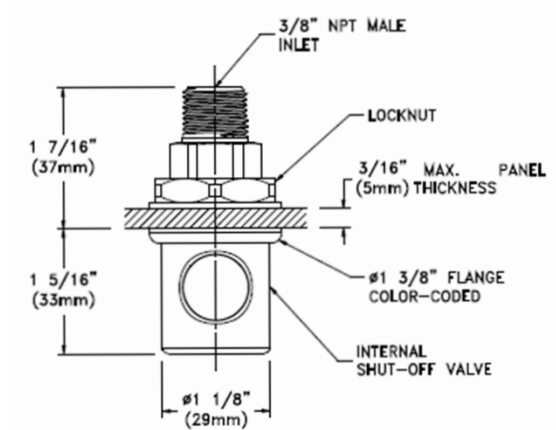
NON-STANDARD VALVE COMPONENTS (ALL WSF CUTSHEETS ATTACHED)

DRAWN BY : MOHIT KAMAT
DATE : 05/20/2021

QUICK CONNECT BODY

QPFL-B-3M-K_

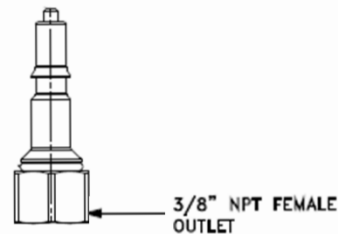
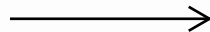
3/8" NPT MALE INLET
CONNECTS TO PLUMBING IN
THE CEILING PANEL



QUICK CONNECT PLUG

QPDL-B-3F-K_

3/8" NPT FEMALE OUTLET
CONNECTS TO HOSE



PVC HOSE

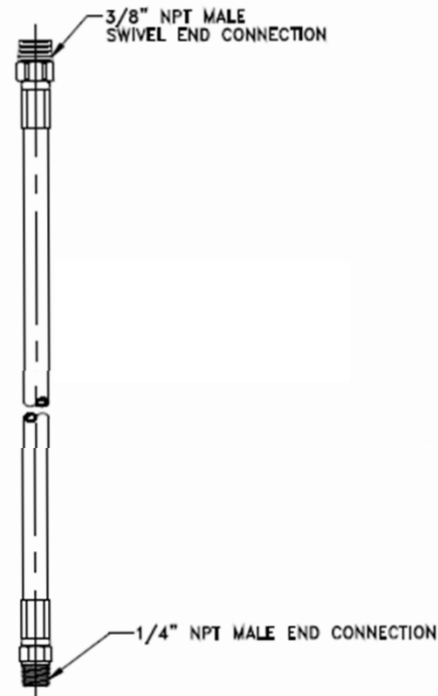
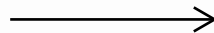
HPV2-XXX-3M2M-X

OR

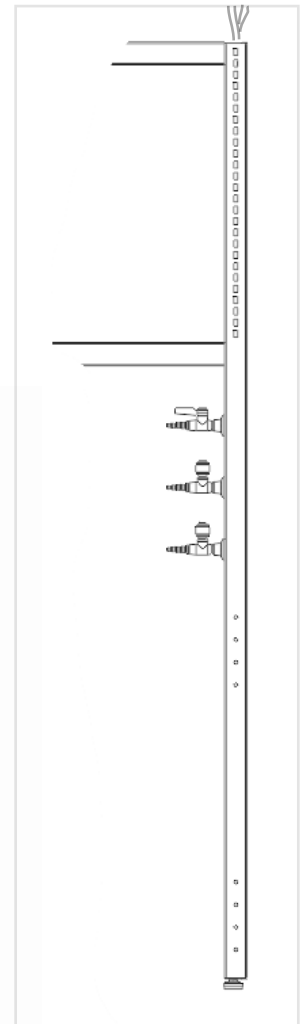
SS HOSE

HSSS-XXX-3M2M

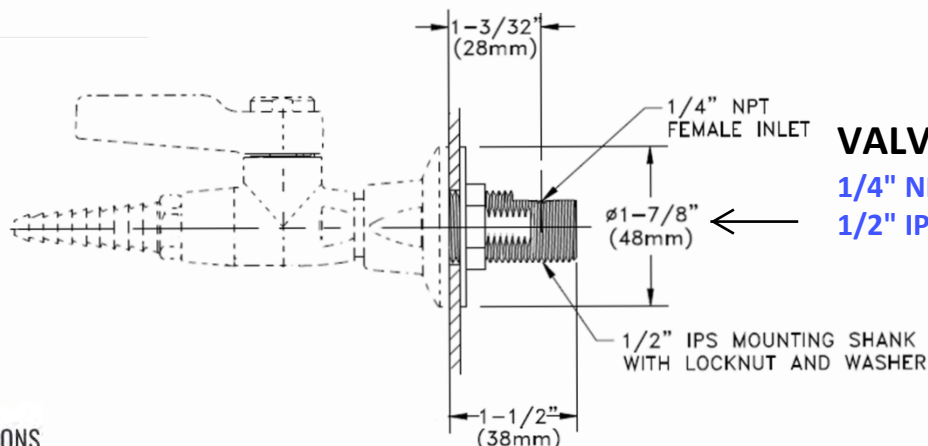
3/8" NPT MALE CONNETS TO
QUICK CONNECT BODY AND
1/4" NPT MALE CONNECTS
TO VALVE INLET



"XXX" IS THE LENGTH OF HOSE IN
INCHES
HOSE LENGTH DEPENDS ON
CEILING HEIGHT AND LOCATION OF
CEILING CONNECTIONS WRT THE
FLEX UPRIGHT.



FLEX UPRIGHT
WITH VALVES



VALVE NEEDS TO HAVE
1/4" NPT FEMALE INLET
1/2" IPS MOUNTING SHANK

NON-STANDARD VALVE COMPONENTS (ALL WSF CUTSHEETS ATTACHED)

DRAWN BY : MOHIT KAMAT

DATE : 05/20/2021

- 1) USE THE COLOR KEY GUIDE BELOW WHILE ORDERING **QPFL-B-3M-K_** AND **QPDL-B-3F-K_**.
- 2) THE FLUID FOR THE VALVES NEED TO BE MENTIONED IN PO TO HAVE THE VALVES MADE WITH CORRECT COLOR INDEX DISCS.

COLOR KEY GUIDE FOR FLUIDS

| | |
|---------------------|--|
| K1 - BLACK | - HELIUM |
| K2 - ORANGE | - AIR |
| K3 - GREEN | - COLD WATER / WATER / H₂O |
| K4 - YELLOW | - VACUUM |
| K5 - BLUE | - GAS |
| K6 - WHITE | - OTHER |
| K7 - VIOLETT | - ARGON (SHOWN AS PURPLE SOMETIMES) |
| K8 - BROWN | - NITROGEN |



WaterSaver

INNOVATIVE PRODUCTS FOR RESEARCH

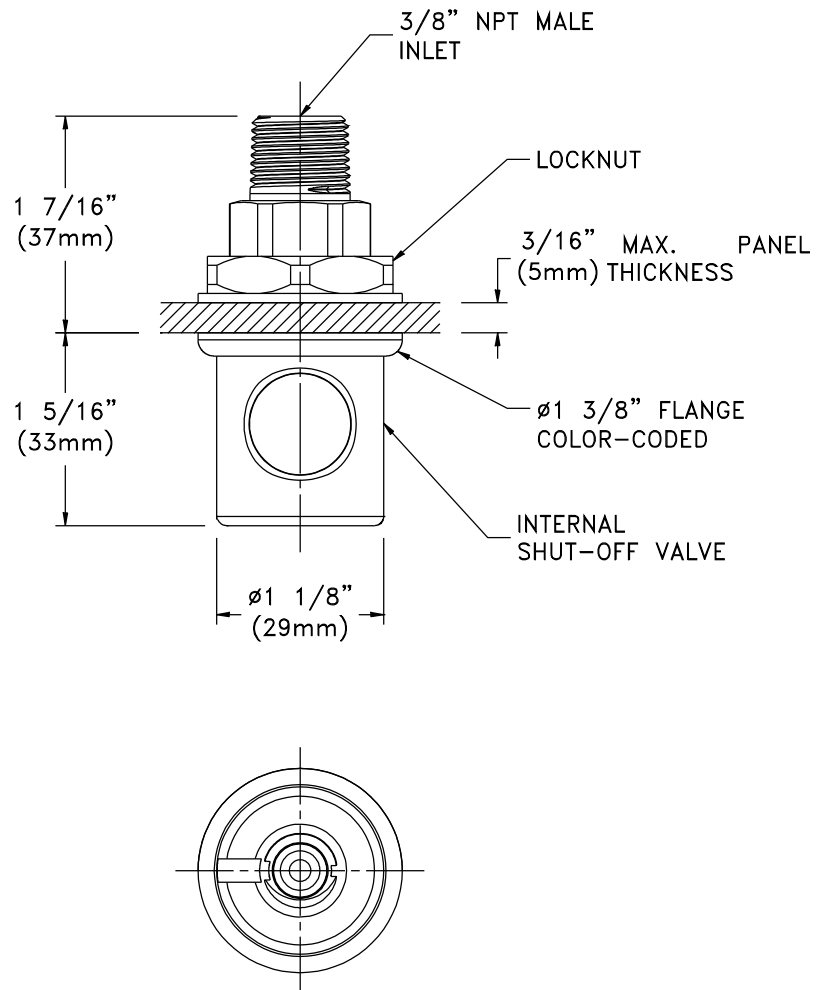
WaterSaver Faucet
701 W Erie St
Chicago, IL 60654

312 666 5500 TELEPHONE
312 666 5501 FACSIMILE
wsflab.com

QPFL-B-3M-K_

KEYED QUICK CONNECT, PUSH BUTTON BODY, PANEL MOUNTED, BRASS, 3/8" NPT MALE INLET, LOCKING

| | |
|---------------|-------------|
| QPFL-B-3M-K1 | BLACK |
| QPFL-B-3M-K2 | ORANGE |
| QPFL-B-3M-K3 | GREEN |
| QPFL-B-3M-K4 | YELLOW |
| QPFL-B-3M-K5 | BLUE |
| QPFL-B-3M-K6 | WHITE |
| QPFL-B-3M-K7 | VIOLET |
| QPFL-B-3M-K8 | BROWN |
| QPFL-B-3M-K9 | GRAY |
| QPFL-B-3M-K10 | DARK GRAY |
| QPFL-B-3M-K11 | LIGHT BLUE |
| QPFL-B-3M-K12 | LIGHT GREEN |
| QPFL-B-3M-K13 | TAN |
| QPFL-B-3M-K14 | PINK |
| QPFL-B-3M-K15 | RED |



NOTES:

1. PROVIDE $\phi 1-1/8$ " MOUNTING HOLE.
2. FITTING IS FURNISHED WITH A POLISHED CHROME PLATED FINISH.

MEASUREMENTS MAY VARY $\pm 1/4$ " (6mm).

Drawing Number: _____

Revision Number: 081115-ALG



WaterSaver

INNOVATIVE PRODUCTS FOR RESEARCH

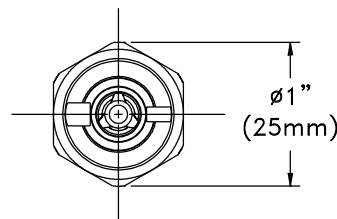
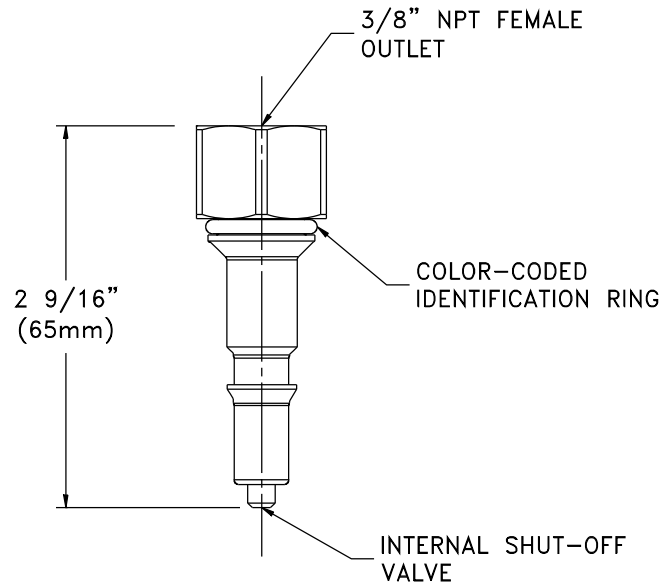
WaterSaver Faucet
701 W Erie St
Chicago, IL 60654

312 666 5500 TELEPHONE
312 666 5501 FACSIMILE
wsflab.com

QPDL-B-3F-K_

KEYED QUICK CONNECT, PUSH BUTTON PLUG, BRASS, 3/8" NPT FEMALE OUTLET, LOCKING

| | |
|---------------|-------------|
| QPDL-B-3F-K1 | BLACK |
| QPDL-B-3F-K2 | ORANGE |
| QPDL-B-3F-K3 | GREEN |
| QPDL-B-3F-K4 | YELLOW |
| QPDL-B-3F-K5 | BLUE |
| QPDL-B-3F-K6 | WHITE |
| QPDL-B-3F-K7 | PURPLE |
| QPDL-B-3F-K8 | BROWN |
| QPDL-B-3F-K9 | GRAY |
| QPDL-B-3F-K10 | DARK GRAY |
| QPDL-B-3F-K11 | LIGHT BLUE |
| QPDL-B-3F-K12 | LIGHT GREEN |
| QPDL-B-3F-K13 | TAN |
| QPDL-B-3F-K14 | PINK |
| QPDL-B-3F-K15 | RED |



NOTE:

1. FITTING IS FURNISHED WITH A POLISHED CHROME PLATED FINISH

MEASUREMENTS MAY VARY $\pm 1/4"$ (6mm).

Drawing Number: _____

Revision Number: 081115-ALG



WaterSaver

INNOVATIVE PRODUCTS FOR RESEARCH

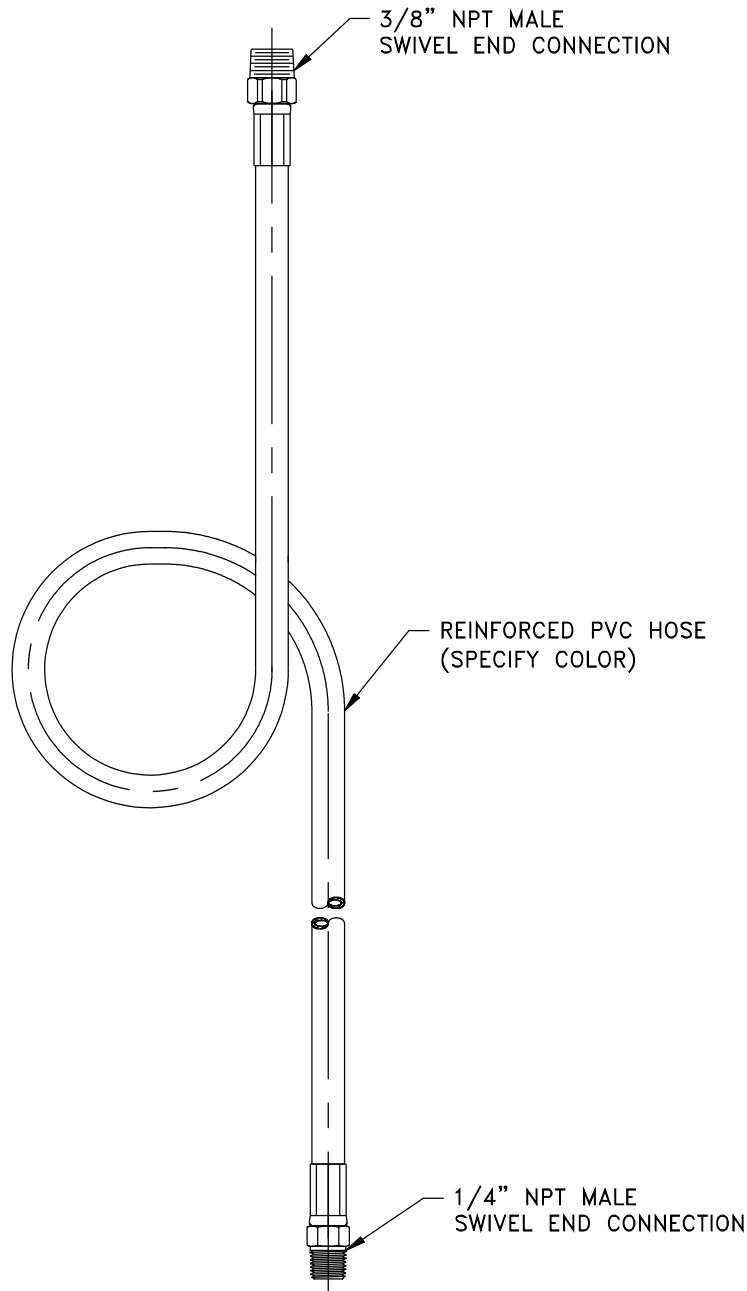
WaterSaver Faucet
701 W Erie St
Chicago, IL 60654

312 666 5500 TELEPHONE
312 666 5501 FACSIMILE
wsflab.com

HPV2-XXX-3M2M-X

REINFORCED PVC HOSE (1/4" I.D.), 1/4" NPT MALE X 3/8" NPT MALE END CONNECTIONS
(SPECIFY LENGTH)

| COLOR CODE | |
|------------|--------|
| -1 | BLACK |
| -2 | ORANGE |
| -4 | YELLOW |
| -6 | WHITE |
| -8 | BROWN |
| -9 | CLEAR |



NOTES:

1. FITTINGS ARE FURNISHED WITH A POLISHED CHROME PLATED FINISH

MEASUREMENTS MAY VARY $\pm 1/4"$ (6mm).

Drawing Number: _____

Revision Number: 082820-SCJ



WaterSaver

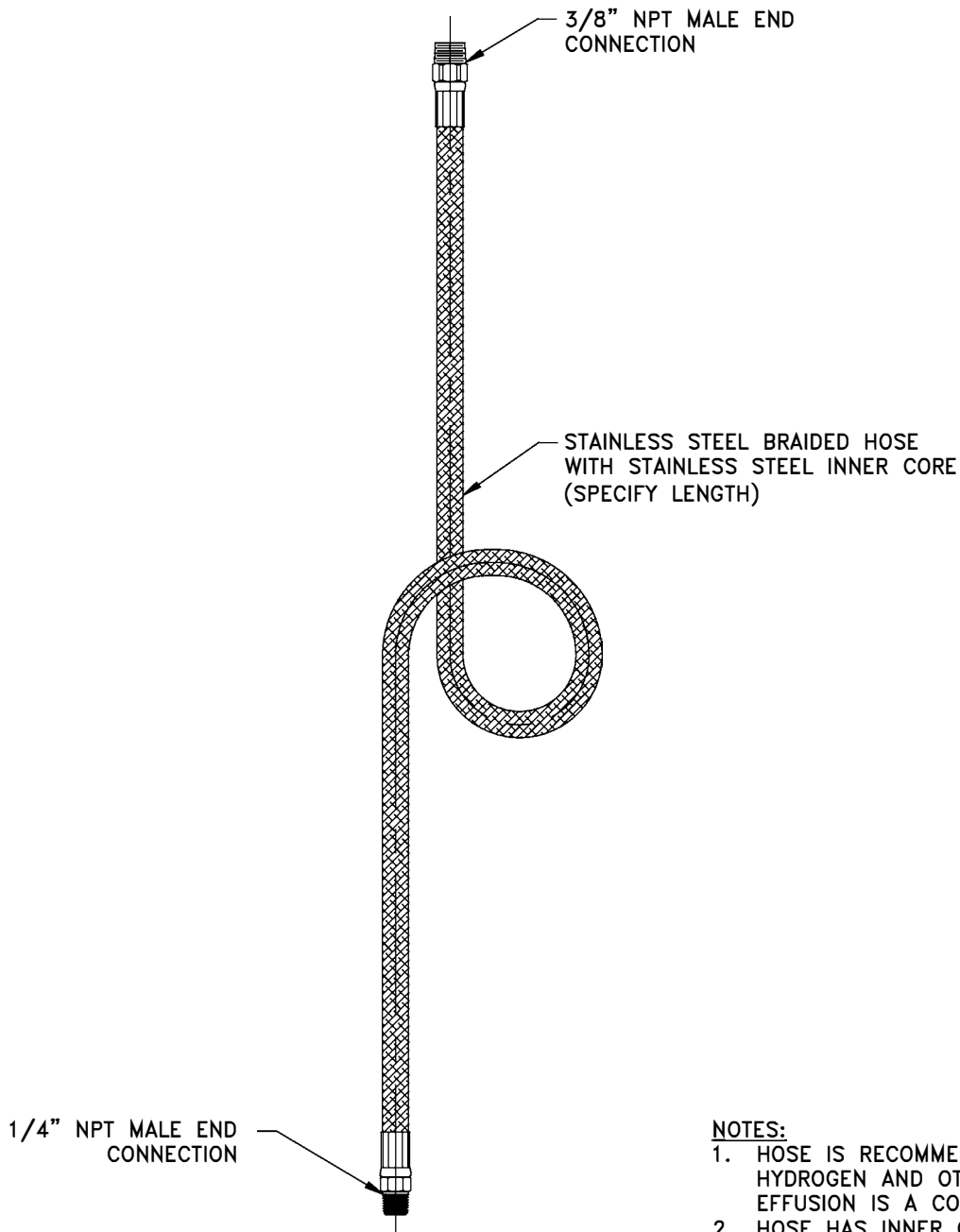
INNOVATIVE PRODUCTS FOR RESEARCH

WaterSaver Faucet
701 W Erie St
Chicago, IL 60654

312 666 5500 TELEPHONE
312 666 5501 FACSIMILE
wsflab.com

HSSS-XXX-3M2M

BRAIDED STAINLESS STEEL HOSE ASSEMBLY, 3/8" NPT MALE AND 1/4" NPT MALE END CONNECTIONS (SPECIFY LENGTH)



NOTES:

1. HOSE IS RECOMMENDED FOR HELIUM, HYDROGEN AND OTHER GASES WHERE EFFUSION IS A CONCERN.
2. HOSE HAS INNER CORE OF CORRUGATED T316 STAINLESS STEEL AND BRAIDED STAINLESS STEEL COVER.
3. HOSE IS RATED TO 2025 PSI (135 BAR) TEST PRESSURE, 1350 PSI (90 BAR) MAXIMUM WORKING PRESSURE.

MEASUREMENTS MAY VARY $\pm 1/4"$ (6mm).

Drawing Number: _____

Revision Number: 08 28 OCJ _____



WaterSaver

INNOVATIVE PRODUCTS FOR RESEARCH

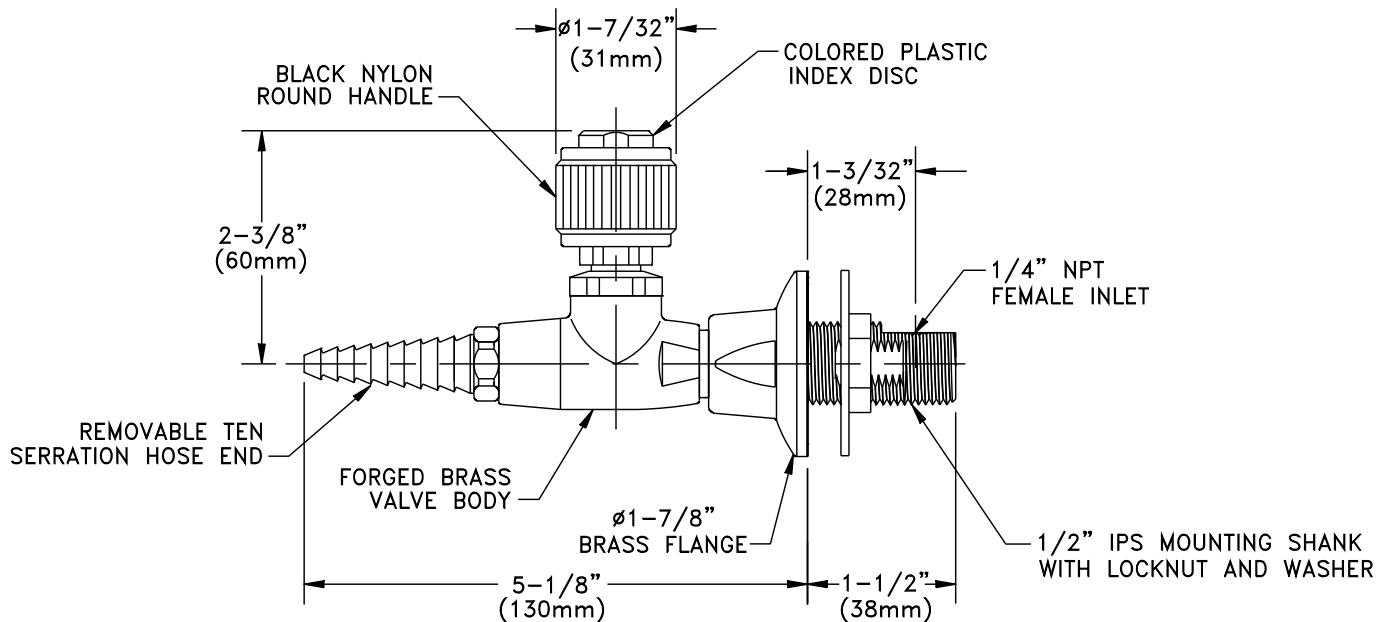
WaterSaver Faucet
701 W Erie St
Chicago, IL 60654

312 666 5500 TELEPHONE
312 666 5501 FACSIMILE
wsflab.com

INV010-16-14BV-158

PANEL MOUNTED FLANGE WITH STRAIGHT PATTERN INSTRUMENTATION NEEDLE VALVE

NOTE: FURNISHED WITH A BI637-01-14R, 1/2" IPS X 1-7/8" SIDE INLET SHANK



NOTES:

1. VALVE IS FULLY ASSEMBLED AND FACTORY TESTED AT 250 PSI. MAXIMUM WORKING PRESSURE IS 150 PSI.
2. SPECIFY IF CLEANING FOR OXYGEN OR OTHER PURE GAS SERVICE IS REQUIRED.
3. FIXTURE HAS A POLISHED CHROME PLATED FINISH.

MEASUREMENTS MAY VARY $\pm 1/4"$ (6mm).

Drawing Number: _____

Revision Number: 021720-KJS



WaterSaver

INNOVATIVE PRODUCTS FOR RESEARCH

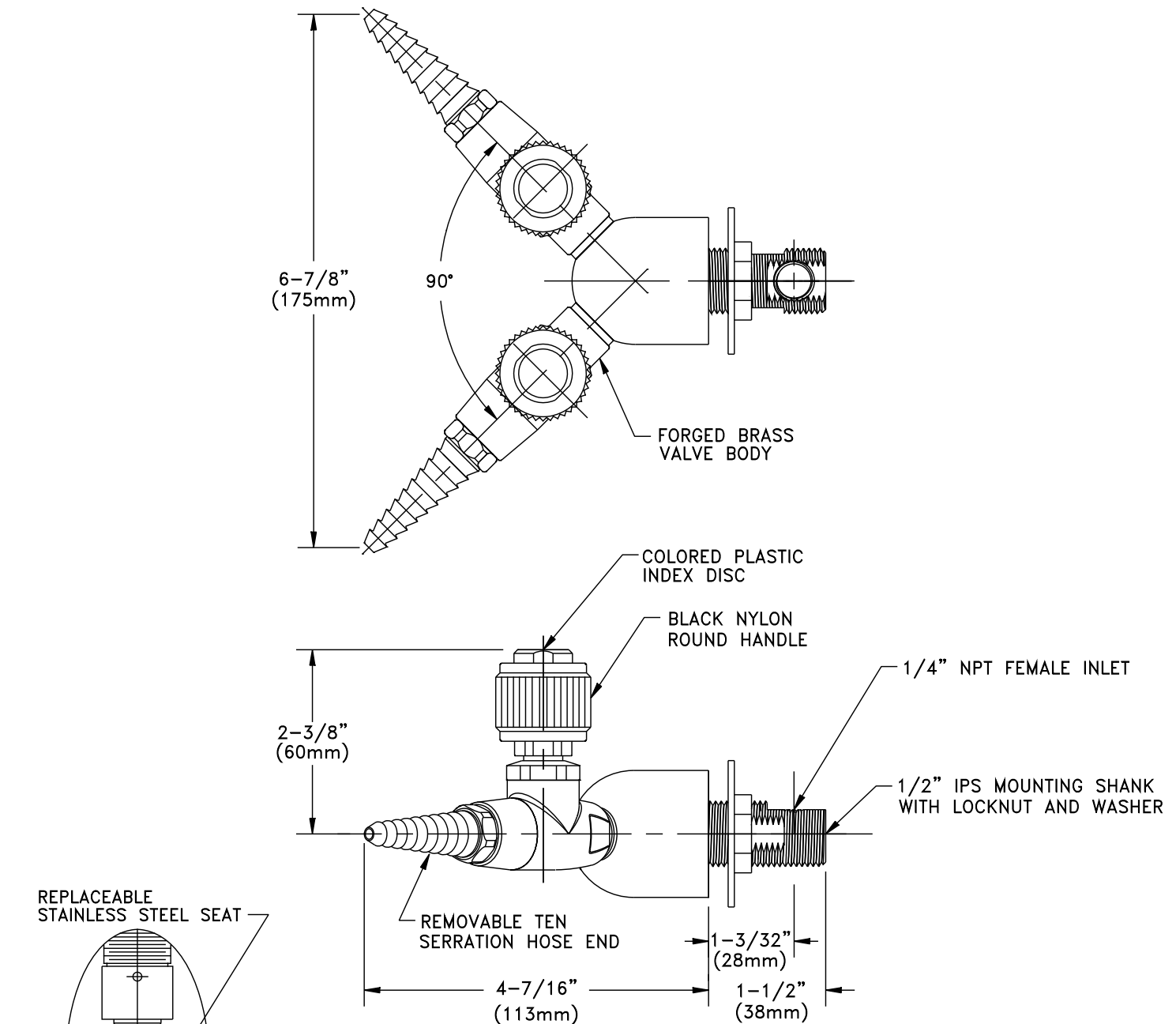
WaterSaver Faucet
701 W Erie St
Chicago, IL 60654

312 666 5500 TELEPHONE
312 666 5501 FACSIMILE
wsflab.com

INV010-16-14BV-141

INSTRUMENTATION NEEDLE VALVE ASSEMBLY, PANEL MOUNTED DOUBLE

NOTE: FURNISHED WITH BI637-02-04R 1/2" IPS X 2-1/4" SIDE INLET MOUNTING SHANK

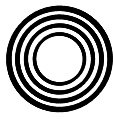


NOTES:

1. VALVE IS FULLY ASSEMBLED AND FACTORY TESTED AT 250 PSI. MAXIMUM WORKING PRESSURE IS 150 PSI.
2. SPECIFY IF CLEANING FOR OXYGEN OR OTHER PURE GAS SERVICE IS REQUIRED.
3. FIXTURE HAS A POLISHED CHROME PLATED FINISH.

Drawing Number: _____

Revision Number: 082815-KJS



WaterSaver

INNOVATIVE PRODUCTS FOR RESEARCH

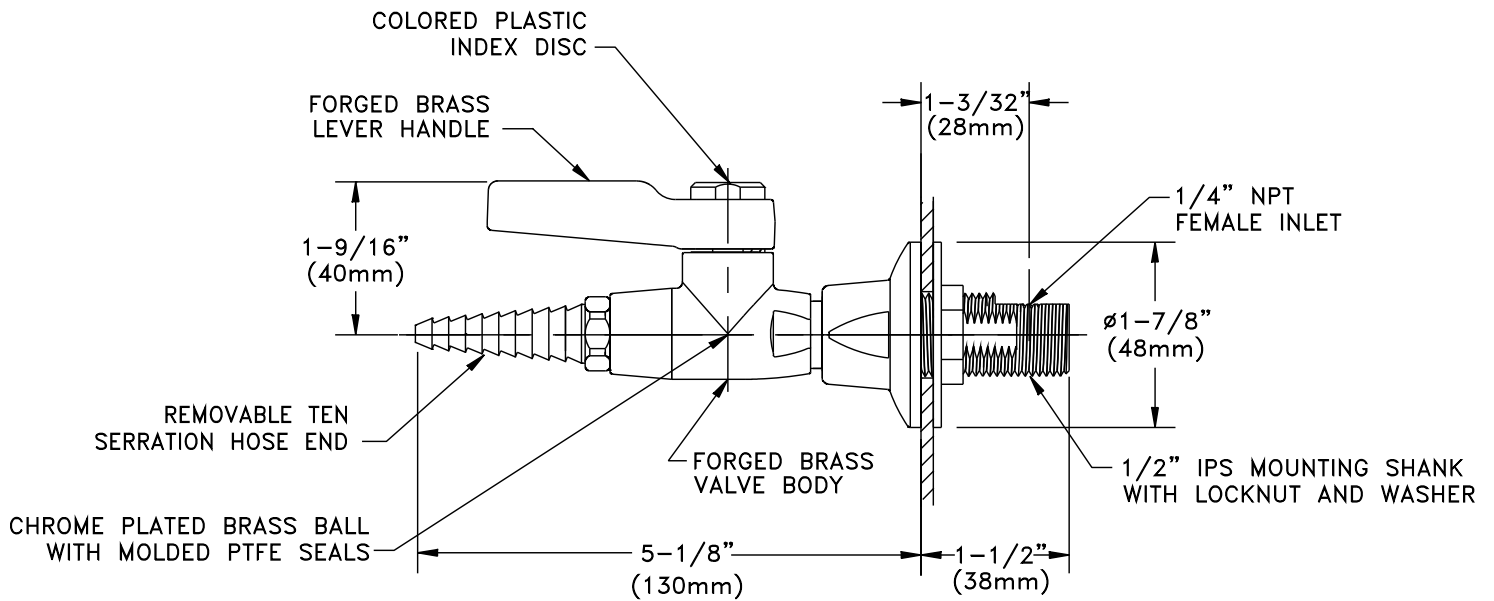
WaterSaver Faucet
701 W Erie St
Chicago, IL 60654

312 666 5500 TELEPHONE
312 666 5501 FACSIMILE
wsflab.com

L4200-158

LABORATORY BALL VALVE ASSEMBLY, PANEL MOUNTED SINGLE

NOTE: FURNISHED WITH BI637-01-14R, 1/2" IPS X 1-7/8" SIDE INLET MOUNTING SHANK



NOTES:



1. LABORATORY BALL VALVE ASSEMBLY IS CERTIFIED BY CSA INTERNATIONAL TO COMPLY WITH ANSI Z21.15 AND CGA 9.1.
2. FIXTURE IS FULLY ASSEMBLED AND FACTORY TESTED AT 150 PSI AIR PRESSURE. MAXIMUM WORKING PRESSURE IS 100 PSI.
3. SPECIFY IF CLEANING FOR OXYGEN AND HIGH PURITY GASES IS REQUIRED
4. FIXTURE HAS A POLISHED CHROME PLATED FINISH.

MEASUREMENTS MAY VARY $\pm 1/4"$ (6mm).

Drawing Number: _____

Revision Number: 042418-KJS



WaterSaver

INNOVATIVE PRODUCTS FOR RESEARCH

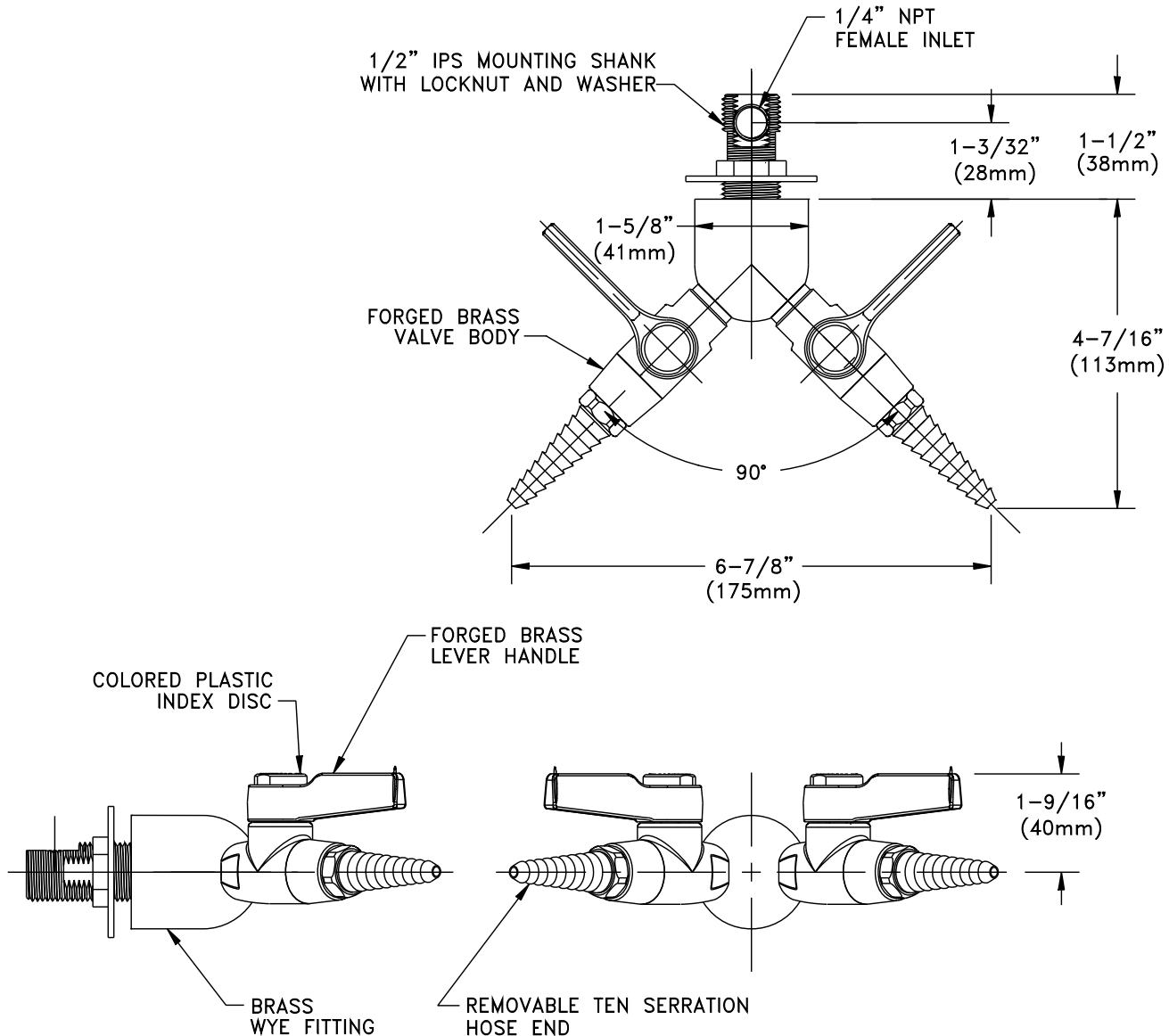
WaterSaver Faucet
701 W Erie St
Chicago, IL 60654

312 666 5500 TELEPHONE
312 666 5501 FACSIMILE
wsflab.com

L4200-141

DOUBLE LABORATORY BALL VALVE ASSEMBLY, PANEL MOUNTED

NOTE: FURNISHED WITH BI637-02-04R 1/2" IPS X 2-1/4" SIDE INLET MOUNTING SHANK



NOTES:



1. LABORATORY BALL VALVE ASSEMBLY IS CERTIFIED BY CSA INTERNATIONAL TO COMPLY WITH ANSI Z21.15 AND CGA 9.1.
2. FIXTURE IS FULLY ASSEMBLED AND FACTORY TESTED AT 150 PSI AIR PRESSURE. MAXIMUM WORKING PRESSURE IS 100 PSI.
3. SPECIFY IF CLEANING FOR OXYGEN AND HIGH PURITY GASES IS REQUIRED
4. FIXTURE HAS A POLISHED CHROME PLATED FINISH.

MEASUREMENTS MAY VARY $\pm 1/4$ " (6mm).

Drawing Number: _____

Revision Number: 021516-TEC