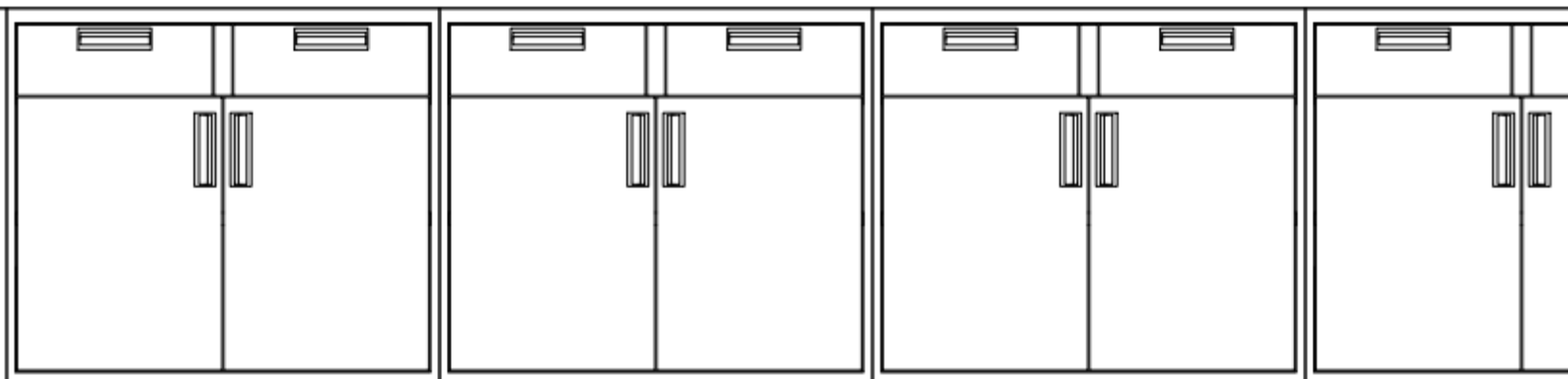
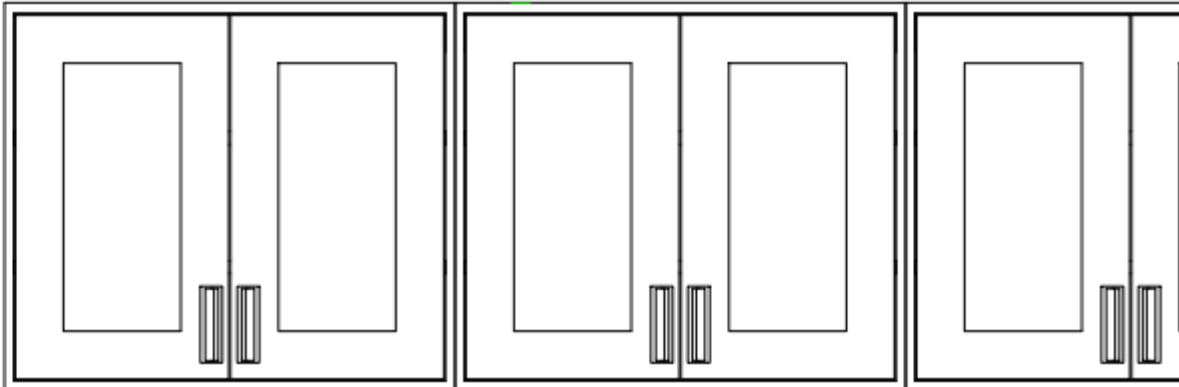


ONEPOINTE SOLUTIONS

LABORATORY | INDUSTRIAL | COMMERCIAL

LABORATORY CASEWORK & WORK SURFACES



MAINTENANCE GUIDE

Overview

We are honored that you have chosen our casework and work surface products for your laboratory, industrial or commercial needs.

At OnePointe Solutions, we are continually improving the quality and versatility of our products to solve complex workspace issues. We strive to exceed each customer's expectations via our products and our outstanding customer support.

Our goal is to bring about change through better designs, higher quality components, and customer service that is second to none. Whether your project calls for a single cabinet, a few countertops, enough furniture a multi-floor lab facility or something in between we've got you covered!

To help you keep your casework and work surfaces looking great and remaining long-lasting, we have prepared for you a maintenance guide to aid you in performing regular housekeeping duties and cleaning throughout the use of your OnePointe Solution products.

Table of Contents

Casework Cleaning & Maintenance	2
Work Surfaces Cleaning & Maintenance.....	3-4
Service Fittings Cleaning & Maintenance.....	5

Contact Us

1112 Swenson Blvd, Elgin, Texas 78621 | (866) 612-7312

www.onepointesolutions.com | info@onepointesolutions.com

Casework Cleaning & Maintenance

Powder-Coated Metal & Stainless Steel Casework

CAUTION:

When using any type of solvent as a cleaning agent, make sure the area is well ventilated. DO NOT use solvents close to any heat source or open flame.

Clean all exposed steel surfaces and hardware on a regular basis using good quality, commercially available cleaner/wax available at any automotive accessory store. The wax will form a protective barrier between the finished surface and any harmful chemicals.

If the casework is heavily soiled, wipe it clean with Naptha or Mineral Spirits before you apply polish. If your casework needs to be completely refinished, please contact your OnePointe Solutions sales representative.

Don't forget to check drawers and shelves often for chemical spills or leaks. Prompt clean-up is the key to preventing permanent damage.

Wood Casework

Clean all exposed wood casework surfaces and hardware on a regular basis using a mild detergent and clean, warm water. Please make certain all surfaces are thoroughly dried after each cleaning.

Once the casework has dried, apply a coating of good quality, commercially available wood furniture polish.

If your casework is heavily soiled, you may need a strong detergent to remove stubborn stains. If your casework needs to be completely refinished, please contact your OnePointe Solutions sales representative.

Don't forget to check drawers and shelves often for chemical spills or leaks. Prompt clean-up is the key to preventing permanent damage.

Plastic Laminate Casework

Clean all exposed plastic laminate casework surfaces and hardware on a regular basis using a mild detergent diluted in clean warm water applied with a clean soft cloth or clean sponge.

Difficult stains can be removed using a mild household cleaner/detergent such as Fantastik or Formula 409 and a soft bristled brush, repeating as necessary. Follow up by cleaning as above.

If stain persists, use a paste of baking soda and water and apply with a soft bristles brush. Light scrubbing for ten to twenty strokes should remove most stains.

Excessive scrubbing or the use of strong abrasive cleaners could damage the surface, especially any gloss surfaces.

Prolonged exposure to harsh cleaners or bleach will cause discoloration. Do not forget to check drawers and shelves often for chemical spills or leaks.

Prompt clean-up is the key to preventing permanent damage.

Casework Cleaning Checklist

- Clean casework according to a regular schedule, with spot cleaning as needed.
- Use the right cleaning methods and products.
- Check shelves and drawers often for chemical spills and leaks.

Work Surface Cleaning & Maintenance

Epoxy Resin Tops

Promptly clean up and wipe away all spills. Use acetone (where allowed) to thoroughly clean surfaces.

Apply acetone and wipe away with a paper towel or clean rag.

As an alternative, Crystal Simple Green® (or comparable household cleaning product) can be used as well. An occasional application of finish oil or Murphy's Oil® can be used to restore the luster of a surface, but use in moderation as too much oil can cloud a surface.

Phenolic Resin & Solicor-CR Tops

Wipe down surface with a damp cloth and mild soap, followed by a wet cloth. Dry with a paper towel to prevent streaks. Wipe surface using a clean cloth and hot water.

For persistent stains, a soft sponge or nylon brush and a non-abrasive household cleaning solution may be used. Apply a cleaning detergent to the stain and leave overnight, removing with a wet cloth the following day.

If stain persists, a light-abrasive cleaning solution may be used with great care to not damage the surface.

For residue such as wax or paraffin, use a plastic or wooden spatula to carefully remove the substance, and clean the remaining stain using a method described above. If the top is physically damaged, such as a scratch that penetrates the surface, we recommend replacing the top.

Wood Tops

CAUTION:

When using any type solvent or finish, make certain the area is well ventilated. DO NOT use solvents or finishing materials, i.e. lacquers or varnishes near any heat source or open flames.

Oil Finished

Clean oil finished tops frequently with mild detergent. After each cleaning, apply a coat of good quality commercially available furniture polish.

To refinish an oil finished top, clean it thoroughly by scraping and sanding the surface with a fine grit abrasive paper to remove minor scratches. Apply one coat of any good quality, commercially available penetrating wood finish.

Once the refinished surface has dried thoroughly, apply a coat of good quality furniture polish.

Natural Varnished

Clean varnished tops with general purpose detergent and warm water. Apply a coat of commercially available furniture polish to protect the top surface between cleanings.

If the top surface has been damaged, sand with a very fine grit sand paper. Clean thoroughly and allow to dry. Apply two coats of a clear varnish.

Work Surface Cleaning & Maintenance

Plastic Laminate Tops

CAUTION:

When using any type of solvent as a cleaning agent, make sure the area is well ventilated. DO NOT use solvents close to any heat source or open flame.

Clean plastic laminate work top surfaces on a regular basis using a mild detergent diluted in clean warm water applied with a clean soft cloth or clean sponge. Difficult stains can be removed using a mild household cleaner/detergent such as Fantastik or Formula 409 and a soft bristled brush, repeating as necessary.

Follow up by cleaning as above. If stain persists, use a paste of baking soda and water and apply with a soft bristles brush.

Light scrubbing for ten to twenty strokes should remove most stains. Excessive scrubbing or the use of strong abrasive cleaners could damage the surface, especially any gloss surfaces.

Prolonged exposure to harsh cleaners, mild solvents or bleach will cause discoloration.

Stainless Steel Tops

Clean stainless steel surfaces using general purpose detergent and warm water. Restrict or avoid contact with the chemicals listed below, as well as any chemical in the Halogen family, because they will discolor stainless steel.

- Aqua Regia
- Dakins Solution
- Hydrofluoric Acid
- Phosphoric Acid
- Chlorine Bleach
- Ferric Chloride
- Iodine
- Sodium Bisulfate
- Chloride (Wet)
- Hyrdochloric Acid
- Mercuric Chloride
- Sulfuric Acid

Solid Surface Tops

For day-to-day cleaning, warm soapy water, or non-abrasive household cleaners such as glass cleaner, Fantastik®, Formula 409® or commercially available solid surface cleaners will remove most residues.

Then rinse and towel dry the surface to prevent spotting, especially in areas with hard water. For stubborn residue that will not come out with day-to-day cleaning methods, a slightly stronger cleaner is required.

Work Surface Cleaning Checklist

- Clean casework according to a regular schedule, with spot cleaning as needed.
- Sand surfaces carefully when appropriate.
- Use the right cleaning methods and products.
- Use appropriate finishing agents.

Service Fittings Cleaning & Maintenance

Cleaning Service Fittings

CAUTION:

DO NOT use abrasive polishes, as they will scratch the chrome finish.

Because of their thick chrome plating, OnePointe Solution service fittings require little cleaning. Wipe them with a damp cloth using a small amount of detergent as needed.

If the chrome surface should become dull or tarnished, use an all-purpose commercially available chrome cleaning compound.

Maintaining Service Fittings

For information about replacement parts for service fittings, contact your OnePointe Solutions sales representative.

Nationwide Service

Our team travels to you to make sure that we understand your needs, get the right measurements, and install the final product on time. Our projects can be found in: New York, Chicago, Los Angeles, San Antonio, Dallas, Houston, Atlanta, Cheyenne, Des Moines, San Diego, Washington DC, San Francisco, Nashville, Honolulu, and just about everywhere else. Want to view a reference project in your area? Just ask!

ONEPOINTE SOLUTIONS

(866) 612-7312

www.onepointesolutions.com