

LAB TABLES

FULL BROCHURE

(866) 612-7312

INFO@ONEPOINTESOLUTIONS.COM

 **ONEPOINTE SOLUTIONS**



WELCOME!

ONEPOINTE SOLUTIONS IS A HIGH QUALITY MANUFACTURER OF LABORATORY CASEWORK, TABLES, AND ADAPTABLE SYSTEMS. OUR GOAL IS TO BRING ABOUT CHANGE THROUGH BETTER DESIGNS, HIGHER QUALITY COMPONENTS, AND CUSTOMER SERVICE THAT IS SECOND TO NONE.

WHETHER YOUR PROJECT IS FOR A SINGLE LAB TABLE, A NEW MULTI-FLOOR LAB FACILITY, OR SOMETHING IN BETWEEN WE'VE GOT YOU COVERED!

- THE ONPOINTE TEAM



WWW.ONEPOINTESOLUTIONS.COM

TABLE OF CONTENTS

Fully Welded Frame	6
Bolt Together Frame	7
Sit/Stand Frame	8
Proteus Frame	9
Flex System Frame	10
Custom Design Frame	11
Color Options	12
Top Options	14
Foot Options	15
Cabinet Options	18
Frame Accessories	24
Upright Options	25
Customer Testimonials	26

ONEPOINTE SOLUTIONS

FRAMES



866.612.7312

FULLY WELDED FRAME



DESCRIPTION

Your Fully Welded Frames are the best choice when needing the strongest of the strong in your tables. They are built with 14ga tub steel, and are powder coated to the color of your choice. Outside welds are ground smooth to provide a seamless transition between joints. Fully Welded Frames will give you a sleek looking table that will impress in both ability and aesthetics.

HIGHLIGHTS

- No Assembly Required
- Heavy Duty Steel Construction
- Seamless Look & Feel
- Stainless & Powder Coat Finish Available
- SEFA Compliant
- Third Party Independently Tested
- Fully Welded Threaded Leg Inserts
- Multiple Size Options

STANDARD SIZES (CUSTOM UPON REQUEST)

WIDTH	36"	42"	48"	54"	60"	72"	78"	84"	90"	96"
HEIGHT	✓	✓	✓	✓	✓	✓	✓	✓	✓	✓
DEPTH	✓	✓	✓	✓						
	✓	✓	✓							

BOLT TOGETHER FRAME



Optional Apron Drawers



DESCRIPTION

Your Bolt Together Frames are a great choice for those that desire to have sturdy table options, while needing flexibility to easily maneuver upon delivery. They are built with high quality 14ga tube steel legs, and are powder coated to the color of your choice. You will also notice a 4" apron around the Bolt Together Frame, which is great for providing additional storage.

HIGHLIGHTS

- Quick & Easy Assembly
- Hidden Frame Hardware After Assembly
- Stainless & Powder Coat Finish Available
- Heavy Duty Steel Construction
- SEFA Compliant
- Third Party Independently Tested
- Fully Welded Threaded Leg Inserts
- Multiple Size Options

STANDARD SIZES (CUSTOM UPON REQUEST)

WIDTH	36"	42"	48"	54"	60"	72"	78"	84"	90"	96"
	✓	✓	✓	✓	✓	✓	✓	✓	✓	✓
HEIGHT	30"	36"	ADA	ADJUSTABLE						
	✓	✓	✓	✓						
DEPTH	24"	30"	36"							
	✓	✓	✓							

SIT/STAND FRAME



DESCRIPTION

Your Sit/Stand Frames are the pinnacle of height adjustability for your environment. Once set, there is a simple one button process to go from sitting to standing and vice-versa. It even has the ability to accommodate multiple presets for separate users. The Sit/Stand Frames are second to none when needing an effortless posture change to increase productivity. Your most perfect solution for hours of data entry.

HIGHLIGHTS

- Quick & Easy Assembly
- Energy Efficient
- 3 Color Options
- Quiet Leg Adjustability
- Ergonomic Design
- Light Duty Workstation
- Limited Accessory Options
- Position Memory Buttons

STANDARD SIZES (CUSTOM UPON REQUEST)

WIDTH	36"	42"	48"	54"	60"	72"	78"	84"	90"	96"
HEIGHT	✓	✓	✓	✓	✓	✓				
DEPTH	24"	30"	36"	ADJUSTABLE						
	✓	✓	✓	✓						

PROTEUS FRAME



*Accessories Not Shown

DESCRIPTION

Your Proteus Frames are designed to be the ultimate choice when you need adaptability, stability, and mobility. Built with our click-design through the entire upright, you are able to customize the height of every part of your table. You can add and remove accessories based on your needs within seconds. Proteus Frames come with leveling castors, allowing you to move your workstations around to help create an optimal workflow in your environment.

HIGHLIGHTS

- Adaptable Design
- Heavy Duty Steel Construction
- Service Ready Uprights
- Optimized for Instrumentation
- Advanced Mobility and Leveling
- Fully Welded Base
- Height Adjustable Components
- Cantilevered Worksurface

STANDARD SIZES (CUSTOM UPON REQUEST)

WIDTH	36"	42"	48"	54"	60"	72"	78"	84"	90"	96"
HEIGHT			✓		✓	✓				
DEPTH	24"	30"	36"	✓						
		✓	✓							

FLEX SYSTEM FRAME



DESCRIPTION

Your Flex System Frame is a great evolutionary solution for labs that need their furniture to grow as they do. Built with a height adjustable worksurface, you will never have to fear being stuck in an uncomfortable position again. You will be able to run services through the upright towers for easy surface area use. Unlike other tables, this system can have a worksurface on both sides of a shared upright tower, allowing you to maximize your environment and save space.

HIGHLIGHTS

- Single or Double Sided Assembly
- Perfect for Island Configuration
- Heavy Duty Construction
- Accepts All Upright Components
- Adjustable Shelving
- Height Adjustable Worksurface
- Adaptable Design
- Perfect for Mobile Storage

STANDARD SIZES (CUSTOM UPON REQUEST)

WIDTH	36"	42"	48"	54"	60"	72"	78"	84"	90"	96"
HEIGHT	✓	✓	✓	✓	✓	✓	✓	✓	✓	✓
DEPTH	24"	30"	36"	✓						
	✓	✓	✓							

CUSTOM DESIGN



DESCRIPTION

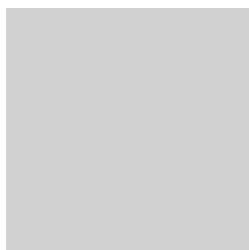
Your Custom Frames are easily the most optimal selection to fit your needs. Using many of the elements that have already seen and so much more, we can specifically design a table that 100% meets your needs. Regardless of the size, load, or functional requirements, we can design, model, and construct a table that is completely unique to you and your environment. Don't settle for something that "kind of works", when you could have a table that is made just for you.

HIGHLIGHTS

- Designed to Fit Your Space
- Fast Turnaround Times
- More Versatility
- In-House Design Team
- Better Return on Investment
- Manufacturer Direct
- Shop Drawing Approvals
- Built to Last

ALL SIZES ARE CUSTOMIZED TO YOUR SPECIFICATIONS

COLOR OPTIONS



LIGHT GREY



WINDOW GREY



BASALT GREY



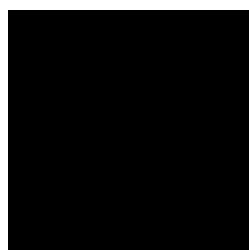
OYSTER WHITE



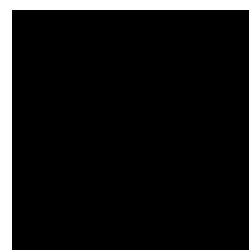
LIGHT IVORY



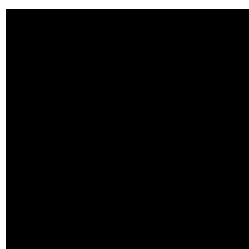
BEIGE GREY



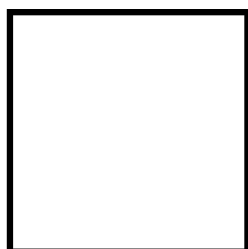
JET BLACK (GLOSS)



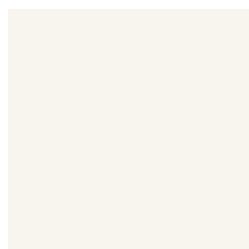
JET BLACK (MATTE)



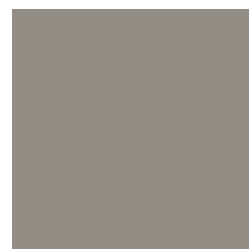
JET BLACK (TEXTURE)



WHITE



PAPYRUS WHITE



STONE GREY



GENTIAN BLUE



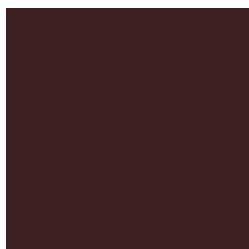
GREEN BLUE



BLUE GREEN



FLAME RED



BLACK RED

CUSTOM COLORS
AVAILABLE UPON REQUEST

ONEPOINTE SOLUTIONS

WORKSURFACE & FOOT OPTIONS



866.612.7312



EPOXY RESIN

Epoxy resin is a quality material that is resistant to most chemicals, moisture, impact and heat; it's the ideal solution for environments that are very corrosive or have a high level of moisture. OnePointe Solutions offers epoxy resin countertops and workbenches.



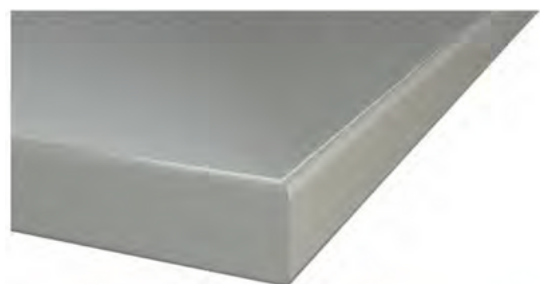
PHENOLIC RESIN

Phenolic resin countertops and table tops meet the requirements of most laboratories while including additional benefits such as chemical, wear, and water resistance.



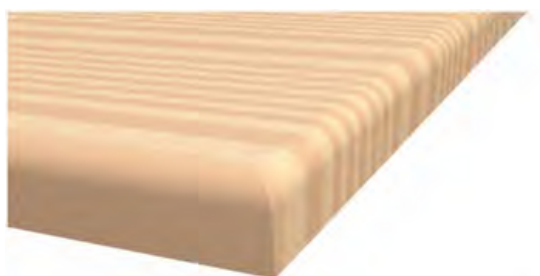
HIGH-DENSITY POLYETHYLENE

High-Density Polyethylene tops are light weight and provide a non-absorbent and stain free surface that is best used for food preparation.



STAINLESS STEEL

Stainless steel is the ultimate solution for adding resistance to your workspace. As a nonporous surface no liquid or substance can penetrate into the material; bacteria, mold, and other common germs don't stand a chance.



MAPLE BLOCK

The rock-hard edge grain construction of our maple butcher block ensures maximum strength and durability. Our maple tops are hard at work in factories, in kitchens, and on shipping and receiving docks around the world. In the material handling business there is no better top than solid maple.

FOOT OPTIONS



HEAVY DUTY NYLON LEVELER
FOOT-LVLR-CHROME
Load Rating (Per Set of 4): 1,800 lbs



ANTI-VIBRATION LEVELER
FOOT-LVLR-AV3.75
Load Rating (Per Set of 4): 3,000 lbs



TOTAL LOCKING CASTER
FOOT-CAST4
Load Rating (Per Set of 4): 1,500 lbs



LEVELING CASTER
FOOT-CAST2-LEVELING
Load Rating (Per Set of 4): 2,300 lbs



PLATE CASTER
FOOT-CAST4-PLATE
Load Rating (Per Set of 4): 1,500 lbs



PLATE LEVELING CASTER
FOOT-CAST4-LEVELING-PLATE
Load Rating (Per Set of 4): 3,000 lbs

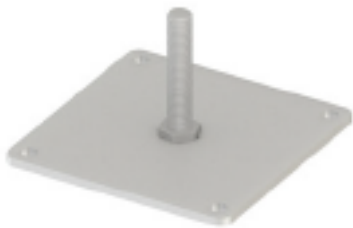


SUSPENSION CASTER
FOOT-CAST4-AV-PLATE
Load Rating (Per Set of 4): 1,200 lbs



HEAVY DUTY LEVELING CASTOR
FOOT-CAST2.5-HD
Load Rating (Per Set of 4): 2,400 lbs

FOOT OPTIONS



ANCHOR FOOT

FOOT-ANCHOR

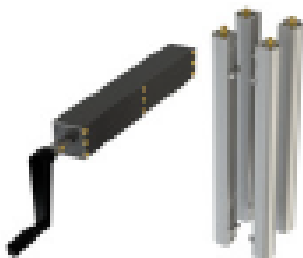
Load Rating (Per Set of 4): 3,000 lbs



MANUAL ADJUSTABLE LEGS

AL(1.5/2.0) 12

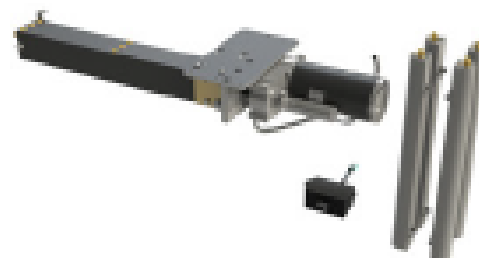
Load Rating (Per Set of 4): Matches Foot Option



HANDCRANK HYDRAULIC LEGS

HYD 4M-12

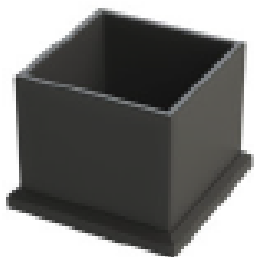
Load Rating: 1,000 lbs



HANDCRANK HYDRAULIC LEGS

HYD 4E-12

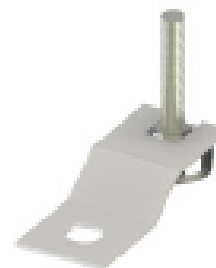
Load Rating: 1,000 lbs



LEG BOOT

LEG-BOOT

*Only Available for 2" Tube



LEVELER ANCHOR

FOOT-ANCHOR-LVLR

LEG ACCESSORIES

ONEPOINTE SOLUTIONS

LAB CABINETS



866.612.7312

MOBILES

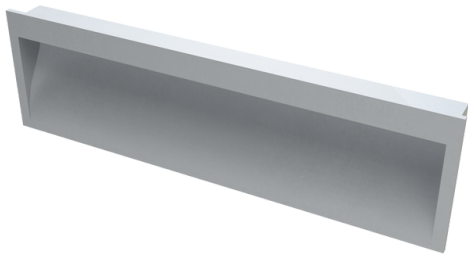
WHETHER YOUR PROCESS REQUIRES IT OR IF YOU JUST WANT TO BUILD THE ULTIMATE FLEXIBLE TABLE LAB, OUR MOBILE CABINETS ARE A GREAT SOLUTION.

FURNISHING YOUR SPACE WITH OUR MOBILE CABINETS CONTRIBUTES TO PRESENT DAY ADAPTABLE AND FLEXIBLE SPACE DESIGN TECHNIQUES THAT ARE POPULAR IN ANY LABORATORY.

SUSPENDED

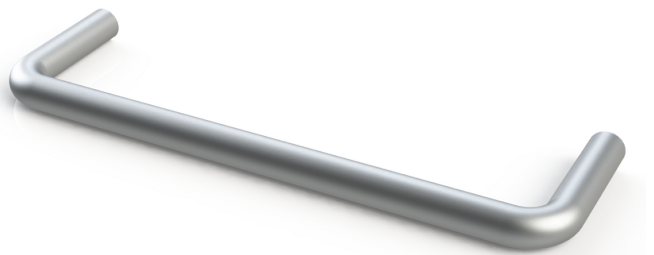
SUSPENDED CABINETS ARE DESIGNED TO BE FASTENED BENEATH THE WORK SURFACE. ONCE INSTALLED THEY ARE A SOLUTION THAT IS VERY ROBUST AND BECOMES PART OF THE TABLE.

HANDLE OPTIONS



ALUMINUM RECESSED HANDLES

*POWDER COAT OPTIONS
AVAILABLE



STAINLESS STEEL
WIRE PULLS

CABINET OPTIONS



Out Of The Box Top: Steel

Upgradeable Top:

*Upgrading Tops Will
Change Mobile Height

**Epoxy
Phenolic
Stainless Steel
Maple Block
HDPE**

*Mobile Cabinets Are Shown With Phenolic Tops



MOB-30WWDD-01(L/R)

HEIGHT: 30"
WIDTHS: 18", 24"
DEPTHS: 19", 22"
DOOR: LEFT (L), RIGHT(R)



MOB-30WWDD-11(L/R)B

HEIGHT: 30"
WIDTHS: 18", 24"
DEPTHS: 19", 22"
DOOR: LEFT (L), RIGHT(R)



MOB-30WWDD-20B

HEIGHT: 30"
WIDTHS: 18", 24", 30", 36", 42", 48"
DEPTHS: 19", 22"



MOB-30WWDD-30B

HEIGHT: 30"
WIDTHS: 18", 24", 30", 36", 42", 48"
DEPTHS: 19", 22"



MOB-30WWDD-40B

HEIGHT: 30"
WIDTHS: 18", 24", 30", 36", 42", 48"
DEPTHS: 19", 22"



MOB-30WWDD-40C

HEIGHT: 30"
WIDTHS: 18", 24", 30", 36", 42", 48"
DEPTHS: 19", 22"

CABINET OPTIONS



MOB-30WWDD-22B

HEIGHT: 30"
WIDTHS: 30", 36", 42", 48"
DEPTHS: 19", 22"



MOB-30WWDD-12B

HEIGHT: 30"
WIDTHS: 30", 36", 42", 48"
DEPTHS: 19", 22"



MOB-30WWDD-32B

HEIGHT: 30"
WIDTHS: 30", 36", 42", 48"
DEPTHS: 19", 22"



MOB-30WWDD-02

HEIGHT: 30"
WIDTHS: 30", 36", 42", 48"
DEPTHS: 19", 22"

SUSPENDED CABINETS



SUS-08WW19-10B

HEIGHT: 08"
WIDTHS: 18", 24", 30", 36", 42", 48"
DEPTHS: 19"



SUS-14WW19-20B

HEIGHT: 14"
WIDTHS: 18", 24", 30", 36", 42", 48"
DEPTHS: 19"



SUS-20WW19-30B

HEIGHT: 20"
WIDTHS: 18", 24", 30", 36", 42", 48"
DEPTHS: 19"



SUS-20WW19-20B

HEIGHT: 20"
WIDTHS: 18", 24", 30", 36", 42", 48"
DEPTHS: 19"

CABINET OPTIONS



SUS-HHWW19-01(L/R)

HEIGHT: 20", 26"
WIDTHS: 18", 24"
DEPTHS: 19"
DOOR: LEFT (L), RIGHT (R)



SUS-26WW19-11(L/R)B

HEIGHT: 26"
WIDTHS: 18", 24"
DEPTHS: 19"
DOOR: LEFT (L), RIGHT (R)



SUS-26WW19-40B

HEIGHT: 26"
WIDTHS: 18", 24", 30", 36", 42", 48"
DEPTHS: 19"



SUS-26WW19-20B

HEIGHT: 26"
WIDTHS: 18", 24", 30", 36", 42", 48"
DEPTHS: 19"



SUS-26WW19-30B

HEIGHT: 26"
WIDTHS: 18", 24", 30", 36", 42", 48"
DEPTHS: 19"



SUS-26WW19-12B

HEIGHT: 26"
WIDTHS: 30", 36", 42", 48"
DEPTHS: 19"



SUS-26WW19-22B

HEIGHT: 26"
WIDTHS: 30", 36", 42", 48"
DEPTHS: 19"



SUS-HHWW19-02

HEIGHT: 20", 26"
WIDTHS: 30", 36", 42", 48"
DEPTHS: 19"

CABINET OPTIONS



SITTING HEIGHT CABINETS



MOB-24WWDD-01(L/R)

HEIGHT: 24"
WIDTHS: 18", 24"
DEPTHS: 19", 22"
DOOR: LEFT (L), RIGHT (R)



MOB-24WWDD-20B

HEIGHT: 24"
WIDTHS: 18", 24", 30", 36", 42", 48"
DEPTHS: 19", 22"



MOB-24WWDD-30B

HEIGHT: 24"
WIDTHS: 18", 24", 30", 36", 42", 48"
DEPTHS: 19", 22"



MOB-24WWDD-30C

HEIGHT: 24"
WIDTHS: 18", 24", 30", 36", 42", 48"
DEPTHS: 19", 22"

OUR CABINETS



ANTI-TIP DESIGN

TOTAL LOCKING CASTORS

MULTIPLE TOP OPTIONS

HEAVY DUTY CONSTRUCTION

SOFT-CLOSE DOORS AND DRAWERS

CONCEALED HINGE DESIGN

SEFA CERTIFIED

ONEPOINTE SOLUTIONS

ACCESSORIES



866.612.7312

FRAME OPTIONS



**FULL
LOWER SHELF**
-Powder Coated Steel
-Matching Top Option



**HALF
LOWER SHELF**
-Powder Coated Steel
-Matching Top Option



MODESTY PANEL
-Powder Coated Steel



POWER STRIP
-Mount to Frame
-Mount to Upright System



MONITOR ARM
-Mounted to Top
-Mount to Upright System



KEYBOARD TRAY
-Mount to Frame



CPU HOLDER
-Mount to Frame



CONNECTOR PLATE
-Mount Multiple Frames Together

UPRIGHT OPTIONS



DUAL UPRIGHTS

FOR TABLE WIDTHS: 36"-72"



TRIPLE UPRIGHTS

FOR ALL TABLE WIDTHS



FULL SHELF

DEPTHS: 12", 15", 18"
FOR TABLE WIDTHS: 36"-72"



HALF SHELF

DEPTHS: 12", 15", 18"
FOR ALL TABLE WIDTHS



STEEL CABINET

HEIGHTS: 19", 31"
WIDTHS: 24", 30", 36", 42", 48"
DEPTHS: 13"



GLASS CABINET DOOR

HEIGHTS: 19", 31"
WIDTHS: 24", 30", 36", 42", 48"
DEPTHS: 13"



LIGHT KITS



PEGBOARD/ DRYING RACK

REQUIRES TRIPLE UPRIGHTS

HIGH STANDARDS

MAKE LIFE LONG CUSTOMERS!

Having clean really rugged furniture that can hold up to the variety of activities that we do on a daily basis is really important. OnePointe Solutions has been great in helping custom design furniture meets the need of our program, but also fits within our size constraints and budget constraints.

J Sperry - Robotics Program

We LOVE the tables. It was a pleasure doing business with you, and we will definitely use your company for table purchases in the future!. Thanks for your help in expediting the process for us. It was much appreciated.

C. Johnston -Dominion Diagnostics

The new lab is GREAT! Thanks so much. We really love all our new tables and are using them for a variety of projects, everything from water baths monitoring, load cell set-ups, vibration experiments, and electronics.

S. Russel - Univ. Rochester

We had a 3 month impacted project. Our modular carts were delayed from another provider. I found this 3 weeks before delivery was supposed to arrive. OnePointe Solutions stepped in and was able to provide an excellent product within 5 weeks. We are very happy and we have not impacted research.

C. Horner - Bayer



PRODUCTS



SERVICES

CALL US AT 866.612.7312



FULL LAB DESIGN & CASEWORK



INSTRUMENTATION CARTS



FUME HOODS



LAB GRADE CHAIRS



FLEXIBLE LAB SOLUTIONS



FOR A FULL LOOK AT ALL OUR PRODUCT OFFERINGS, SPECIFICATIONS,
BROCHURES PLEASE VISIT WWW.ONEPOINTESOLUTIONS.COM



ONEPOINTE SOLUTIONS

1112 Swenson Blvd
ELGIN, TEXAS 78621

PH: 866-612-7312 FAX: 512-532-6320