



ONEPOINTE SOLUTIONS

THE BEST OF OUR WORK

1112 Swenson Blvd, Elgin, TX 78621 • www.onepointesolutions.com



ABOUT US

Over a decade ago, OnePointe Solutions opened its doors as a provider of technology solutions to businesses within the central Texas area and has since become the leading manufacturer of custom laboratory furniture and industrial workbenches in the country.

We believe in bringing maximum value to our customers and our employees. Our goal is to bring about change through better designs, higher quality components, and customer service that is second to none.

We are OnePointe Solutions!



CONTENTS

- 
- 04. Texas Tech University
 - 05. BlueSphere Bio
 - 06. PhytogenX, Inc.
 - 07. Revochem, LLC
 - 08. RxSight
 - 09. Vi-Jon, Inc.
 - 10. Reed Food Technology
 - 11. Heliae Development, LLC
 - 12. Aeglea BioTherapeutics
 - 13. Bass Pro, LLC
 - 14. California University of Science and Medicine
 - 15. FedBid
 - 16. Hartford High School
 - 17. Huvepharma, Inc.
 - 18. Lee College
 - 19. Kraton Polymers
 - 20. Mine Survival, Inc.
 - 21. The University of North Florida
 - 22. R&D Lab
 - 23. Biotechnology Lab
 - 24. Siplast, Inc.
 - 25. Sterling Creek Builders
 - 26. Brewer Dental Lab
 - 27. Bayport Laboratories, LLC
 - 28. Andrews County Jail
 - 29. New York Institute of Technology
 - 30. DZI Construction Services, Inc.
 - 31. Boise State University
 - 32. Baylor University
 - 33-34. Costco Wholesale
 - 35. Orion Laboratories
 - 36. Elgin High School
 - 37. Intrepid Build, LLC
 - 38. BND Architectural Woodwork, LLC
 - 39. Commerce Cafe
 - 40. Scribe Therapeutics Inc.
 - 41. Alphawave
 - 42. Edgley Construction Group, Inc.
 - 43-45. Project Descriptions















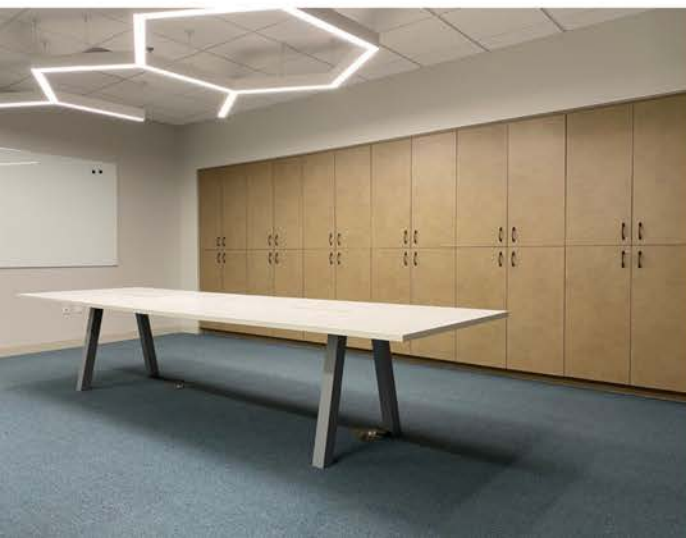


Heliae Development, LLC





Aeglea BioTherapeutics













Huvepharma, Inc.









Mine Survival , Inc.





The University of North Florida



















New York Institute of Technology





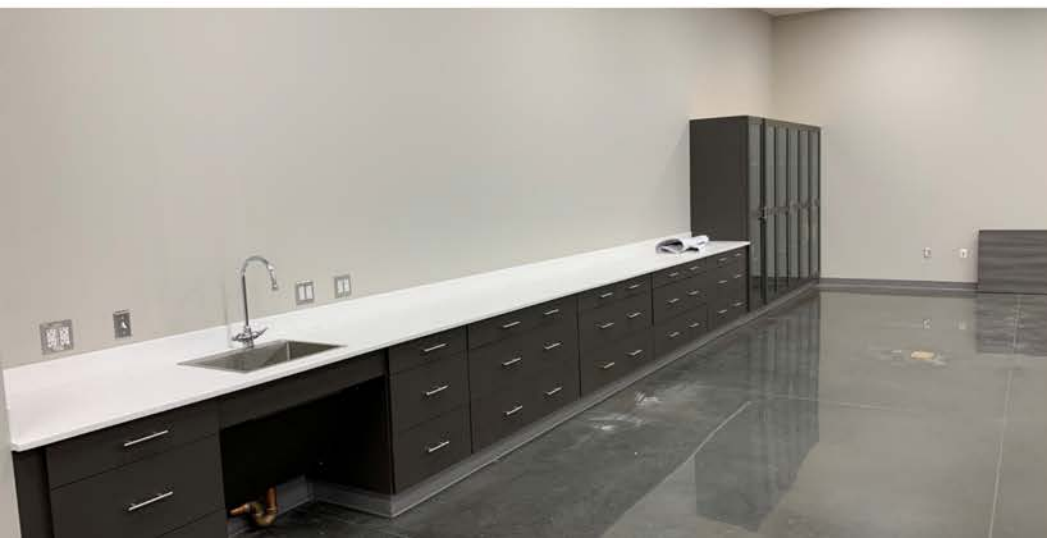


Boise State University











Orion Laboratories





Elgin High School















PROJECT DESCRIPTIONS

- 04. Customer:** Texas Tech University
Lab Furniture Shown: ESD Workbenches, Suspended Cabinets, Custom Tall Casework
Top Material: ESD Laminate (Gray)
Colors: Jet Black Textured (RAL 9005), Green Blue Gloss (RAL 5001)
- 05. Customer:** BlueSphere Bio
Lab Furniture Shown: Proteus Tables (lab islands), Lab Casework, Sink Cabinets, Mobile Cabinets, Acrylic Drying Rack
Top Material: Phenolic Resin (Lab Grade - Carbon Black)
Colors: White (RAL 9016), Custom Blue with Gloss
- 06. Customer:** PhytogenX, Inc.
Lab Furniture Shown: Custom Workbenches, Custom Lab Island Ends
Top Material: Phenolic Resin (Lab Grade - Carbon Black)
Color: Sherman Williams (RAL 5025) - Satin
- 07. Customer:** RevoChem, LLC
Lab Furniture Shown: Workbenches with Mobile Shelving, Lab Benches, Mobile Cabinets, Sink Cabinets
Top Materials: Epoxy Resin (Grey & Black Onyx), Phenolic Resin (Lab Grade - Steel Grey)
Color: Papyrus White (RAL 9018)
- 08. Customer:** RxSight
Lab Furniture Shown: Fixed Islands with Reagent Shelving, Lab Casework, Fume Hood, Flammable Cabinets
Top Materials: Phenolic Resin (Lab Grade - Carbon Black)
Colors: White (RAL 9016), Custom Light Blue (Flammable Cabinets), Custom Teal (Reagent Shelving Tips & Service Chases)
- 09. Customer:** Vi-Jon, Inc.
Lab Furniture Shown: Fixed Lab Islands with Reagent Shelving
Top Materials: Phenolic Resin (Lab Grade - Carbon Black)
Color: Window Grey (RAL 7040)
- 10. Customer:** Reed Food Technology
Lab Furniture Shown: Custom Wall Cabinets, Lab Casework, Stainless Steel Drying Rack
Top Material: Phenolic Resin (Lab Grade - Carbon Black)
Colors: White (RAL 9016), Basalt Grey (RAL 7012)
- 11. Customer:** Heliae Development, LLC
Lab Furniture Shown: Proteus Tables (lab islands), Workbenches, Mobile Cabinets
Sink Cabinet, Wall Shelving, Lab Seating
Top Material: Epoxy Resin (Gray & Graphite), Phenolic Resin (Lab Grade - Carbon Black)
Colors: Basalt Grey (RAL 7012), Papyrus White (RAL 9018)
- 12. Customer:** Aeglea BioTherapeutics
Lab Furniture Shown: Custom Workbenches, Plastic Laminate Casework
Top Material: Phenolic Resin (Lab Grade - Carbon Black), Stainless Steel
Color: Light Grey Gloss (RAL 7035)
- 13. Customer:** Bass Pro, LLC
Industrial Furniture Shown: Custom Packing Stations with Shelves
Top Material: Phenolic Resin (Standard Grade - Black)
Color: Basalt Grey Texture (Ral 7012)
- 14. Customer:** California University of Science and Medicine
Lab Furniture Shown: Custom Lab Islands, Lab Casework, Plastic Laminate Casework
Top Material: Phenolic Resin (Lab Grade - Glacier White), Wilsonart Solid Surface (Designer White D354SL)
Colors: White Gloss (RAL 9016), Wilsonart Fawn Cypress 8208
- 15. Customer:** FedBid
Industrial Furniture: Shown: Custom ESD Workbenches
Top Material: ESD Laminate (White)
Color: Jet Black Matte (RAL 9005)
- 16. Customer:** Hartford High School
Lab Furniture Shown: Science Lab Countertops
Top Material: Phenolic Resin (Lab Grade - Carbon Black)
- 17. Customer:** Huvepharma, Inc.
Lab Furniture Shown: Proteus Tables (lab islands), Mobile Cabinets
Top Material: Epoxy Resin (Graphite)
Color: White (RAL 9016)

PROJECT DESCRIPTIONS

18. **Customer:** Lee College
Lab Furniture Shown: Custom Workbenches, Custom Student Tables
Top Material: Epoxy Resin (Black Onyx)
Color: Window Grey (RAL 7040)
19. **Customer:** Kraton Polymers
Lab Furniture Shown: Custom Lab Table, Plastic Laminate Casework
Top Material: Phenolic Resin (Lab Grade - Atlantis D25-60)
Color: Wilsonart Alabaster D431-60
20. **Customer:** Mine Survival, Inc.
Lab Furniture Shown: Custom Mass Spec Bench (Stainless Steel)
Top Material: Maple Block
21. **Customer:** The University of North Florida
Lab Furniture Shown: Custom ESD Workbenches
Top Material: ESD Laminate (Cloud Nebula)
Color: Window Grey (RAL 7040)
22. **Customer:** R&D Lab
Lab Furniture Shown: Fixed Lab Islands with Reagent Shelving, Lab Casework, Tall Storage
Flammable Cabinet, Epoxy Resin Drying Rack, Sink Cabinets
Top Material: Epoxy Resin (Black Onyx)
Color: Window Grey (RAL 7040)
23. **Customer:** Biotechnology Lab
Lab Furniture Shown: Lab Casework, Fume Hood, Fixed Lab Island with Shelving System
Sink Cabinets, Epoxy Resin Drying Rack
Top Material: Epoxy Resin (Black Onyx)
Color: White (RAL 9016)
24. **Customer:** Siplast, Inc.
Lab Furniture: Lab Casework, Fixed Workstations, Stainless Steel Drying Rack, Sink Cabinets
Top Material: Phenolic Resin (Lab Grade - Carbon Black & Durcon Graphite)
Color: Light Grey Gloss (RAL 7035)
25. **Customer:** Sterling Creek Builders
Industrial Furniture Shown: Plastic Laminate Casework
Top Material: Wilsonart Laminate (Zebrawood 7980)
Color: Wilsonart Zebrawood 7980
26. **Customer:** Brewer Dental Lab
Commercial Furniture Shown: Tables, Casework with Laminate Fronts
Top Material: Epoxy Resin (Black Onyx), Phenolic Resin (Standard Grade - Black)
Colors: Basalt Grey (RAL 7012), Window Grey (RAL 7040), Laminate Fronts (Untold Journey)
27. **Customer:** Bayport Laboratories, LLC
Lab Furniture Shown: Custom Lab Islands with Reagent Shelving
Top Material: Phenolic Resin (Lab Grade - Carbon Black)
Color: White Gloss (RAL 9016)
28. **Customer:** Andrews County Jail
Industrial Furniture Shown: Metal Casework
Top Material: Stainless Steel
Color: Gentian Blue (RAL 5010)
29. **Customer:** New York Institute of Technology
Lab Furniture Shown: Lab Casework, Fume Hoods, Fixed Lab Island with Modular Shelving
Sink Cabinet, Epoxy Resin Drying Rack
Top Material: Epoxy Resin (Black Onyx)
Color: Stone Grey (RAL 7030)
30. **Customer:** DZI Construction Services, Inc.
Lab Furniture Shown: Fixed Lab Island with Modular Shelving, Workbenches, Sink Cabinet, Stainless Steel Sink
Top Material: Phenolic Resin (Lab Grade - Carbon Black)
Color: White (RAL 9016)
31. **Customer:** Boise State University
Lab Furniture Shown: Plastic Laminate Casework, Fume Hood, Epoxy Resin Drying Rack
Top Material: Epoxy Resin (Graphite)
Color: Amber Maple Color (Plastic Laminate), E-2731 Platinum (Fume Hood)

PROJECT DESCRIPTIONS

32. **Customer:** Baylor University
Lab Furniture Shown: Custom Workbenches, Custom Student Tables, Casework, Fume Hood, Wall Shelving
Top Material: Epoxy Resin (Black Onyx)
Color: Window Grey (RAL 7040)
33. **Customer:** Costco Wholesale
Lab Furniture Shown: Plastic Laminate Casework
Top Material: Wilsonart Laminate (Designer White D354-60)
Color: Wilsonart Veranda Teak 9209k-28
33. **Customer:** Costco Wholesale
Lab Furniture Shown: Plastic Laminate Casework
Top Material: Wilsonart Solid Surface (Arctic Dune - 9253CM)
Color: Wilsonart Slate Grey D91-60
35. **Customer:** Orion Laboratories
Lab Furniture Shown: Mobile Lab Tables, Mobile Lab Tables with Suspended Cabinets, Mobile Lab Workbenches with Suspended Cabinets & Modular Shelving, Wall Shelving, Metal Casework, Epoxy Resin Sink, Stainless Steel Pegboard
Top Material: Phenolic Resin (Lab Grade - Glacier White)
Color: White (RAL 9016)
36. **Customer:** Elgin High School
Lab Furniture Shown: Plastic Laminate Casework
Top Material: Used Existing Countertops
Color: Wilsonart Veranda Teak 8209K-28
37. **Customer:** Intrepid Build, LLC
Lab Furniture Shown: Flex Systems with Modular Shelving & Suspended Cabinets, Wall Shelving, Base Cabinets, Epoxy Resin Sink, Stainless Steel Pegboard
Top Material: Phenolic Resin (Lab Grade - Carbon Black)
Color: White (RAL 9016)
38. **Customer:** BND Architectural Woodwork, LLC
Lab Furniture: Plastic Laminate Casework
Top Material: Phenolic Resin (Lab Grade - Carbon Black), Formica Poloma Polar - 6698-58 (matte finish)
Color: Formica Charrared Formwood - 6416-NT (naturelle finish), Formica Fox Teakwood - 8907-MG (natural grain finish), Wilsonart Ruskin Oak - 17001K-57 (aligned texture finish)
39. **Customer:** Commerce Cafe
Commercial Furniture Shown: Custom Stainless Steel Countertop
Top Material: Stainless Steel
40. **Customer:** Scribe Therapeutics
Commercial Furniture Shown: Plastic Laminate Casework
Top Material: Provided by Other Third Party
Colors: Finished Walnut Veneer MDF
41. **Customer:** Alphawave
Lab Furniture Shown: Custom ESD Workbenches
Top Material: ESD Laminate (White)
Color: White (RAL 9016)
42. **Customer:** Edgley Construction Group, Inc.
Laboratory Furniture Shown: Fixed Lab Islands, Modular Shelving, Lab Cabinets, Wall Shelving, Stainless Steel Drying Racks, Epoxy Resin Sinks
Top Material: Epoxy Resin (Black Onyx)
Color: White (RAL 9016)

1112 Swenson Blvd, Elgin, TX 78621
(866) 613-7312
www.onepointesolutions.com