

MASS SPEC BENCHES

WORKSTATIONS FOR MASS SPEC,
HPLC & GC INSTRUMENTS

(866) 612-7312

INFO@ONEPOINTESOLUTIONS.COM

 **ONEPOINTE SOLUTIONS**

Overview

We provide custom-tailored solutions for complex lab instrumentation including Mass Spectrometry/LC/GC/HPLC equipment. MS instruments from the leading industry brands require custom enclosures and accessories.



Agilent



We partner and work directly with each of these brands to design the highest-quality carts and tables for their instruments. If you have an instrument shipping soon, we can rush order a specialized bench or cabinet to house it.

Mass Spec Bench Options



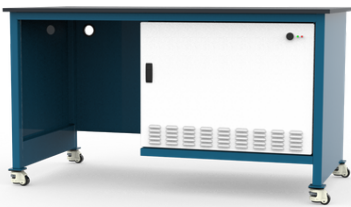
Basic Instrument Cart

Features Include:

- 1" Lab Grade Phenolic Resin (Black)
- Pull Out & Locking Pump Tray
- Sound Dampening Foam
- GDR Casters
- Temperature Sensors, Fans, Alarm, Power Supply & LED Lights
- Full Depth Lower Shelf (only for 48" width)

Bench Sizes (in):

- Height - 30", 33", 36"
- Width - 36", 48"
- Depth - 34"



Extended Instrument Cart

Features Include:

- 1" Lab Grade Phenolic Resin (Black)
- Pull Out & Locking Pump Tray
- Sound Dampening Foam
- Temperature Sensors, Fans, Alarm, Power Supply & LED Lights
- GDR Casters
- Suspended Cabinet
- Option For Monitor Arm

Bench Sizes (in):

- Height - 30", 33", 36"
- Width - 60", 72", 84", 96"
- Depth - 34"



HPLC/GC Cart

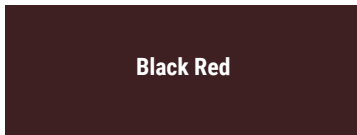
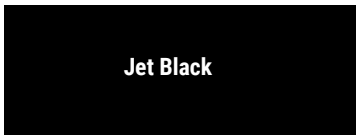
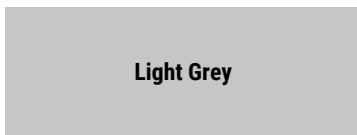
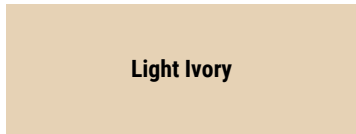
Features Include:

- 1" Lab Grade Phenolic Resin (Black)
- Pull Out & Locking Pump Tray
- Sound Dampening Foam
- Temperature Sensors, Fans, Alarm, Power Supply & LED Lights
- GDR Casters
- Pull Out Liquid Waste Tray
- Option For Gas Cylinder
- Option For Monitor Arm
- Option For Suspended Cabinet

Bench Sizes (in):

- Height - 30", 33", 36"
- Width - 60", 72", 84", 96"
- Depth - 34"

Color Options



Thank You.

Give us a call at (866) 612-7312 or email info@onepointesolutions.com for help selecting the right mass spec bench for your lab.

(866) 612-7312

INFO@ONEPOINTESOLUTIONS.COM

 ONEPOINTE SOLUTIONS