

ONEPOINTE SOLUTIONS

PRESENTS

PRODUCT INSTRUCTIONS



HOW TO GUIDES TO SUCCESSFULLY AND EFFICIENTLY
INSTALL OUR PRODUCTS

FUME HOOD

FOR 100-500 & HP SERIES HOODS



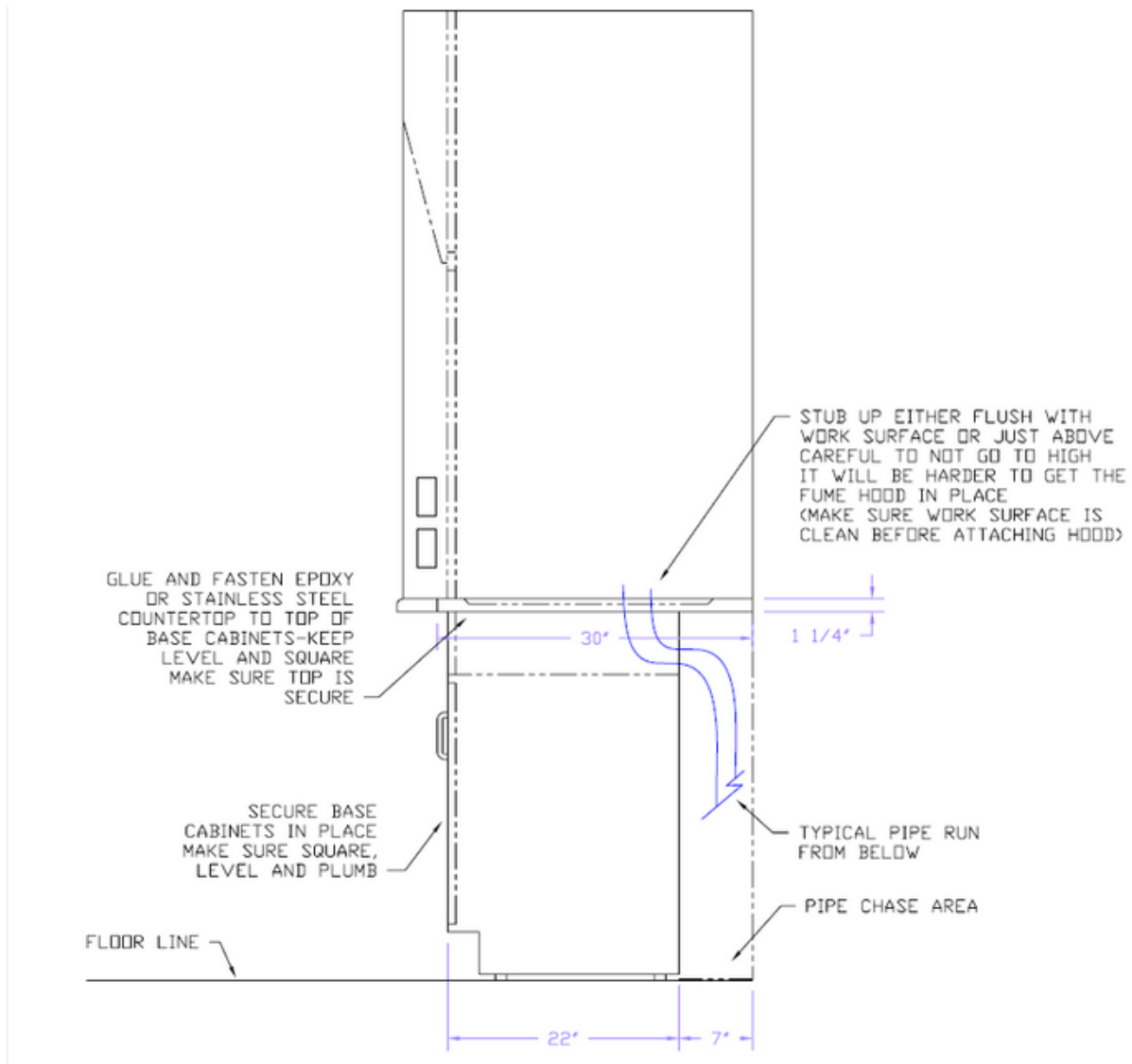
FUME HOOD ASSEMBLY

STEP 1.

Rough-in plumbing and power where required.

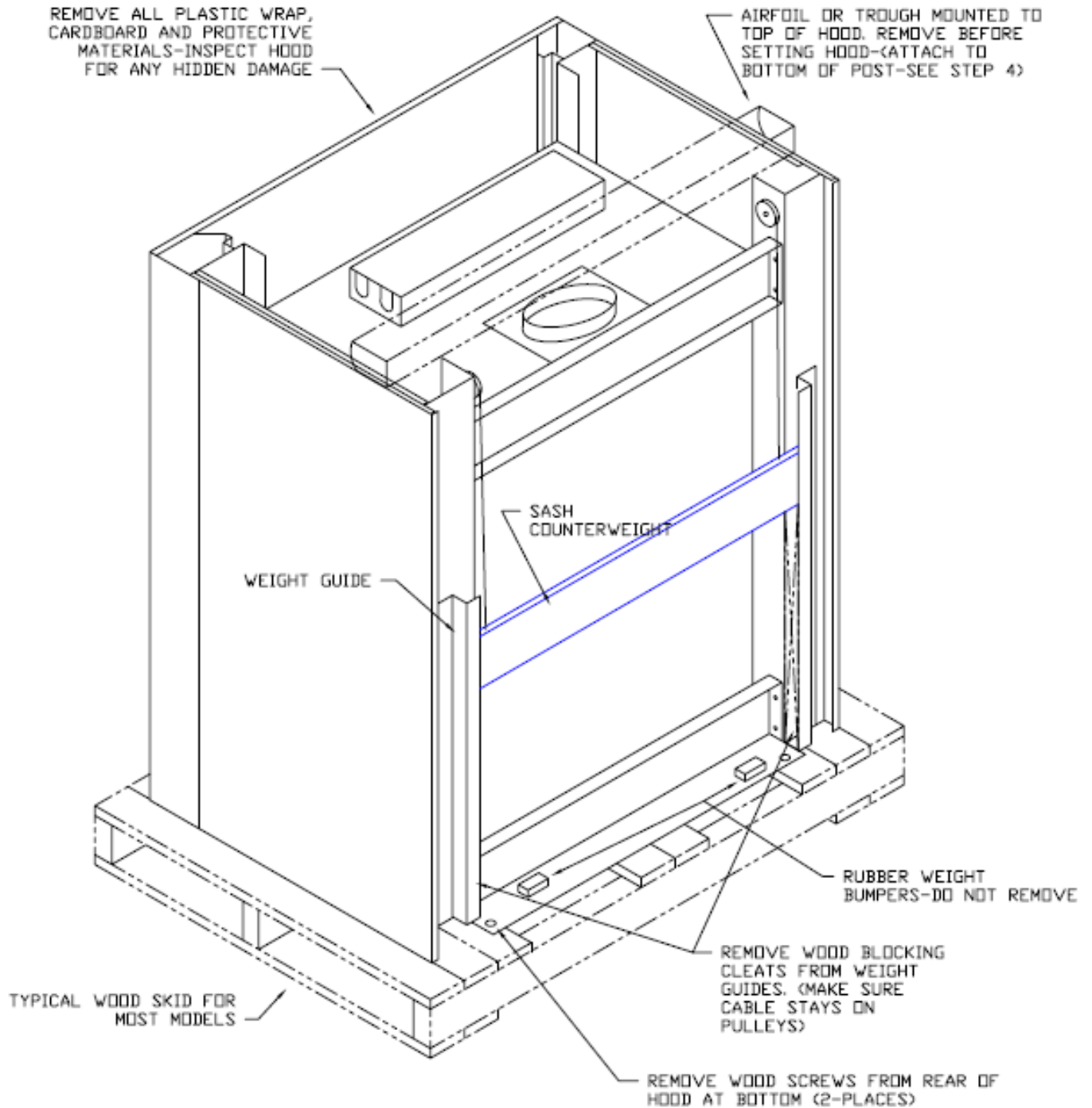
STEP 2.

Set cabinetry and work surfaces



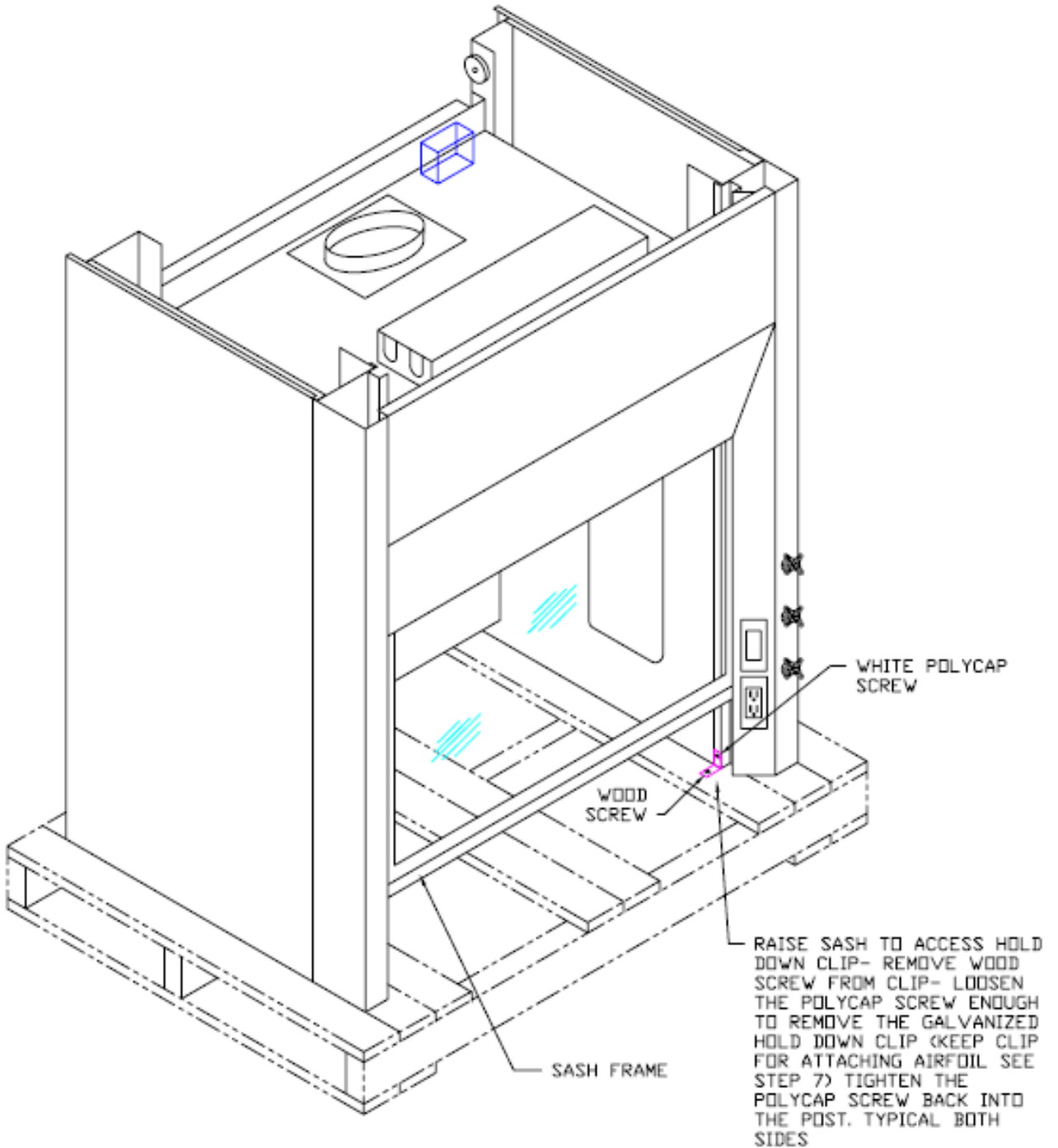
FUME HOOD ASSEMBLY

STEP 3. Skid removal/unpacking



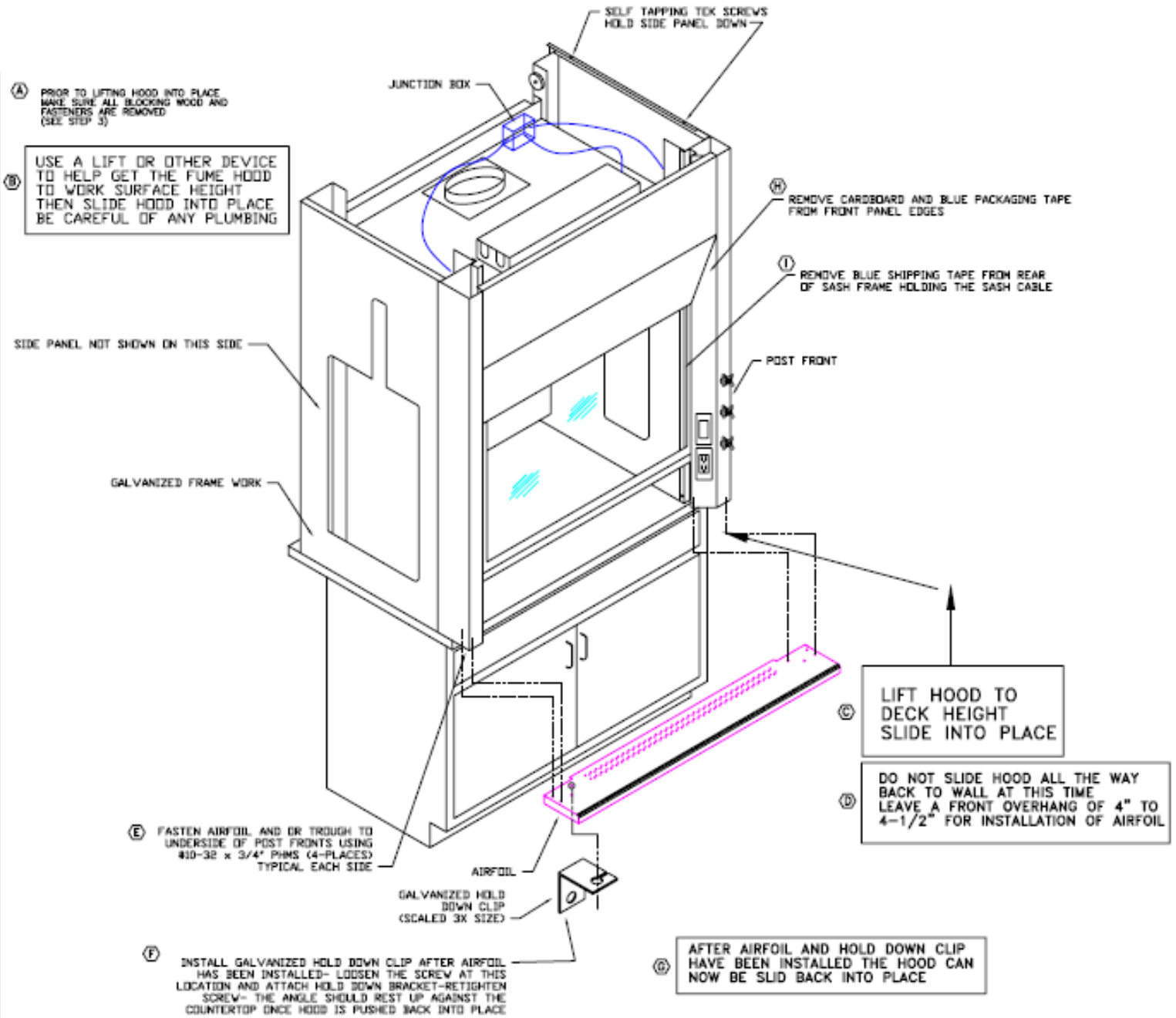
FUME HOOD ASSEMBLY

STEP 3A. Skid removal/unpacking



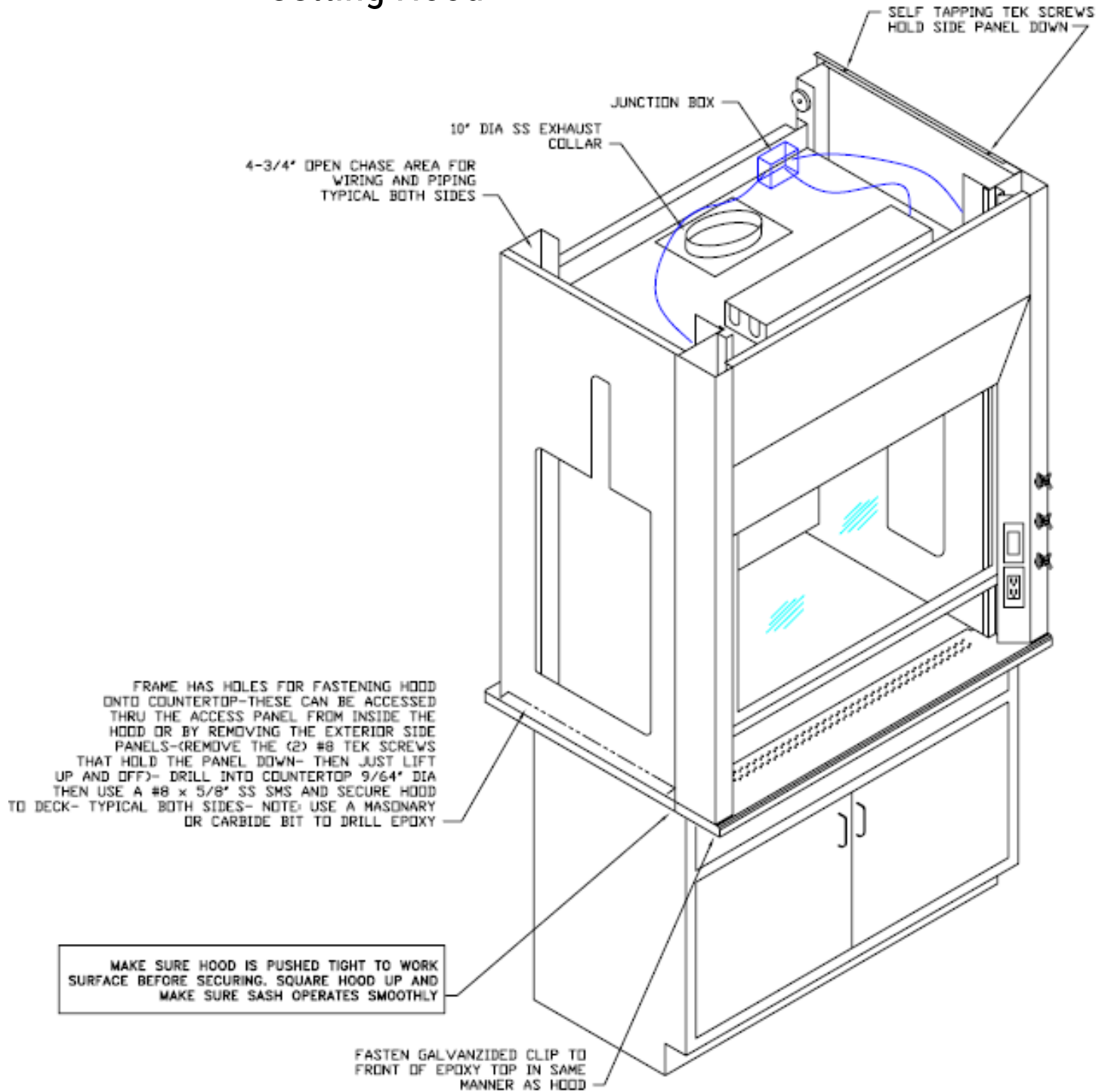
FUME HOOD ASSEMBLY

STEP 4. Setting Hood



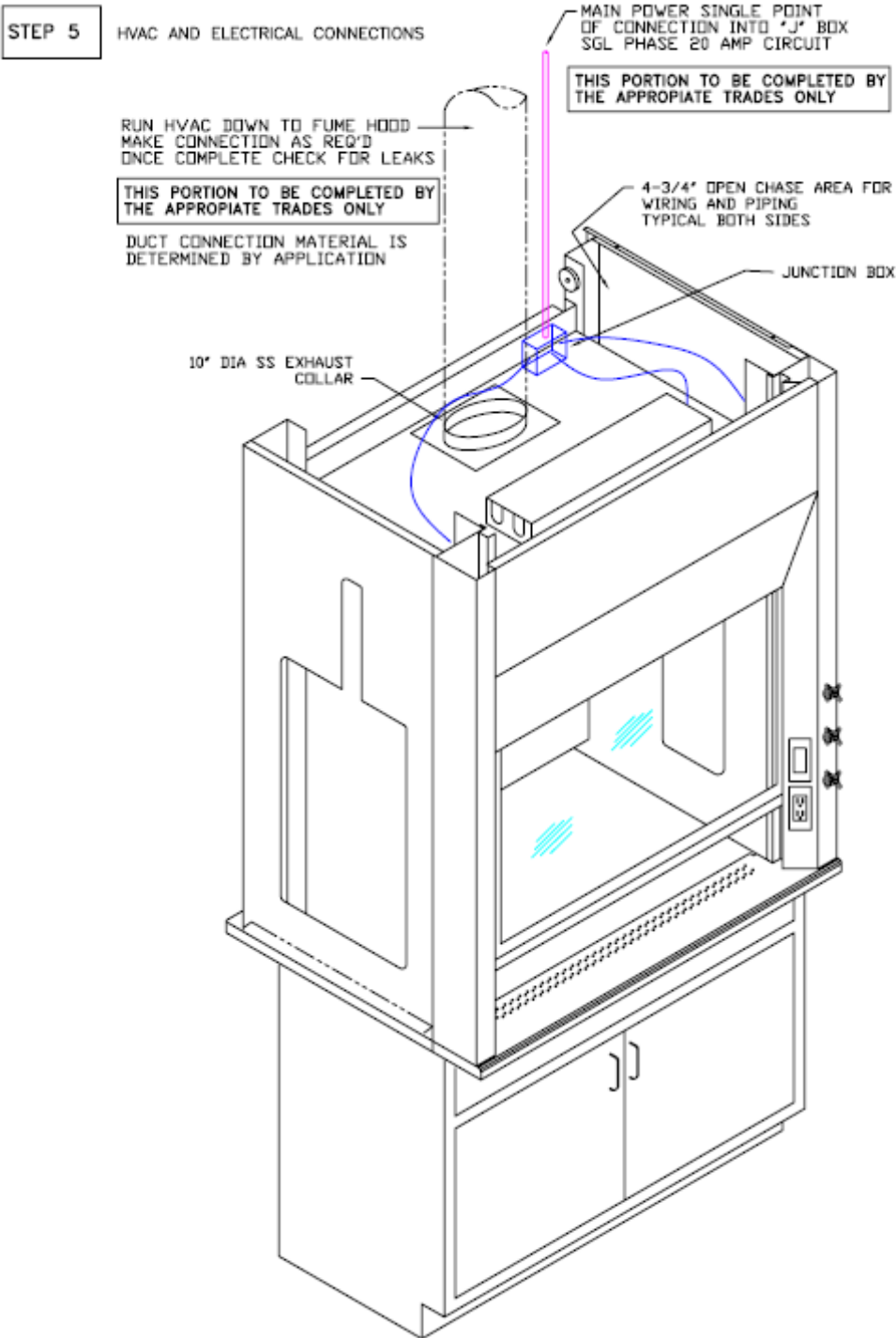
FUME HOOD ASSEMBLY

STEP 4A. Setting Hood



FUME HOOD ASSEMBLY

STEP 5. HVAC and Electrical Connections



FUME HOOD ASSEMBLY

STEP 6. Plumbing Connections

THIS PORTION IS TO BE COMPLETED BY THE APPROPRIATE TRADES ONLY

FOR PRE-PIPED FUME HOODS

GENERAL INFORMATION:

FUME HOOD SERVICE LINE CONNECTIONS FOR WATER, WASTE, GAS, AIR, VACUUM AND OTHERS WILL VARY, DEPENDING ON THE POINT OF ORIGIN AND NUMBER OF SERVICES BEING PROVIDED.

SERVICES MAY BE BROUGHT UP FROM BELOW, OR DOWN THRU THE CEILING INTO THE FUME HOOD CHASE AREA.

PRODUCT INFORMATION:

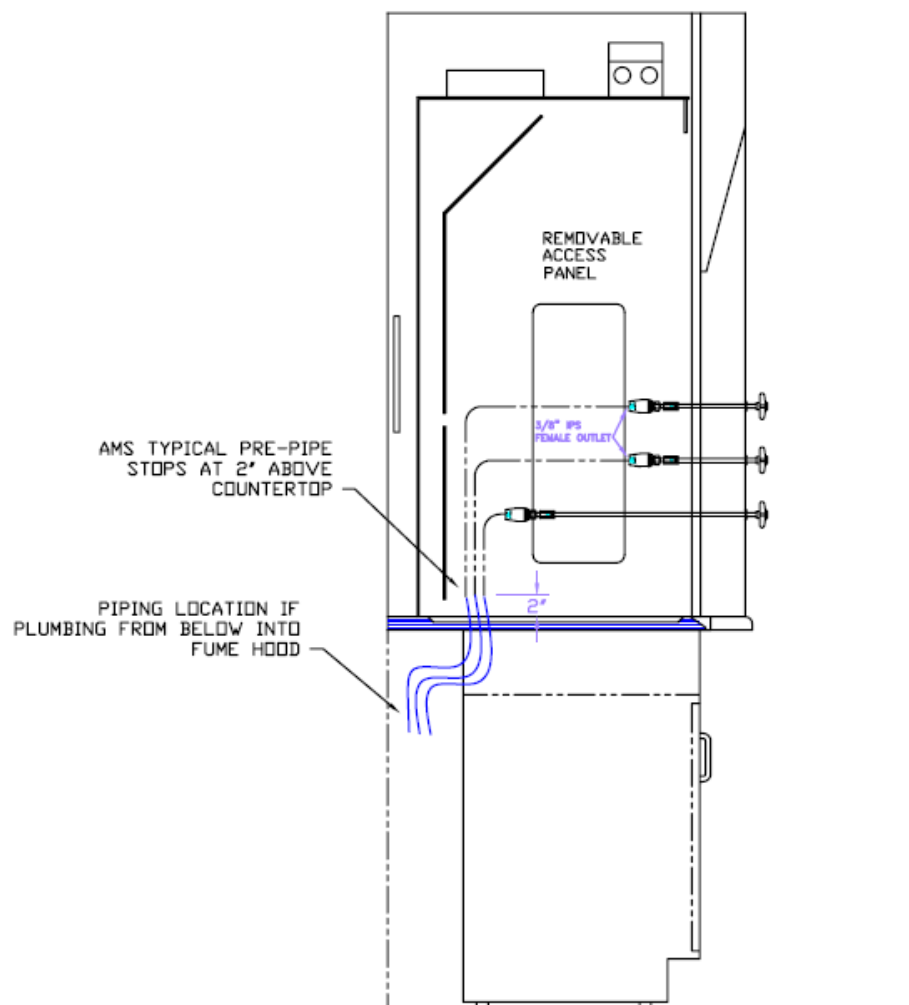
PRE-PIPING OF FUME HOODS INCLUDE PLUMBING FROM VALVE TO ELBOW OR TO TOP OR BOTTOM OF HOOD AS INDICATED.

PIPING MATERIAL IS AS FOLLOWS:
WATER PIPE- 1/2" COPPER TUBING
AIR PIPE- 1/2" COPPER TUBING
GAS PIPE- 3/8" BLACK IRON
VACUUM PIPE- 1/2" COPPER TUBING

INSTALLATION INFORMATION:

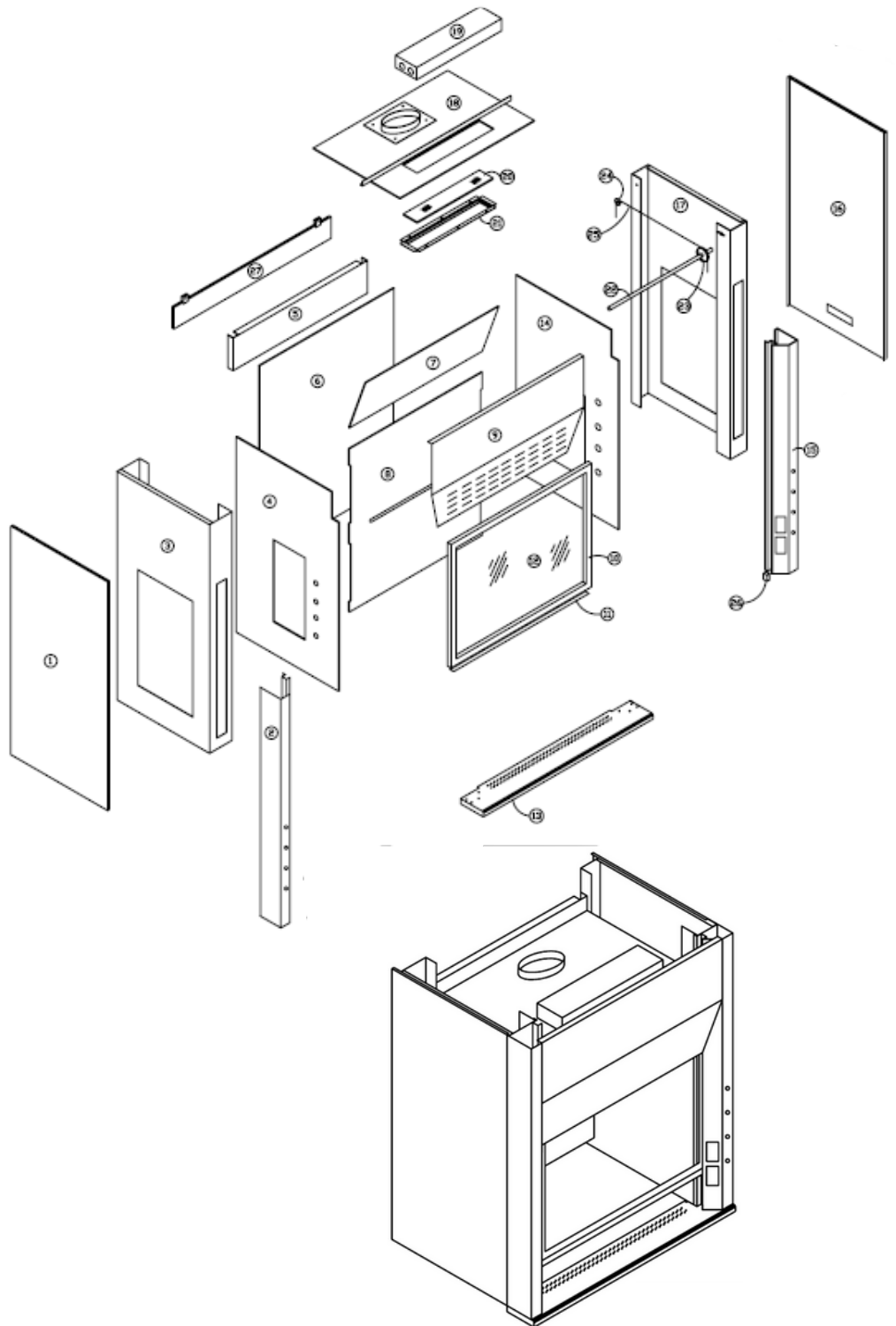
PIPING AND CONNECTORS FOR FINAL CONNECTION TO BUILDING LINES ARE NOT FURNISHED. BECAUSE OF CODE REQUIREMENTS THEY SHOULD BE SUPPLIED BY RESPECTIVE TRADES.

EXTERIOR SIDE PANELS MAY BE REMOVED FOR EASE OF PLUMBING CONNECTIONS
REPLACE AFTER MAKING CONNECTIONS AND TESTING THE SYSTEM FOR LEAKS



FUME HOOD ASSEMBLY

PARTS LIST FOR EH 111 STYLE HOODS	
1	LH EXTERIOR METAL SIDE PANEL
2	LH POST FRONT
3	LH FRAME STRUCTURAL SUPPORT
4	LH INTERIOR POLYRESIN SIDE PANEL
5	TOP REAR REINFORCEMENT
6	POLYRESIN BACK PANEL
7	UPPER POLYRESIN BAFFLE
8	LOWER POLYRESIN BAFFLE
9	FRONT PANEL
10	TUBE SASH FRAME
11	BOTTOM FINGER LIFT
12	1/4" CLEAR LAMI SAFETY GLASS
13	AIRFOIL
14	RH INTERIOR POLYRESIN SIDE PANEL
15	RH POST FRONT
16	RH EXTERIOR METAL SIDE PANEL
17	RH FRAME STRUCTURAL SUPPORT
18	POLYRESIN TOP PANEL
19	2-TUBE T-8 FLUORESCENT LIGHT
20	1/4" CLEAR LAMI LIGHT GLASS
21	LIGHT GLASS FRAME
22	STAINLESS STEEL CABLE SHAFT
23	FRONT SHEAVE
24	2" DIA NYLON PULLEY
25	7x7 STEEL COATED SASH CABLE
26	RUBBER BUMPER (FOR SASH)
27	SASH COUNTERWEIGHT



CONTACT INFORMATION

For any questions or concerns contact us

(866) 612-7312

info@onepointesolutions.com

1112 Swenson Blvd.

Elgin, Texas 78621

