

ONEPOINTE SOLUTIONS

PRESENTS

PRODUCT INSTRUCTIONS



HOW TO GUIDES TO SUCCESSFULLY AND EFFICIENTLY
INSTALL OUR PRODUCTS

CABINET INSTALLTION



CABINET INSTALLATION

WHAT YOU WILL NEED

3X



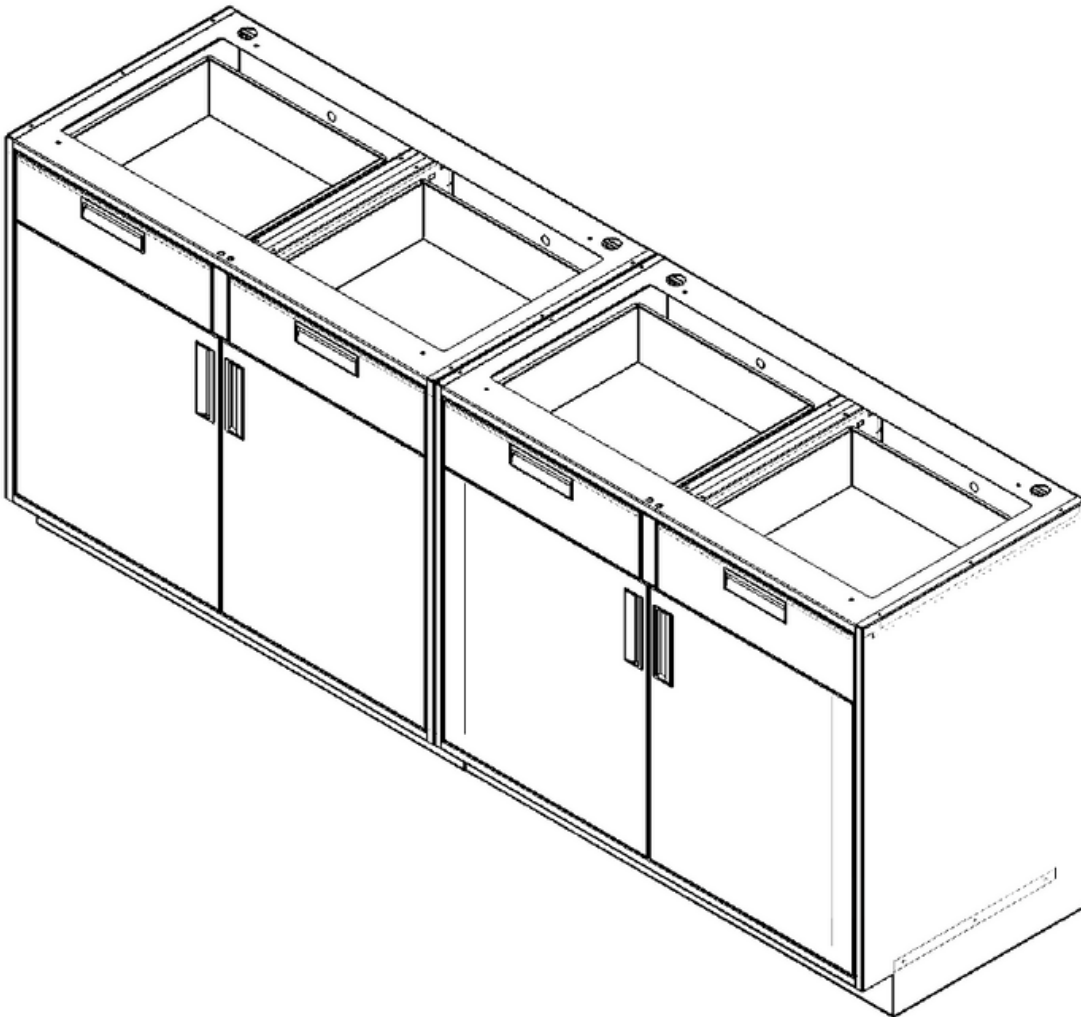
#10X 3/4" HEX
HEAD SELF
DRILLING SCREW



5/16 NUT
DRIVER

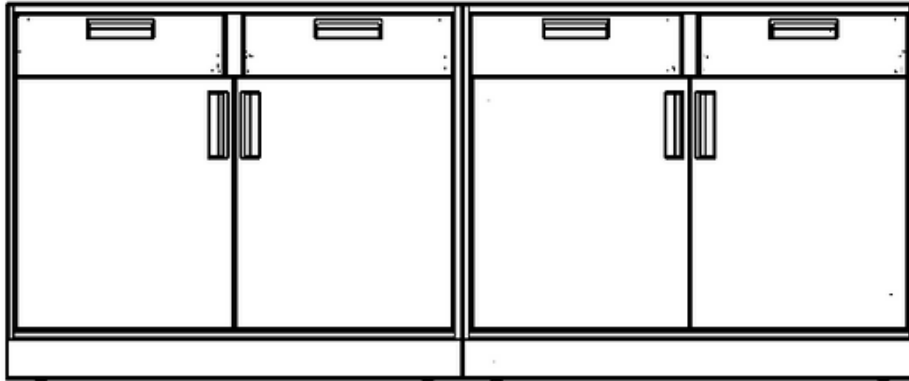


12" IMPACT
EXTENSION



CABINET INSTALLATION

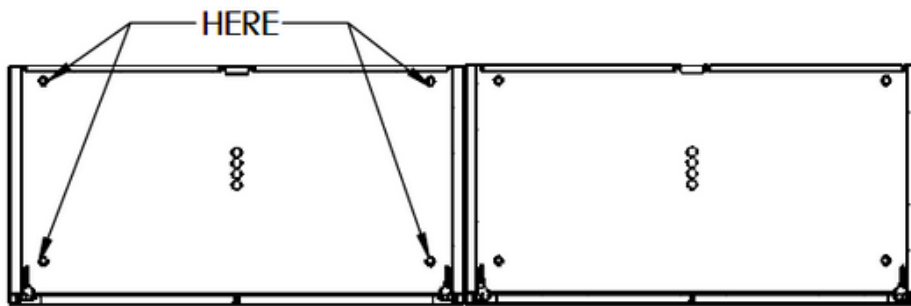
CABINET TO CABINET



PLACE CABINETS IN THEIR DESIGNATED POSITIONS.



12" IMPACT
EXTENSION

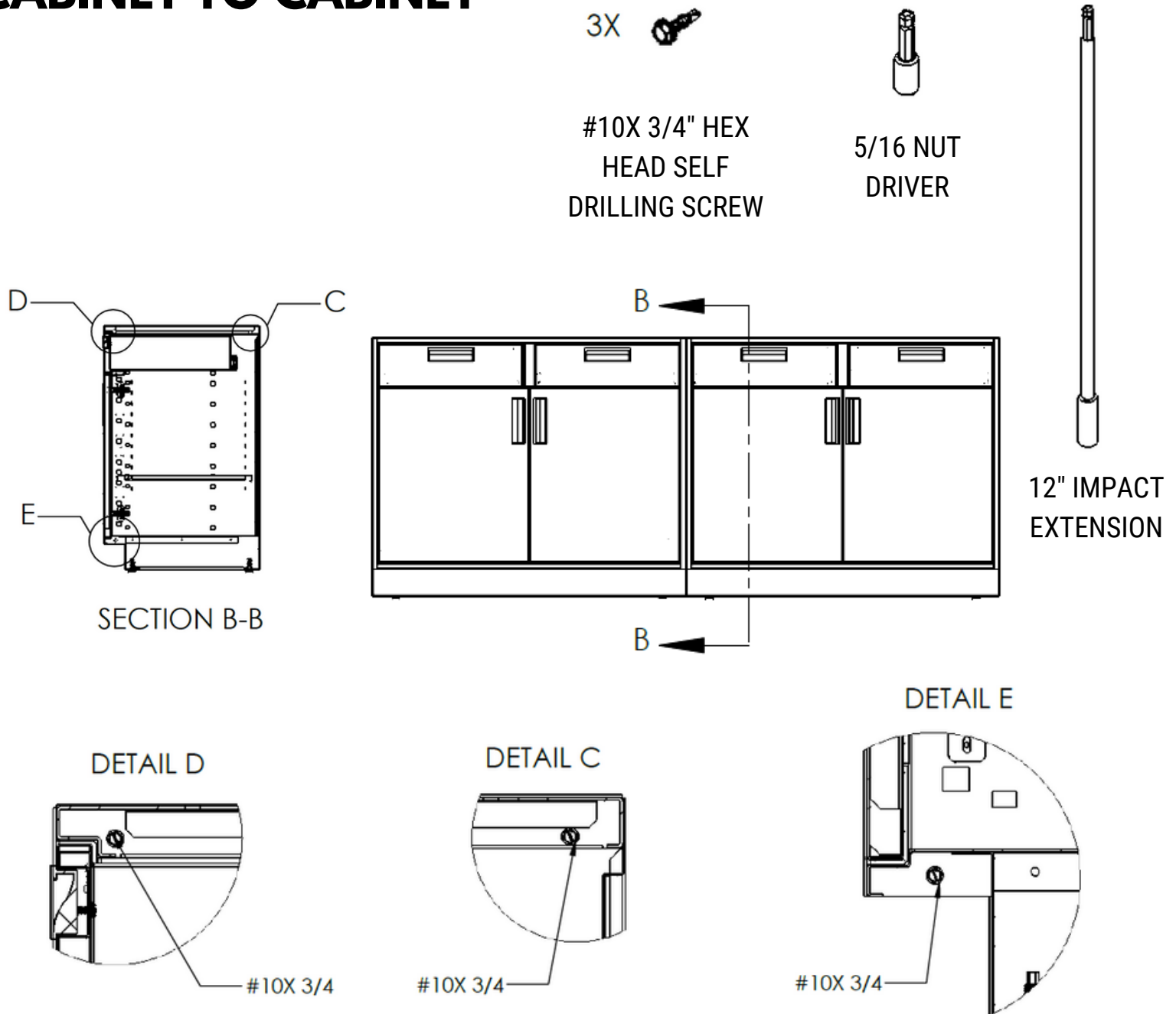


LEVEL CABINETS BY PLACING IMPACT WITH EXTENSION THROUGH THE
LEVELER HOLES. RIGHT WILL RAISE LEVELER LEFT WILL LOWER LEVELER



CABINET INSTALLATION

CABINET TO CABINET



WHEN CABINETS ARE LINED UP SCREW CABINETS TOGETHER IN SHOWN LOCATIONS



CABINET INSTALLATION

FRONT SCRIBE TO WALL

3X



DRYWALL
SCREW

#2 PHILLIPS
DRIVE



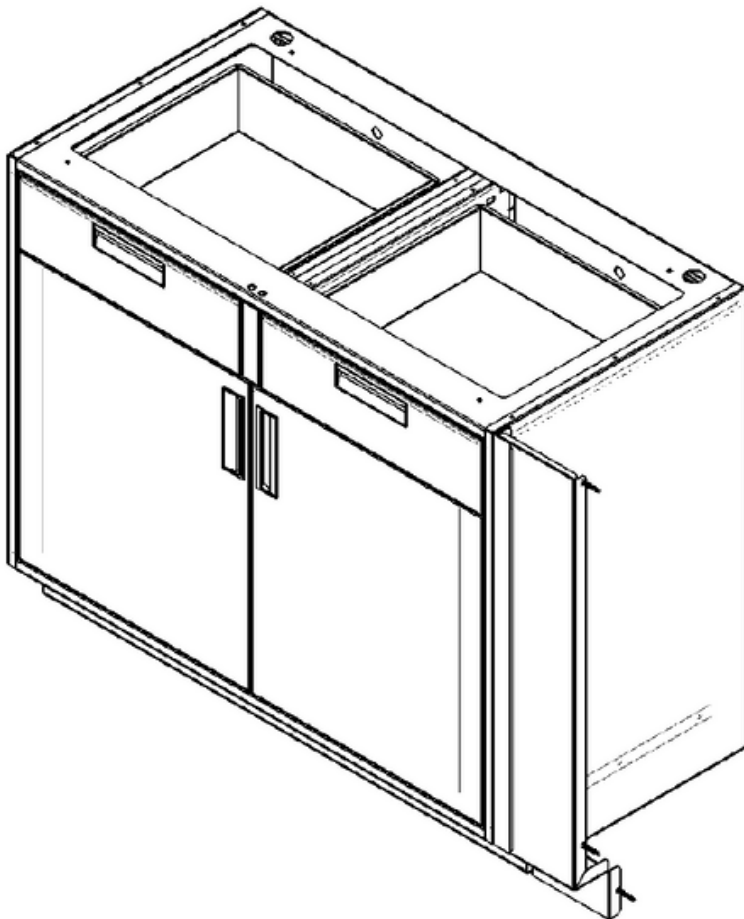
3X



#10X 3/4" HEX
HEAD SELF
DRILLING SCREW



5/16 NUT
DRIVER



CABINET INSTALLATION

CABINET TO FRONT SCRIBE TO WALL

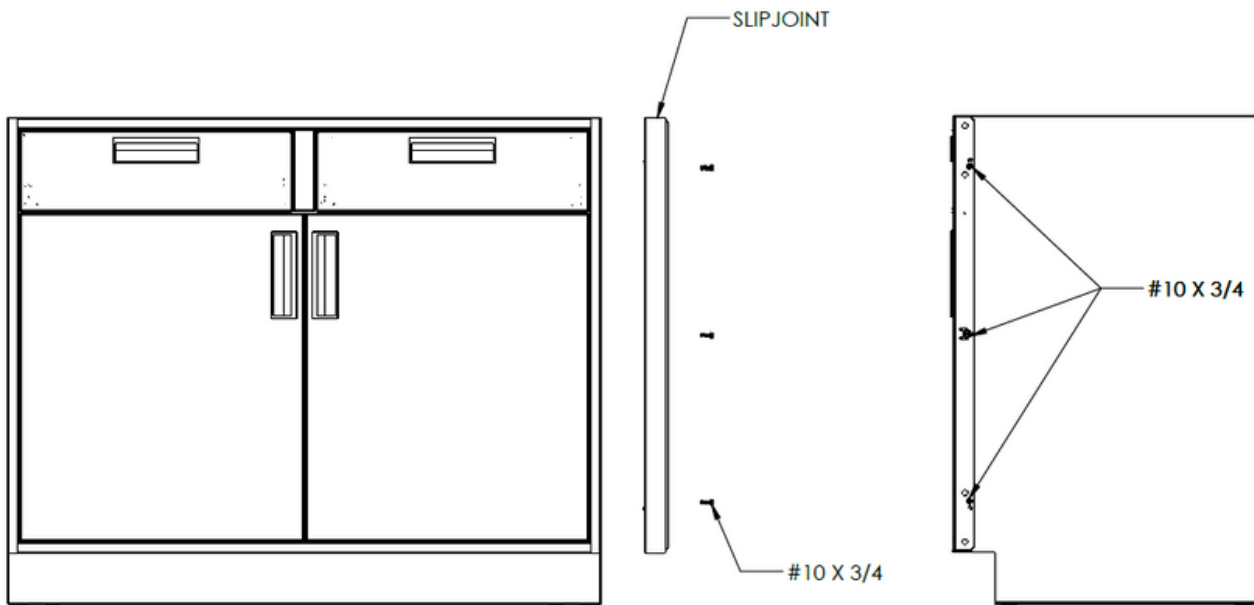
3X



#10X 3/4" HEX
HEAD SELF
DRILLING SCREW



5/16 NUT
DRIVER



PLACE SLIP JOINT FLUSH WITH TOP OF CABINET
USING THREE #10 X 3/4 SELF DRILLING SCREWS ATTACH SCRIBE TO CABINET



CABINET INSTALLATION

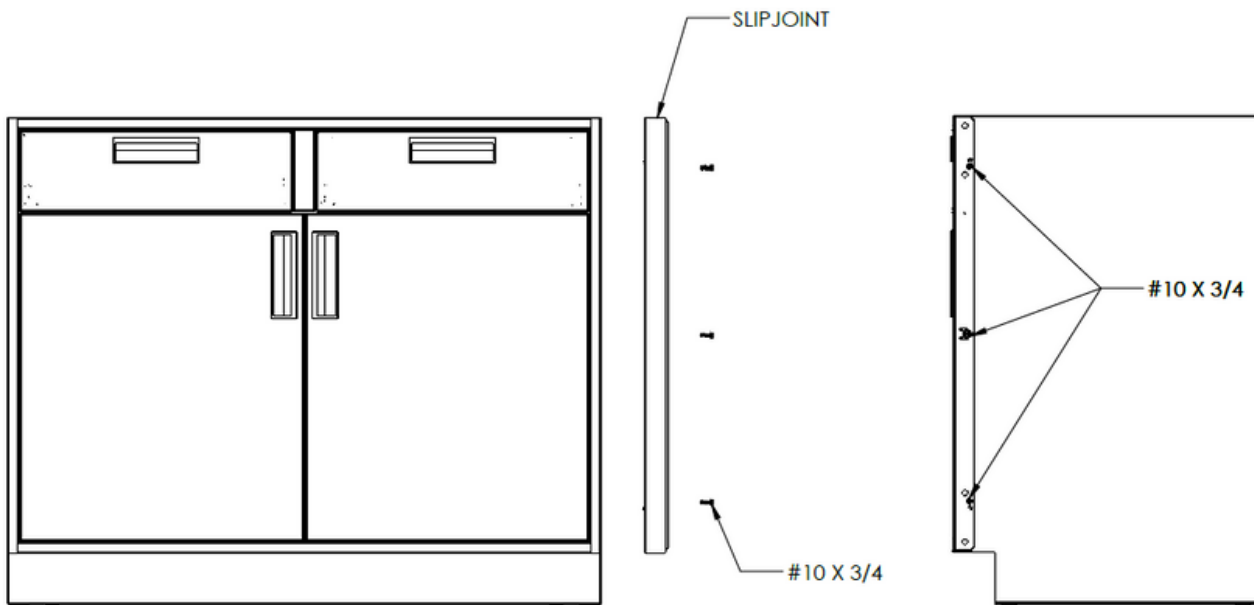
CABINET TO FRONT SCRIBE TO WALL

3X 

DRYWALL
SCREW



#2 PHILLIPS
DRIVE

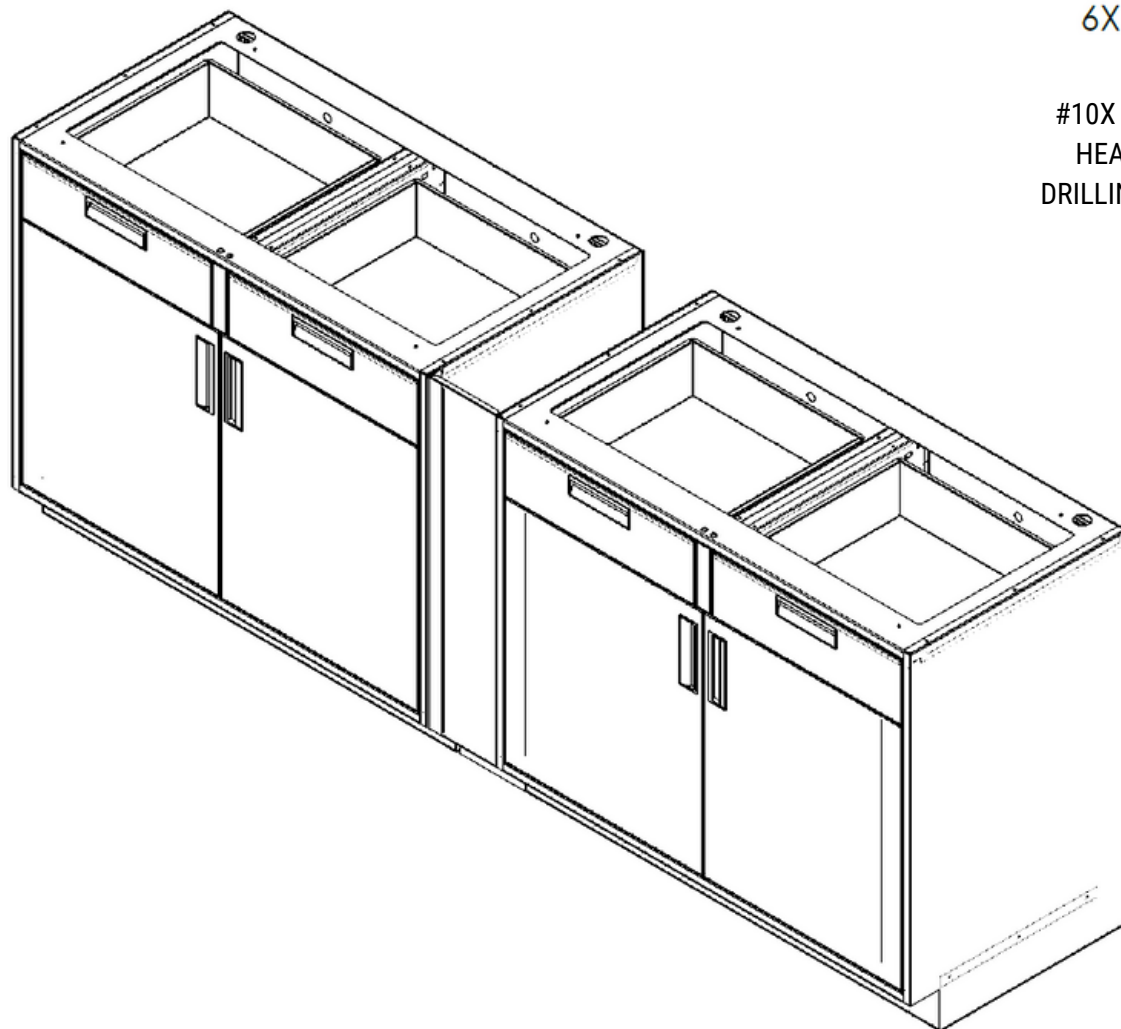


SLIDE FILLER INTO SCRIBE AND AGAINST WALL
USING THREE DRYWALL SCREWS ATTACH FILLER TO WALL



CABINET INSTALLATION

CABINET TO FRONT SCRIBE TO WALL



6X



#10X 3/4" HEX
HEAD SELF
DRILLING SCREW



5/16 NUT
DRIVER



CABINET INSTALLATION

CABINET TO FRONT SCRIBE TO WALL

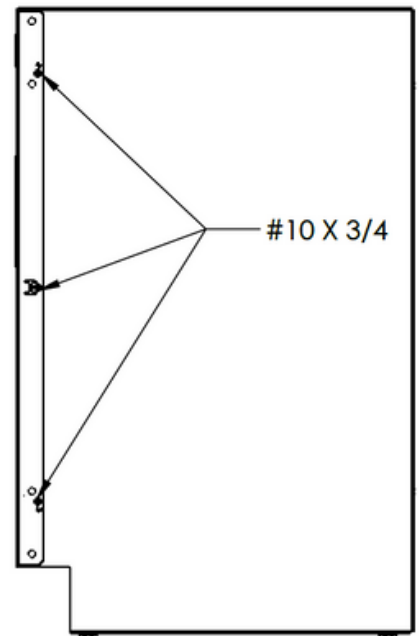
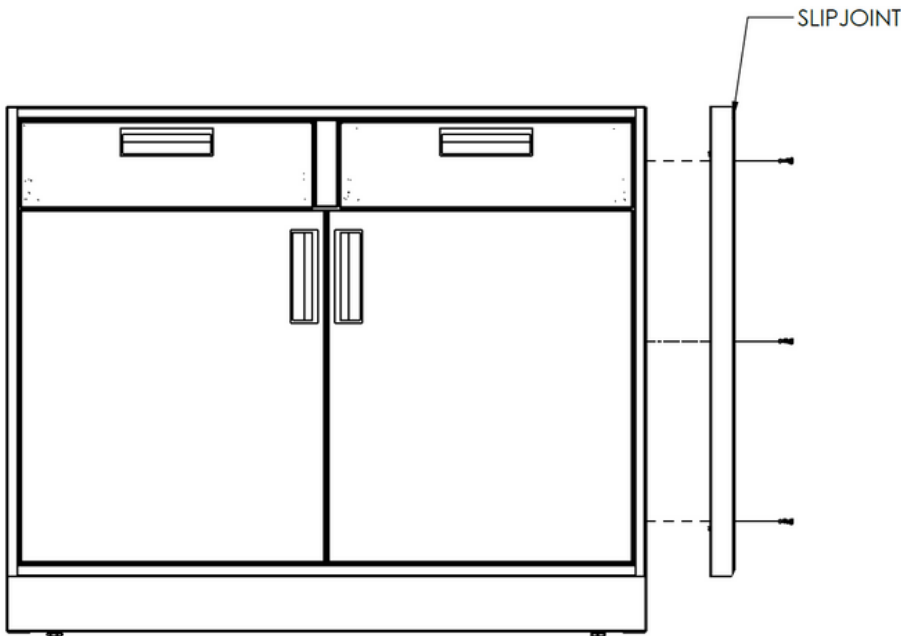
3X



#10X 3/4" HEX
HEAD SELF
DRILLING SCREW



5/16 NUT
DRIVER



PLACE SLIP JOINT FLUSH WITH TOP OF CABINET
USING THREE #10 X 3/4 SELF DRILLING SCREWS ATTACH SCRIBE TO CABINET



CABINET INSTALLATION

CABINET TO FRONT SCRIBE TO WALL

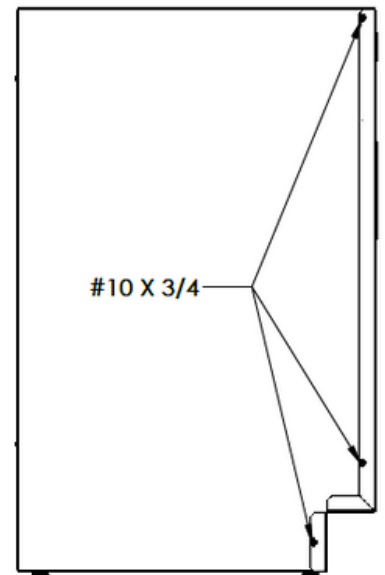
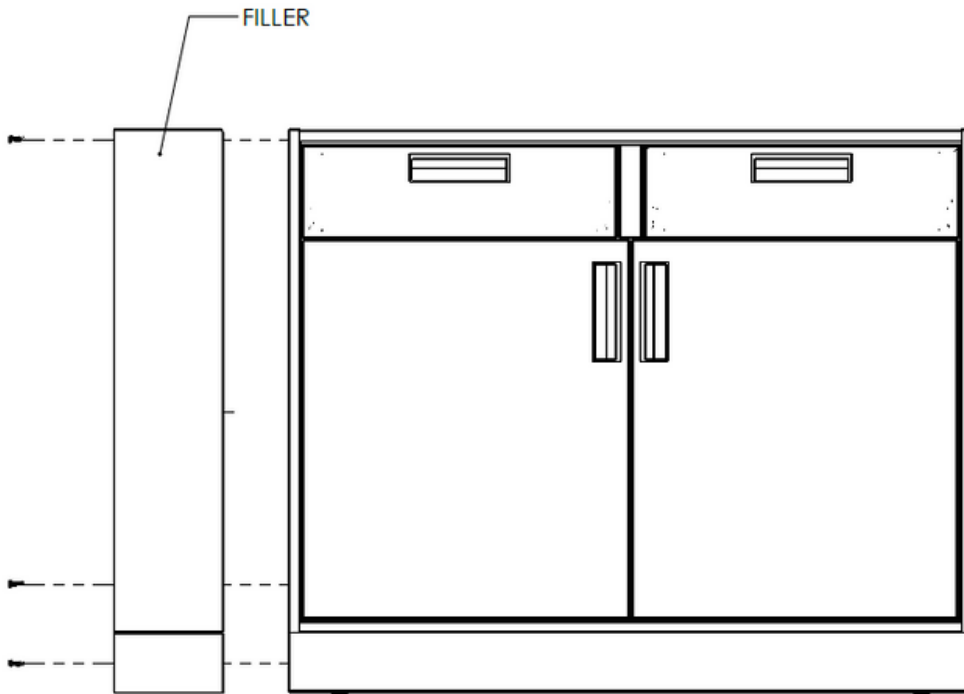
3X



#10X 3/4" HEX
HEAD SELF
DRILLING SCREW



5/16 NUT
DRIVER

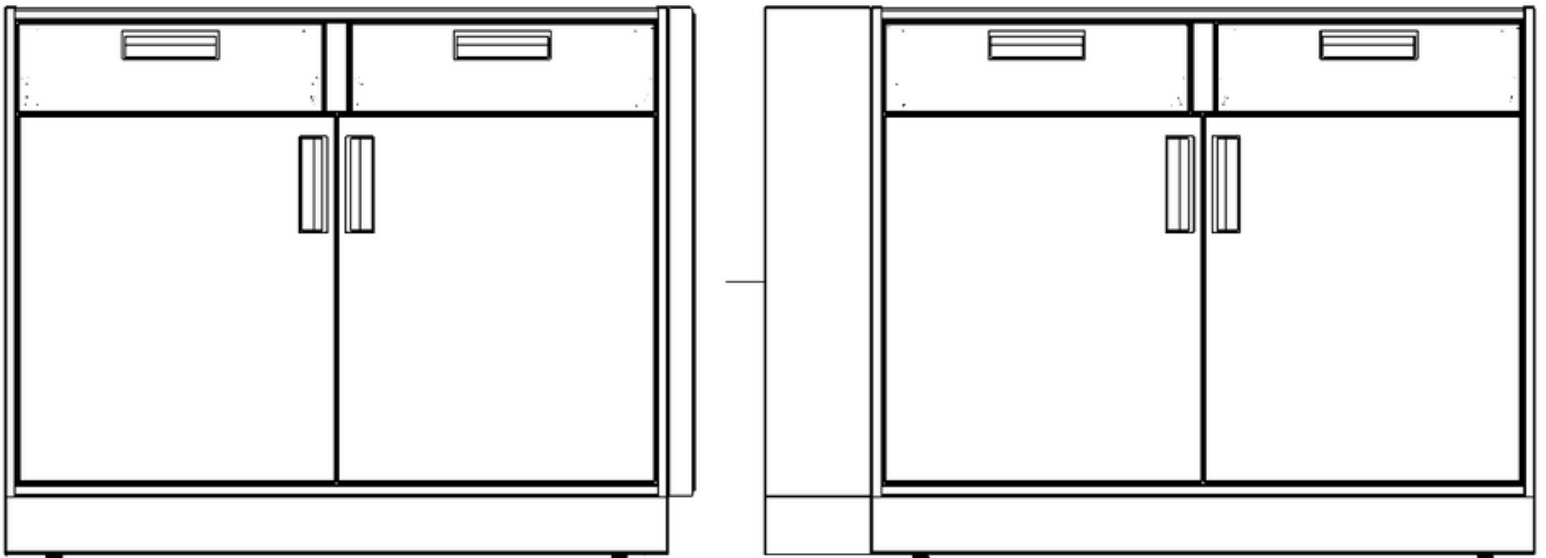


FLUSH FILLER WITH FRONT AND TOP OF CABINET
ATTACH USING THREE #10 X 3/4 SELF DRILLING SCREWS



CABINET INSTALLATION

CABINET TO FRONT SCRIBE TO WALL



WHEN BOTH PARTS OF FRONT SCRIBE ARE ATTACHED SLIDE CABINETS TOGETHER.
MAKE SURE FILLER SLIDES IN BETWEEN THE TWO PARTS PF SLIP JOINT



CABINET INSTALLATION

CABINET TO REAR SCRIBE

3X



DRYWALL
SCREW



#2 PHILLIPS
DRIVE

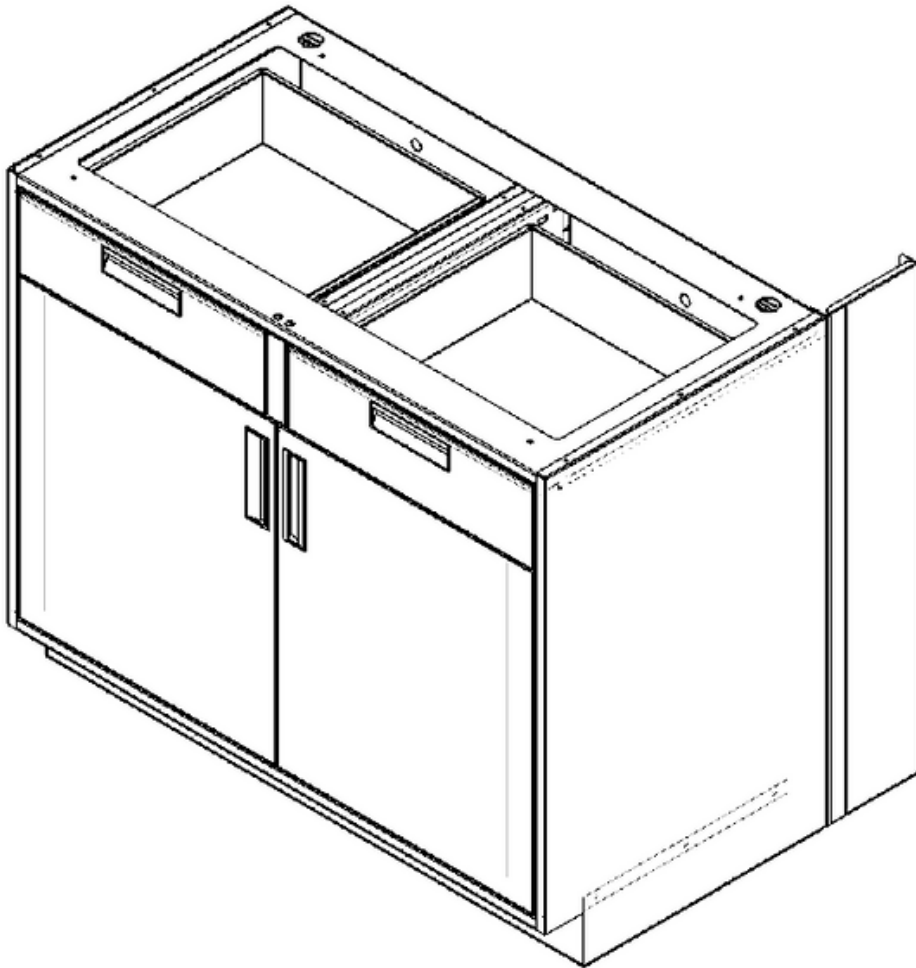
3X



#10X 3/4" HEX
HEAD SELF
DRILLING SCREW



5/16 NUT
DRIVER



CABINET INSTALLATION

CABINET TO REAR SCRIBE

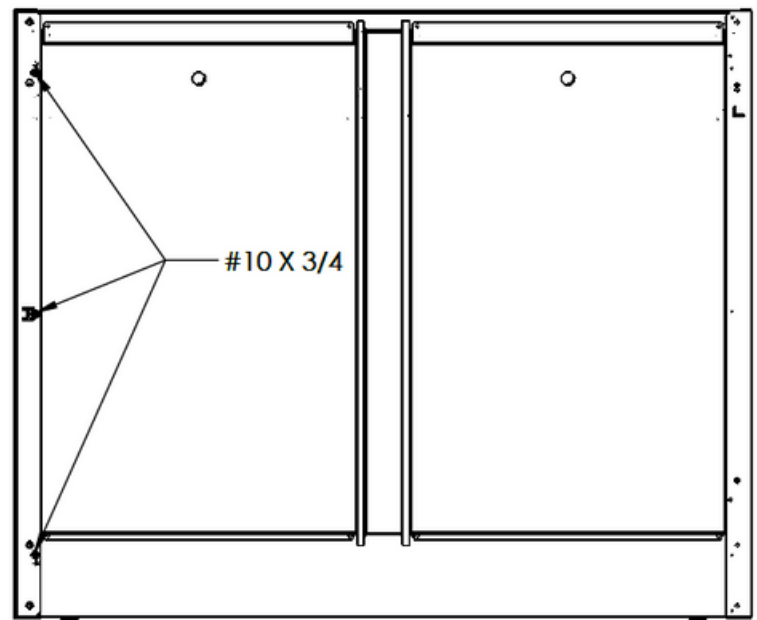
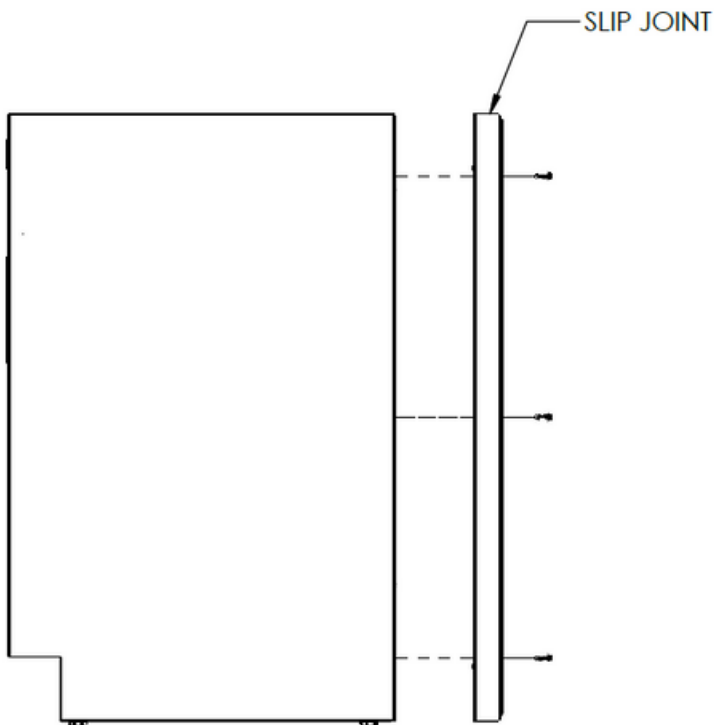
3X



#10X 3/4" HEX
HEAD SELF
DRILLING SCREW



5/16 NUT
DRIVER



PLACE SLIPJOINT FLUSH WITH TOP AND SIDE OF CABINET
USEING THREE #10 X 3/4 SELF DRILLING SCREWS ATTACH SCRIBE TO CABINET



CABINET INSTALLATION

CABINET TO REAR SCRIBE

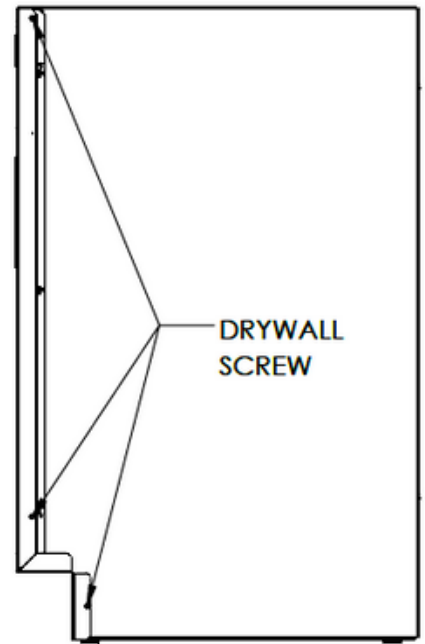
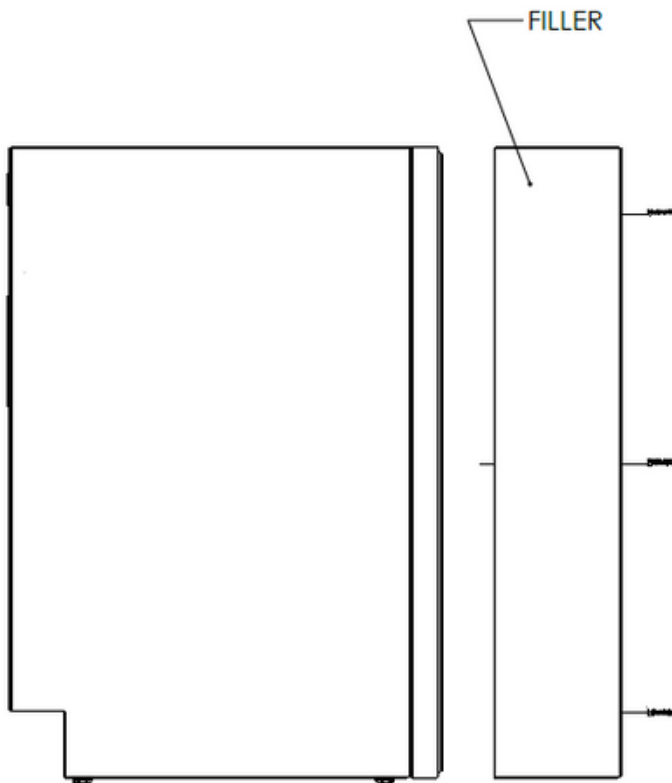
3X



DRYWALL
SCREW



#2 PHILLIPS
DRIVE




SLIDE FILLER INTO SCRIBE AND AGAINST WALL
USEING THREE DRYWALL SCREWS ATTACH FILLER TO WALL
BACK PANEL OF CABINET CAN BE REMOVED FOR EASIER ACCESS



CABINET INSTALLATION

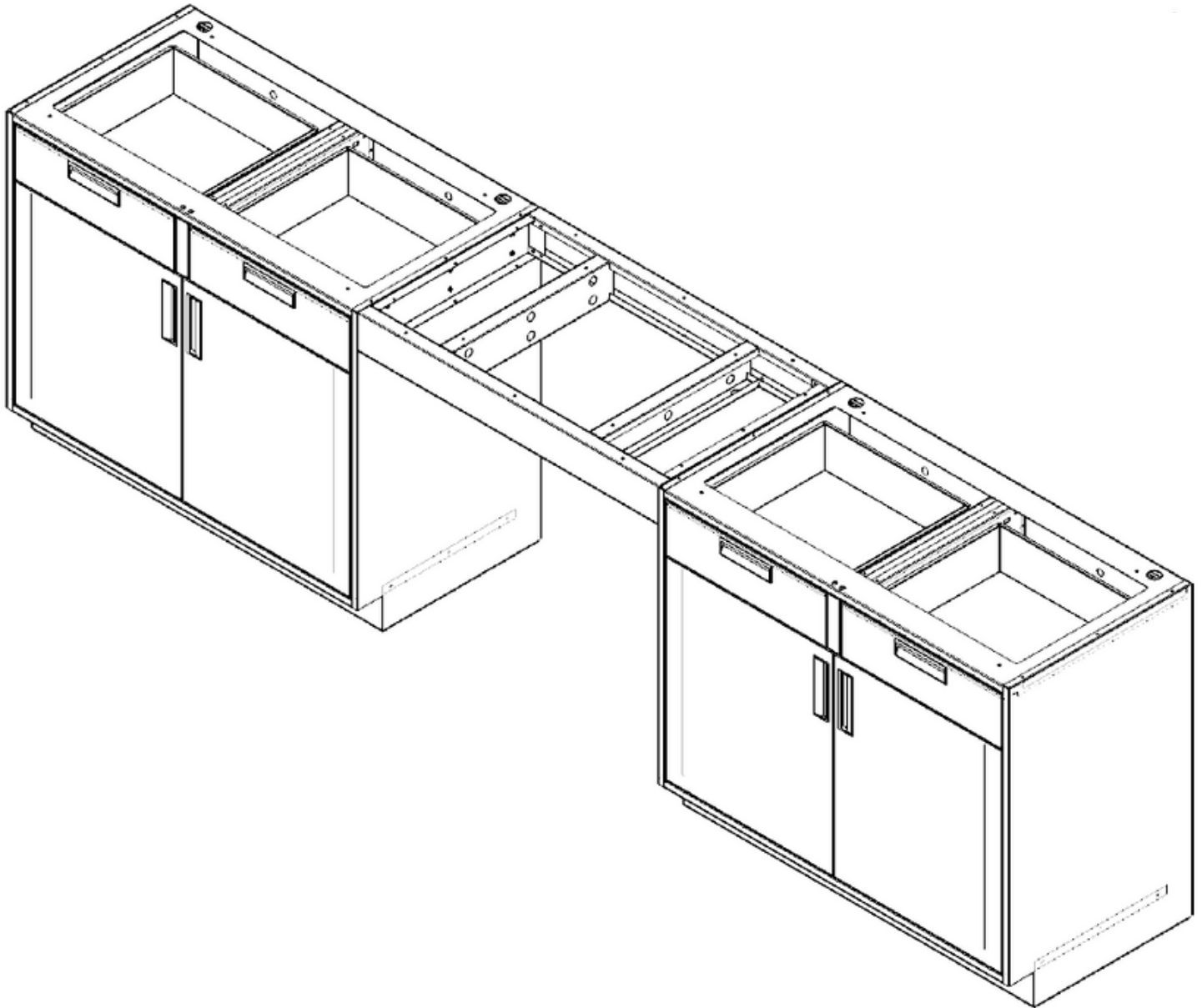
CABINET TO APRON

12X 

#10X 3/4"
HEX HEAD SELF
DRILLING SCREW



5/16 NUT
DRIVER



CABINET INSTALLATION

CABINET TO APRON

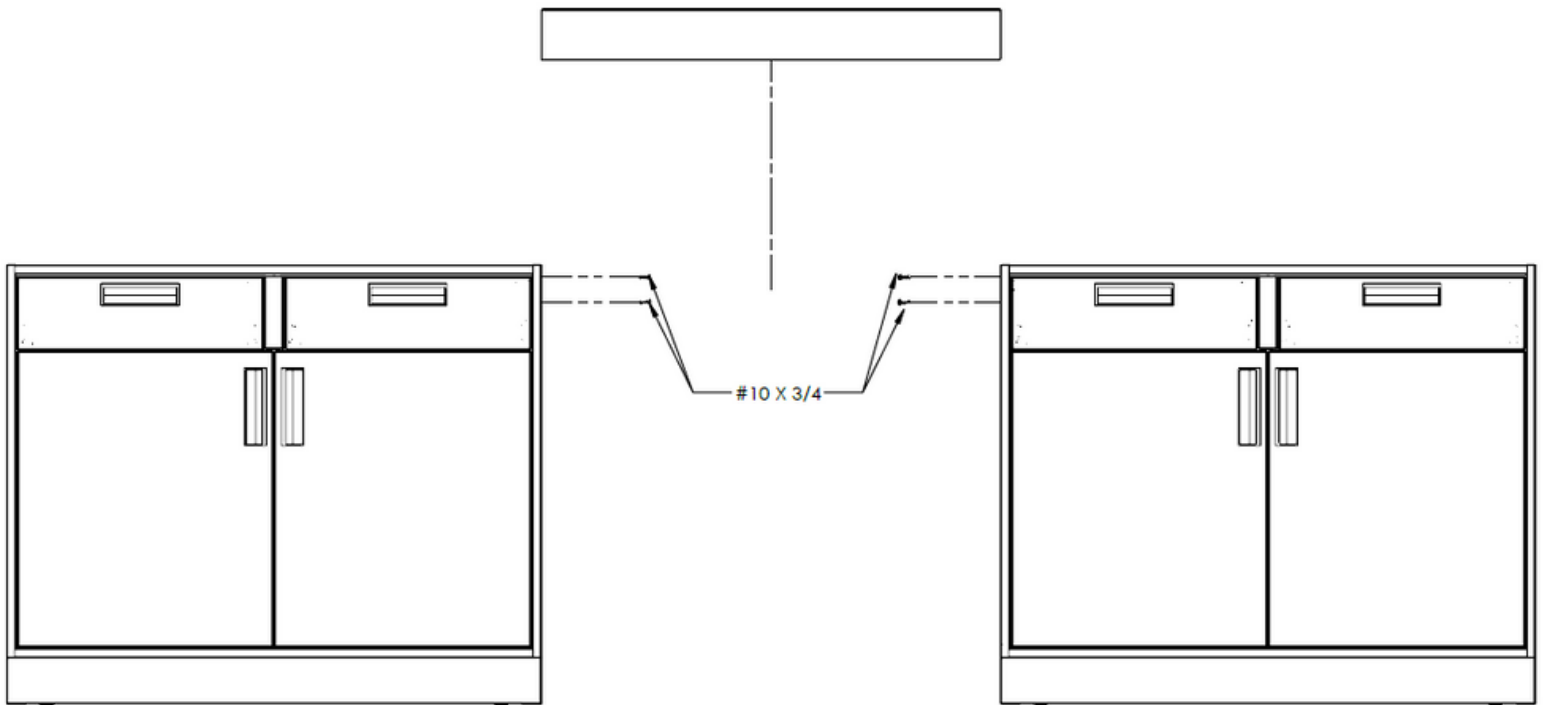
12X



#10X 3/4"
HEX HEAD SELF
DRILLING SCREW



5/16 NUT
DRIVER

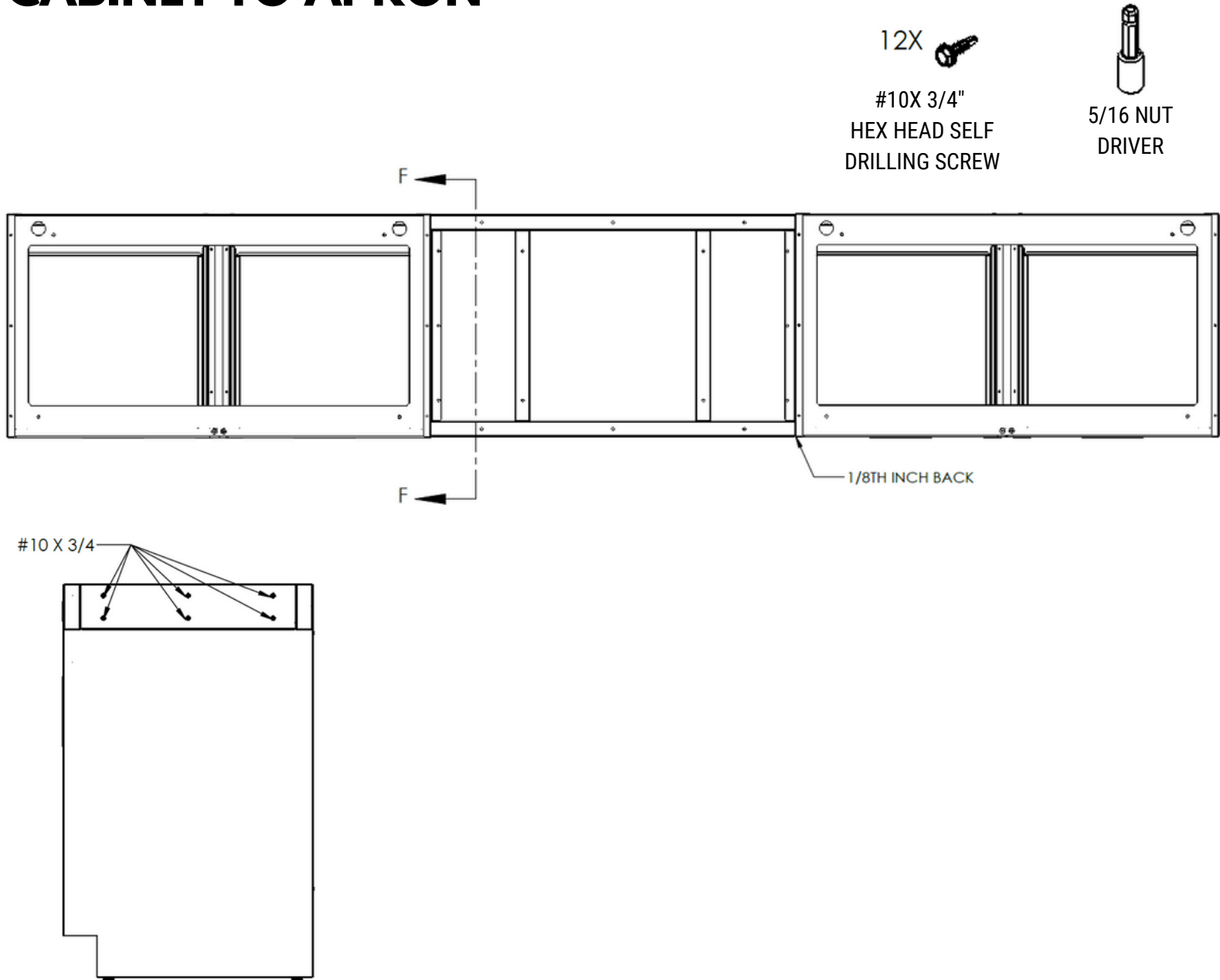


SET AND LEVEL CABINETS ON EITHER SIDE OF APRON, ENSURING GAP BETWEEN CABINETS IS THE WIDTH OF THE APRON. SLIDE APRON IN FROM ABOVE UNTILL IT IS FLUSH ON TOP WITH OTHER CABS.



CABINET INSTALLATION

CABINET TO APRON



WITH APRON FLUSH ON TOP SLIDE IT BACK ~1/8TH OF AN INCH FROM THE FRONT OF THE CABINET.
USING 12 #10 X 3/4 SELF DRILLING SCREWS SECURE THE APRON TO THE CABINETS.



CONTACT INFORMATION

For any questions or concerns contact us

(866) 612-7312

info@onepointesolutions.com

1112 Swenson Blvd.

Elgin, Texas 78621

