



CANNABIS LAB DESIGN

OVERVIEW

(866) 612-7312

INFO@ONEPOINTESOLUTIONS.COM

 **ONEPOINTE SOLUTIONS**

Cannabis + OnePointe Solutions

Overview

Because Cannabis is also such a new industry, traditional lab designs may not fit the needs of your testing lab. It's important to find a reputable cannabis lab furniture dealer that will meet all of your needs and go above and beyond to ensure you are setup for success.

Over the last ten years, we have become the leading custom lab furniture supplier, and manufacturer of industrial workbenches in the country. We don't believe in the one-size-fits-all model, and we value the relationship we build with each and every client.

Call (866) 215-8189 to get in touch today to learn more about our cannabis laboratory furniture solutions. We offer complimentary designs, 3D drawings, and on-site measurement visits with every order.

Cannabis Lab Design

Cannabis Lab Equipment

The cannabis industry relies on state-of-the-art equipment capable of handling the complex, unique science of marijuana testing. Here are the most common instruments you'll see in modern cannabis testing centers:

Gas Chromatography (GC): The GC specializes determines cannabinoid classifications and THC potency. It also detects the presence of residual solvents.

Liquid Chromatography (HPLC): The HPLC specializes in potency readings, capable of measuring levels of THC, THCA, CBD, CDBA and CBN.

Mass Spectrometry (MS): Capable of detecting toxins like pesticides and other chemicals commonly used in the legal cannabis trade.

Cannabis Lab Design

Appropriate Lab Space

It is important to furnish your lab space with the proper instruments and equipment necessary to comply with state laws and environmental regulations, as well as provide a safe environment for your employees. You will want to consider the following essential areas as you start designing your lab:

Working Areas: High quality furniture such as laboratory workbenches and tables

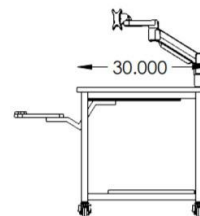
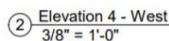
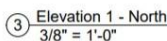
Ventilation: Fume hoods

Storage: Odor-containing storage including lab cabinets and casework.

Safety: Eye wash stations, emergency showers, and flammable gas alarm systems that comply with your local Fire Department regulations.

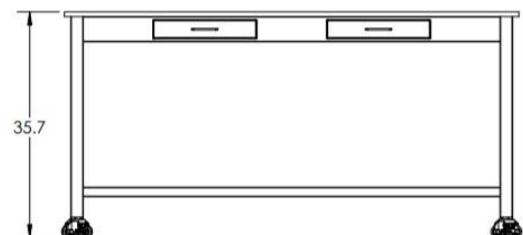
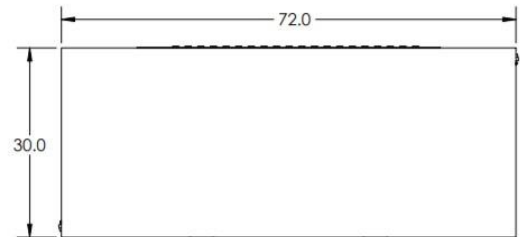
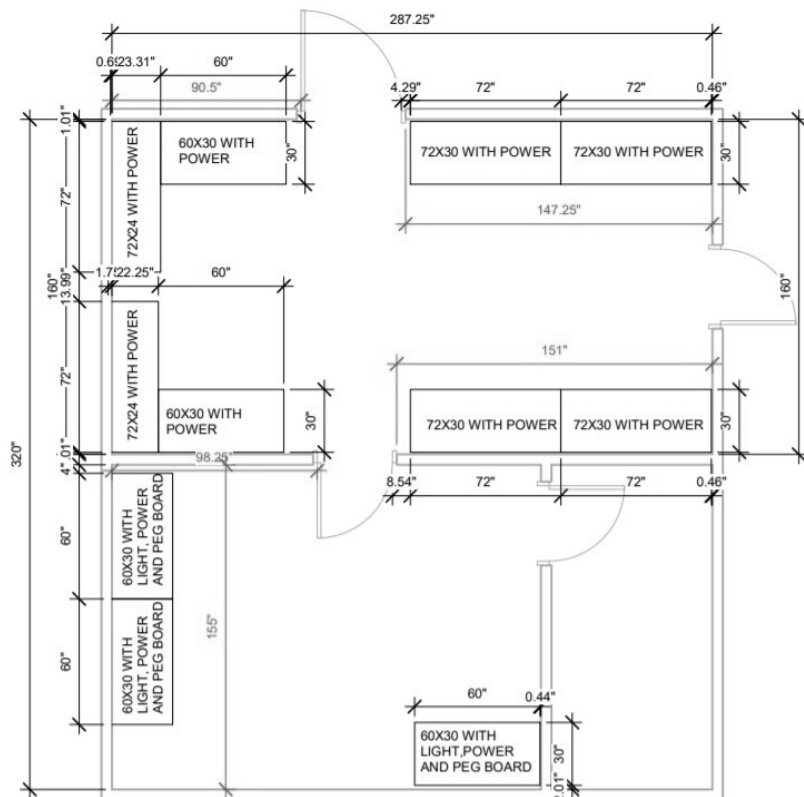
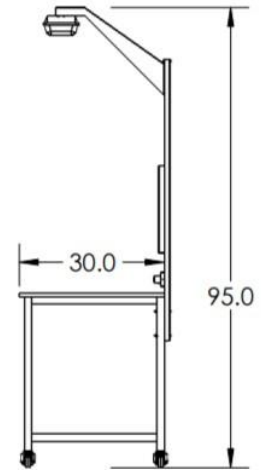
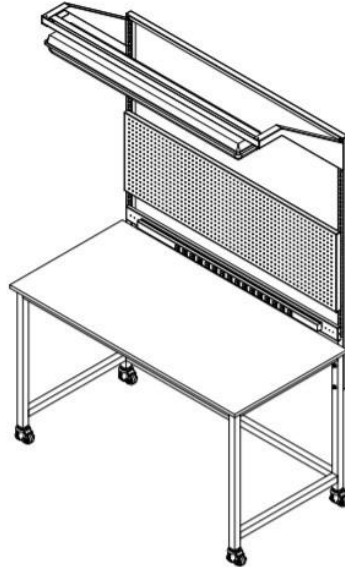
Lab Society

Lab Society is a cannabis testing equipment company. They manufacture all their products in the US and create and design lab spaces for those getting into the industry.



Ga Xtracts

Technical drawing of the 'Ergonomics' chair. The drawing shows the chair's profile with three dimensions indicated: a width of 58.1, a seat height of 18.1, and a total height of 36.0. The chair features a mesh backrest and a seat with a horizontal ribbed pattern. The base is a four-legged metal frame with casters on the front legs.



Gallery



Lab Society

The background of the entire page is a repeating pattern of blue triangles pointing in different directions, separated by white lines.

Thank You.

Give us a call at (866) 612-7312 or email
info@onepointesolutions.com for help with your
cannabis lab design.

(866) 612-7312

INFO@ONEPOINTESOLUTIONS.COM

 **ONEPOINTE SOLUTIONS**