



LAB DESIGN

Table of Contents



004	Who We Are
005	Lab Products
006	Area of Expertise
007	Our Process
008	Past Projects
021	Installation Service





We Are a Laboratory Design Firm

OnePointe Solutions is a leading lab construction and design company, scientific furniture manufacturer, and lab builder. Our projects range from classrooms to Biosafety Level (BSL) -3 and BSL-3+ enhanced labs.

We can source anything you need for your project from the surface options, specific materials and provide custom quality designs that match your vision. Our 50,000 square foot facility is ideal for supplying architects, contractors, and scientists with fast and flexible design and custom manufacturing services.

With over a decade of experience as a manufacturer and access to a vast network of additional equipment providers, we are a one-stop-solution for partners seeking to expand their laboratory capabilities. We take pride in providing customers with high quality, custom manufacturer direct laboratory furniture.

By ordering from us, you will have access to our expert team of designers and project managers.

Lab Products

Core Products

- Casework
- Workbenches
- Carts
- Fume Hoods
- Chairs
- Countertops
- Table Tops

Countertops

- Epoxy Resin
- Phenolic Resin
- Stainless Steel
- ESD Laminate
- HDPE
- Maple Block
- Solid Surface

Instrumentation Carts

- Mass Spec
- Gas/Liquid Chromatography
- Pyrolysis
- Imaging
- BSL 2 and 3

Who We Work With

- Architects
- General Contractors
- Scientists
- Landlords

Areas of Expertise

- Generic Wet Chemistry
- Generic Biology & Life Science
- Generic Computational
- General Materials Science
- General & Specialized Nanotechnology
- General Analytical (GC, MS, etc.)
- Genetic Research
- Animal Research
- Hot Lab/Radiation
- Cleanrooms
- Cannabis Testing
- Dental/Medical
- Oil & Gas
- GeoChemistry & GeoMechanical
- Pyrolysis Laboratory
- Core Analysis Lab
- Molecular Spectroscopy
- Dedicated NMR
- Dedicated Process Chemistry
- Dedicated Organic Chemistry
- Catalyst Research and Production

Our Process

We Work Will You

We provide you with 100% free consultations. Over the phone, virtually via Microsoft Teams, or in our office if you like to come see how we operate. We want to give you the confidence that your project will get done right the first time.

We Install It

Our salaried install team delivers, unloads, and installs your laboratory per our drawings

We Draw It

We provide a 3D /ISO view, top down, and elevation drawings that address your pain points.

Completion

We do not leave until 100% satisfaction. We provide superior customer service and support once the project is finished.

We Manufacture It

We build everything for your lab, to your exact specifications and to perfectly fit your space. Which means we control quality and can guarantee customer satisfaction.



*If you need an in-person consultation at your facility, speak with a rep to learn more about our on-site consultations.



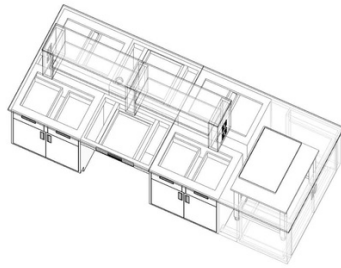
PAST PROJECTS



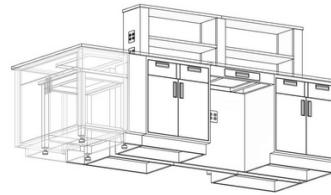
Lab Design for Cosmetic Industry



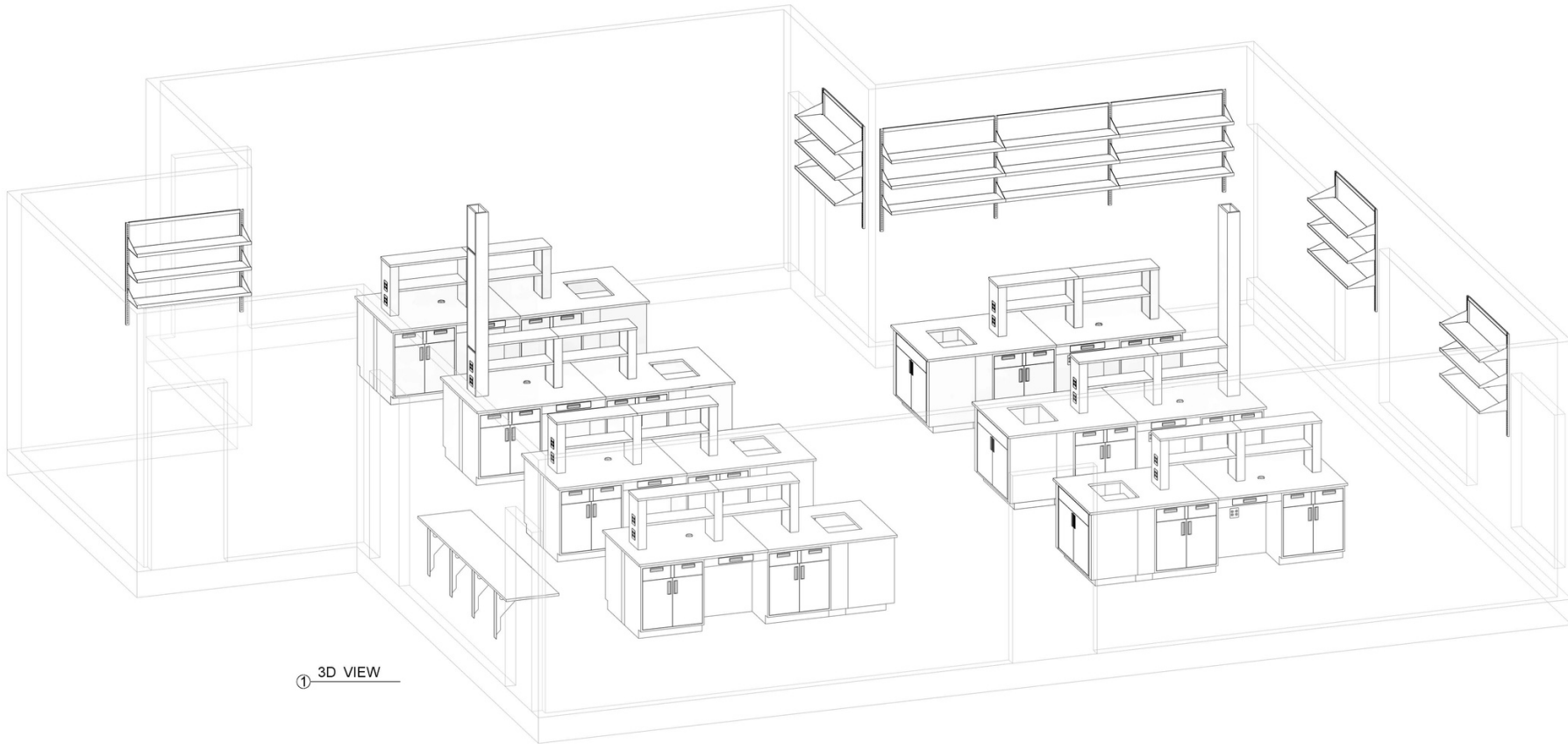
② AV TABLE 3D VIEW



③ AV TABLE - INTERNAL VIEW



④ AV TABLE - INTERNAL VIEW 2



① 3D VIEW

Casework Schedule		
Part Number	Description	Part Quantity
18751-AVTBL-30X24X28.75	2in. TUBE C-FRAME ANTI-VIBE TABLE W/ 0.75B PHENOLIC TOP	7
18751-KSPK-3130	KNEESPACE PANEL KIT WITH INTEGRATED OUTLET	7
18751-RSS-247612	REAGENT SHELVING SYSTEM WITH 4 INTEGRATED OUTLETS	5
18751-RSSC-247612	REAGENT SHELVING SYSTEM WITH SERVICE CHASE & 4 INTEGRATED OUTLETS	2
APRON-043022-1A	APRON WITH DRAWER	14
BASE-353022-22-A	BASE CABINET 2 DRAWER 2 DOOR	28
CTSB-22	COUNTERTOP SUPPORT BRACKET KIT	4
E2500	RECESSED ELECTRICAL OUTLET DOUBLE GANG	35
FFK-3508	FRONT FILLER KIT	14
GROM-TOP-HS	2.375 IN BLACK GROMMET FOR TOPS	7
ISINK-3548-A	ISLAND SINK - FLOOR REMOVED	7
KSPK-3130	KNEESPACE PANEL KIT	7
PR11 0B LOT	PHENOLIC RESIN LAB GRADE 1.0 BLACK	15
RFK-3504	REAR FILLER KIT	7
ROUT-CHASE	4" X 2" REAGENT TOWER CHASE CUTOUT	14
ROUT-HOLE	24" X16" CUTOUT FOR WARMER/COOKER	7
ROUT-HOLE<3	Holes < 3	7
WSS-485613-3	WALL SHELVING SYSTEM	4
WSS-4816413-3	WALL SHELVING SYSTEM	1

* WALL SHELVING TO HAVE POWDER COATED METAL SHELVES WITH NO LIP.



www.onepointesolutions.com

Bayport Laboratories Corp.

SO# 18751

DESIGN PROPERTY OF
ONEPOINTE SOLUTIONS LLC.
DO NOT REPRODUCE WITHOUT
WRITTEN CONSENT.

PROJECT OVERVIEW

Date: 3/3/2020 9:56:16 AM

DRAWN BY: JPR

CHECKED BY: SAB

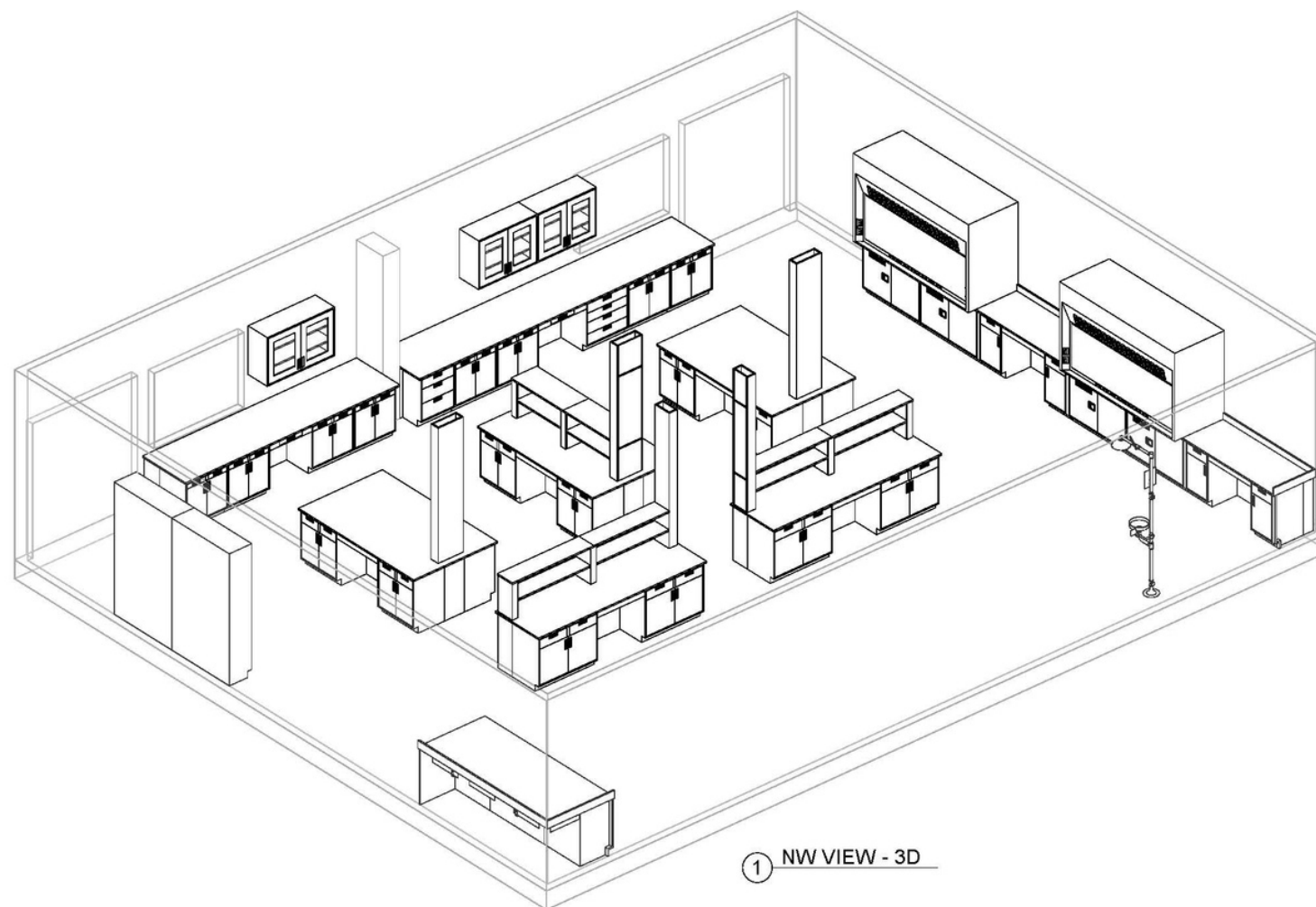
A201

Scale:





Lab Renovation for Medical Device Start-Up



Casework Schedule

Part Number	Description	Part Quantity
06in Fume Hood	Fume Hood	2
17690-BMC-FLAM-354822-SC	FLAMMABLES STORAGE CABINET	4
APRON-3022-1A	APRON WITH DRAWER	1
APRON-3422-0	APRON NO DRAWER	8
APRON-3422-1A	APRON WITH DRAWER	1
APRON-3622-0	APRON NO DRAWER	2
APRON-4522-1A	APRON WITH DRAWER	1
BASE-3224-30-A	BASE CABINET 3 DRAWER	1
BASE-3230-22-A	BASE CABINET 2 DRAWER 2 DOOR	8
BASE-3230-40-A	BASE CABINET 4 DRAWER	1
BASE-3518-11L-A	BASE CABINET 1 DRAWER 1 DOOR	2
BASE-3518-11R-A	BASE CABINET 1 DRAWER 1 DOOR	2
BASE-3530-02-A	BASE CABINET 2 DOOR	2
BASE-3530-22-A	BASE CABINET 2 DRAWER 2 DOOR	12
BASE-3542-22-A	BASE CABINET 2 DRAWER 2 DOOR	4
CLEAT-12	WALL CLEAT KIT	1
CLEAT-21	WALL CLEAT KIT	11
FSK-3502	FRONT SCRIBE KIT	5
ICT-14	ISLAND CENTER TIE BRACKET ASSEMBLY	6
ICT-25	ISLAND CENTER TIE BRACKET ASSEMBLY	2
KSPK-2830	KNEESPACE PANEL KIT	1
KSPK-2834	KNEESPACE PANEL KIT	1
KSPK-3134	KNEESPACE PANEL KIT	8
KSPK-3136	KNEESPACE PANEL KIT	2
KSPK-3145	KNEESPACE PANEL KIT	1
PRL1.0B LOT	PHENOLIC RESIN LAB GRADE 1.0 BLACK	10
REPK-328012	REAR ENCLOSURE PANEL KIT	1
REPK-328412	REAR ENCLOSURE PANEL KIT	1
REPK-355912	REAR ENCLOSURE PANEL KIT	4
ROUT-CHASE - CUTOUT	ROUT-CHASE - CUTOUT	5
RSK-3202	REAR SCRIBE KIT	2
RSK-3213	REAR SCRIBE KIT	1
RSK-3507	REAR SCRIBE KIT	8
RSK-3514	REAR SCRIBE KIT	6
RSK-3525	REAR SCRIBE KIT	1
RSSC-248818	Reagent Shelving System with Chase	1
RSSC-2411812	Reagent Shelving System with Chase	2
SCA-861806	Service Chase Assembly	2
TALL-4816-G-A	TALL CABINET GLASS DOORS	2
WALL-314216-GA	WALL CABINET GLASS DOORS	2
WALL-314816-GA	WALL CABINET GLASS DOORS	1
WSF-SS950	SAFETY SHOWER	1

POWDER COLOR: WHITE [GLOSS]
ACRYLLIC: TEAL
PULL SELECTION: RECESSED
TOP MATERIAL: PRL1.0B



www.onepointesolutions.com

RxSight

SO# 17690

DESIGN PROPERTY OF
ONEPOINTE SOLUTIONS LLC.
DO NOT REPRODUCE
WITHOUT WRITTEN CONSENT.

PROJECT OVERVIEW

Date 06/04/2019
Drawn by JPR
Checked by SB

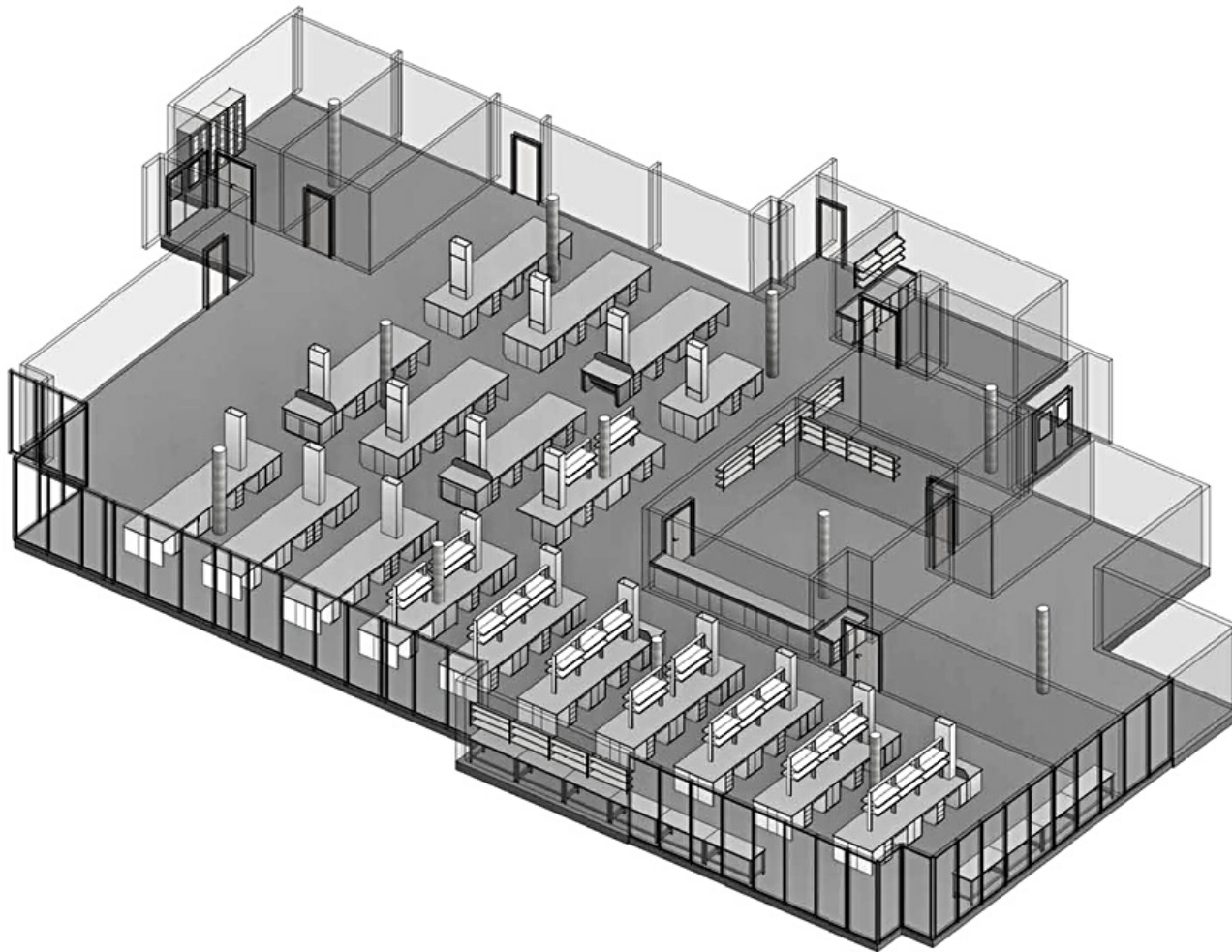
A101

Scale





Lab Design & Renovation for Biotherapeutic Development



POWDER COLOR: WHITE (9016) GLOSS
 PULL SELECTION: ALUM. RECESSED
 TOP MATERIAL: PLR 1.0 BLACK

2 3D RESEARCH LAB.



www.onepointesolutions.com

DZI

SO# 15292

No.	Description	Date

PROJECT OVERVIEW

Date 2/22/18
 Drawn by Z. BAUM
 Checked by J. OROZCO

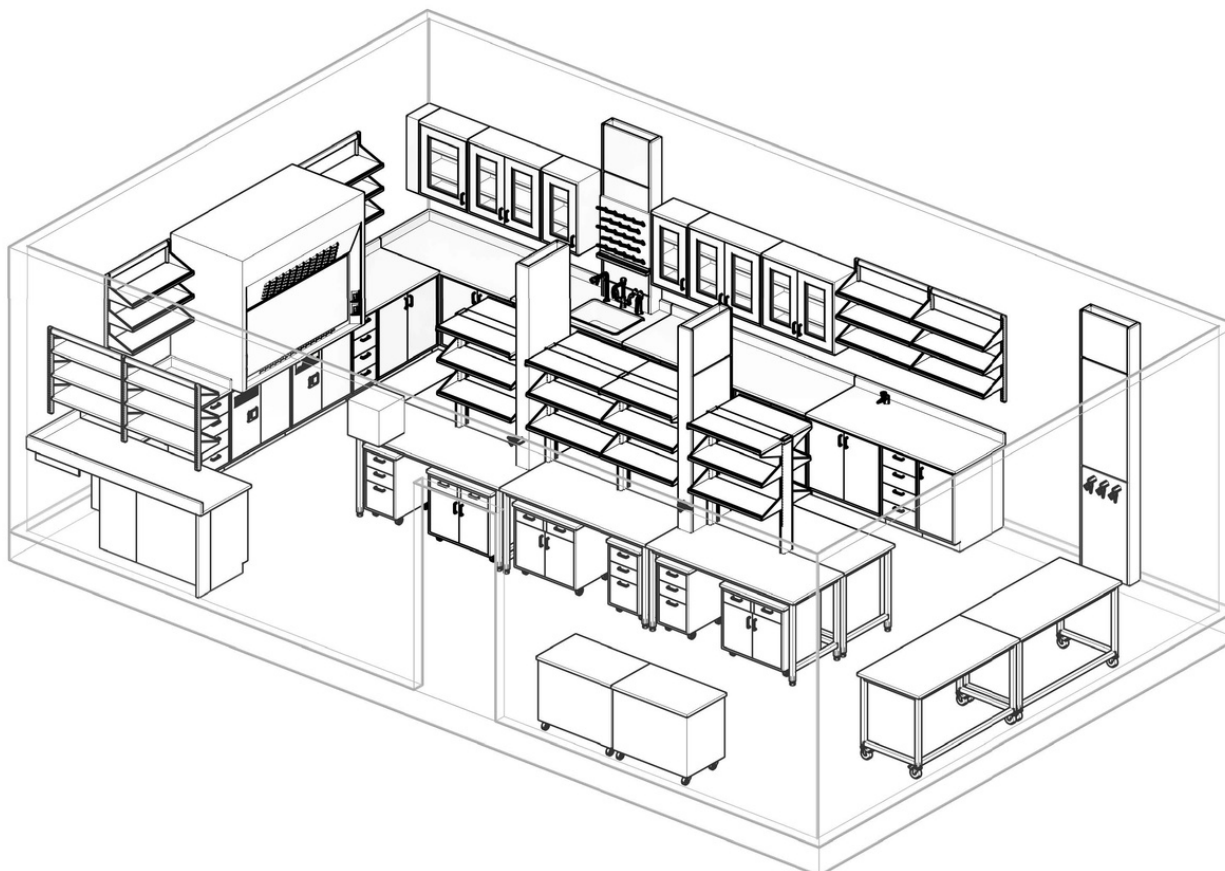
A101

Scale





Lab Design for Collegiate Use



Casework Schedule

Part Number	Description	Part Quantity
6' PROTECTOR PREMIER FUME HOOD	6' PROTECTOR PREMIER FUME HOOD WITH 2 SERVICE FIXTURES AND 1 GFCI DUPLEX	1
18168-BASE-3518-01R-W	BASE CABINET 1 DOOR WITH SLIDE OUT TRAY	2
18168-BASE-3536-02-W	BASE CABINET 2 DOOR WITH SLIDE OUT TRAY	7
18168-MOB-311522-30-060612-W-PRL1.0B	18168-MOBILE CABINET 3 DRAWER WITH TOP	6
18168-MOB-313622-02-W-PRL1.0B	18168-MOBILE CABINET 2 DOOR WITH TOP	1
18168-MOB-313622-22-W-PRL1.0B	18168-MOBILE CABINET 2 DRAWER 2 DOOR WITH TOP	6
18168-MOB-313622-30-060612-W-PRL1.0B	18168-MOBILE CABINET 3 DRAWER WITH TOP	1
18168-RSSC-488224-L	18168-REAGENT SHELVING SYSTEM WITH CHASE	1
18168-SCA-1092406	18168-Service Chase Assembly	1
18168-TBL-60x30x36	18168-WORKBENCH-60x30x36	1
18168-TBL-72x30x36-A	18168-WORKBENCH-72x30x36-A	2
18168-TBL-72x30x36-B	18168-WORKBENCH-72x30x36-B	2
18168-TBL-72x30x36-C	18168-WORKBENCH-72x30x36-C	2
ACID-353622	ACID STORAGE CABINET	1
BASE-3515-40-W	BASE CABINET 4 DRAWER	1
BASE-3518-40-W	BASE CABINET 4 DRAWER	4
CFK-3501	CORNER FILLER KIT	2
CLEAT-15	WALL CLEAT KIT	2
CLEAT-21	WALL CLEAT KIT	7
FLAM-353622-SC	FLAMMABLES STORAGE CABINET	1
FSK-3501	FRONT SCRIBE KIT	1
ISS-4838-3	ISLAND SHELVING SYSTEM	2
PEGB-2424-4 B	PEGBOARD EPOXY BLACK	1
PRL1.0B LOT	PHENOLIC RESIN LAB GRADE 1.0 BLACK	9
ROUT-HOLE<3	Holes < 3	4
ROUT-SINK-DROP-IN	SINK CUTOUT - DROP-IN	2
RSK-3507	REAR SCRIBE KIT	4
SCA-732406	Service Chase Assembly	1
SDR-24-2	SDR DRIP TRAY	1
SINK-3536-W	SINK CABINET	1
SNKD-50-B	SINK WITH OUTLET	1
SPILLSTOPPER WORK SURFACE 72"x30"	6' X 30' SPILLSTOPPER WORK SURFACE	1
WALL-311813L-GW	WALL CABINET GLASS DOORS	2
WALL-312413L-GW	WALL CABINET GLASS DOORS	1
WALL-313813-GW	WALL CABINET GLASS DOORS	3
WSF-E9858	WATER SAVERS EMERGENCY SHOWER	1
WSF-EW1022	WATER SAVERS EYE WASH	1
WSF-L412-VB-BH	WATER SAVERS FAUCET	1
WSF-L2880-131WSA	WATER SAVERS GAS VALVE	1
WSF-L5100F-225WSA	WATER SAVERS WATER VALVE	2
WSF-L5180F-225WSA	WATER SAVERS GAS VALVE	5
WSF-L7833	WATER SAVERS FAUCET	1
WSK-310813	WALL SCRIBE KIT	1
WSS-363813-3	Wall Shelving System	2
WSS-367413-3	Wall Shelving System	2

POWDER COLOR: LIGHT GREY
PULL SELECTION: WIRE
TOP MATERIAL: PRL1.0B

① 3D OVERVIEW

ALL FIXTURES TO BE
SATIN NICKEL

ALL DOOR CABINETS
TO HAVE LOWER
SLIDOUT TRAY



www.onepointesolutions.com

BAYLOR UNIVERSITY

SO#18168

DESIGN PROPERTY OF
ONEPOINTE SOLUTIONS LLC.
DO NOT REPRODUCE
WITHOUT WRITTEN CONSENT.

PROJECT OVERVIEW

Date 10/25/2019
Drawn by CLARISSA
Checked by NICK

A101

Scale



Installation Services

Installation Planning

When you order with our company, you are assigned a project manager to help with every detail of the install process, from manufacturing of casework and workbenches and cabinetry, to payment and fulfillment.

Site Logistics

Our team inspects your facility to determine the safest, most logical and least intrusive installation path into your facility.

Logistics

We ensure that all logistics are ready, we schedule delivery trucks and our personnel to offload and install at your facility.

Our Install Team

We do not hire out contractors to install our products. We have a factory trained installation team who exclusively installs our product.

Safety & Security

We adhere to any safety and security requirements that your company may have. We supply any necessary documentation to ensure our team is approved and prepared to enter your facility.

Site Clean Up

Throughout the installation process, all packaging material will be disposed up properly to leave your facility clean upon departure.

Post Installation Follow-up

After your installation is complete, we provide a follow up call or site visit to your facility to ensure that you are completely satisfied with your installation. If you have any issues after installation, we are here to help.



Full Lab Designs

•
Short Lead Times

•
Fast Quotes

•
OnePointe Solutions

1112 Swenson Blvd, Elgin, Texas 78621
(866) 612-7312
onepointesolutions.com/
info@onepointesolutions.com

