

# THE WOMEN GLOBAL CANCER INITIATIVE

## Laboratory Design & Build

### THE ORGANIZATION

The Women Global Cancer Initiative is a world-wide organization with the focus of breaking barriers of inequities in health care for women diagnosed with gynecological cancer. They have carried out many projects across the globe in Liberia, South Africa, Grenada, and New York City.

### THE PROBLEM

In Liberia, two civil wars had left the country with no reliable source of a health care system. The Women Global Cancer Initiative was driven to plan the first post-war pathology lab at the JFK Memorial Hospital.

In 2018, in collaboration with the Icahn School of Medicine at Mount Sinai, we aided the Women Global Cancer Initiative with the design and shipping, from the United States to Liberia, of custom countertops and cabinets for the pathology lab.

### INVOLVED PARTIES

OnePointe Solutions

Icahn School of Medicine at Mount Sinai

The Women Global Cancer Initiative

(866) 612-7312

[info@onepointesolutions.com](mailto:info@onepointesolutions.com)

Laboratory and Industrial Furniture

Custom Manufacturing and Design

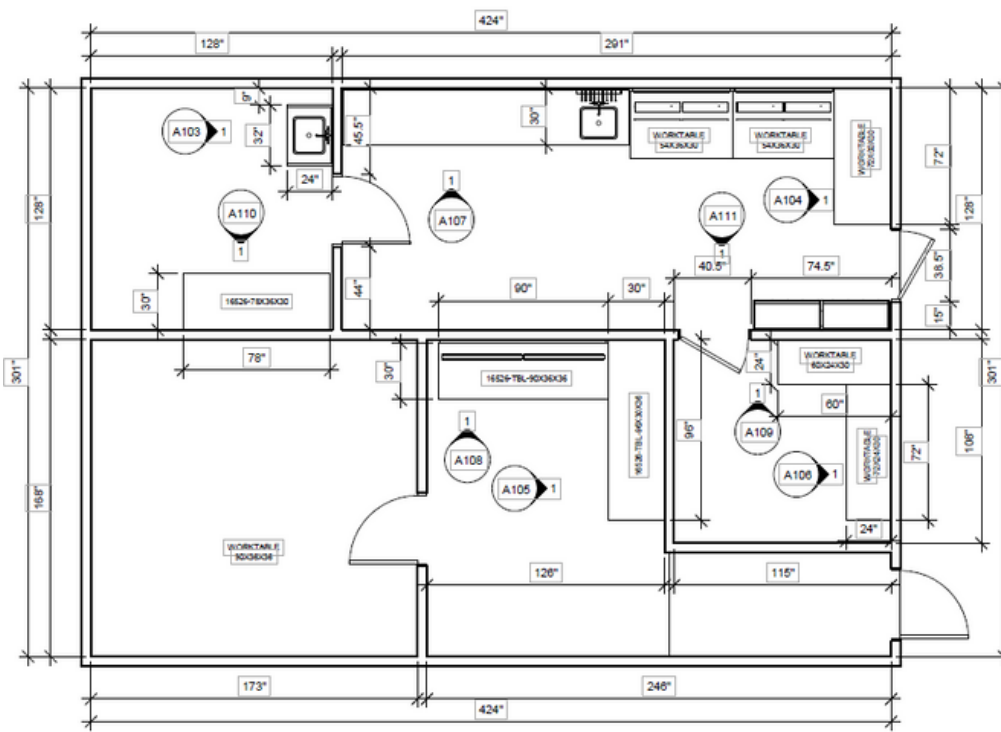
1112 Swenson Blvd., Elgin, TX 78621

# THE WOMEN GLOBAL CANCER INITIATIVE

## Laboratory Design & Build

### THE PROJECT

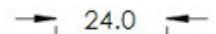
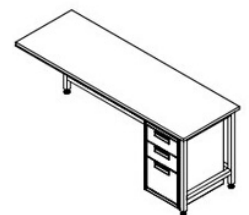
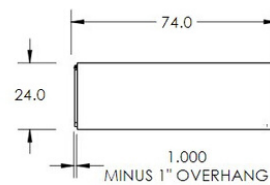
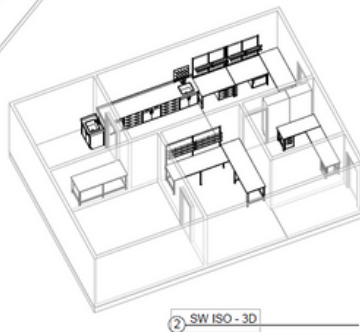
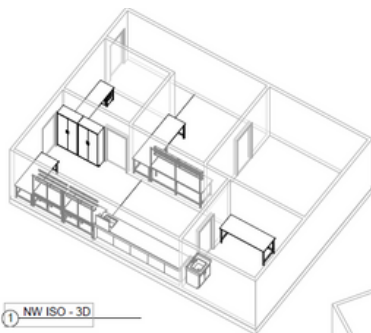
With only a 4,000 square foot building to work with, we were able to deliver a new, fully functional workspace for proper education and training of students.



### Technical Specifications

- Epoxy Resin Countertops
- Phenolic Resin Shelving Racks with Steel Frames
- 7-Flex Computer Monitor Mounts
- Metal Laboratory Casework

The pathology lab included new epoxy resin countertops, metal front cabinets, and shelving.



# ✦ OnePointe Solutions Case Study

# THE WOMEN GLOBAL CANCER INITIATIVE

## Laboratory Design & Build

### THE RESULTS



## Testimonial

*"I want to thank all of you for your patience with me, support, and generosity for making this "soft opening" come to light, and now the students can be properly trained. Most importantly you are truly making a difference to the lives of so many people. I am very grateful to work with all of you and hope this amazing collaboration will continue."*

- Linda Cherepow

We were grateful to be able to make a difference to the lives of so many people.

