

# ✦ OnePointe Solutions Case Study

## LAB RENOVATION FOR CATARACT INNOVATION

### Laboratory Design & Build

## THE ORGANIZATION

RxSight is a privately-held corporation headquartered in Aliso Viejo, California. The global leader in adjustable intraocular technology, RxSight's mission is to empower the global cataract market by enabling doctors and patients to predictably optimize vision after cataract surgery through an office-based IOL enhancement.

## THE PROBLEM

The client's success, in a rapidly growing market, required them to move to a larger space in order to efficiently and affectively handle the demand they were receiving.

## INVOLVED PARTIES

OnePointe Solutions

RxSight



(866) 612-7312  
[info@onepointesolutions.com](mailto:info@onepointesolutions.com)  
Laboratory and Industrial Furniture  
Custom Manufacturing and Design  
1112 Swenson Blvd., Elgin, TX 78621

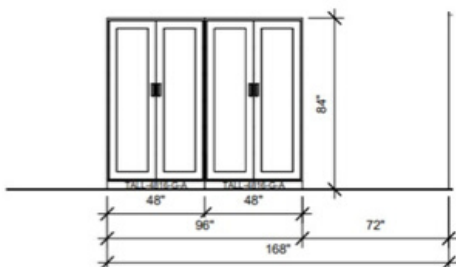
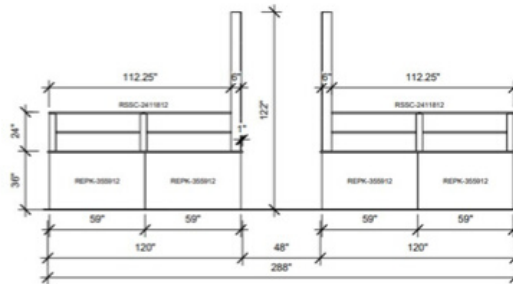
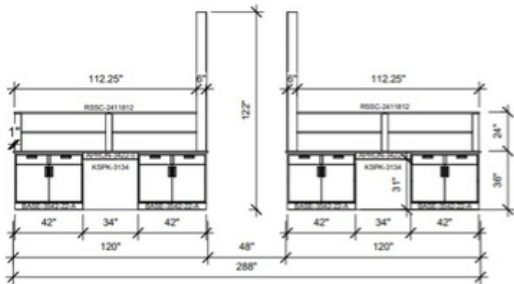
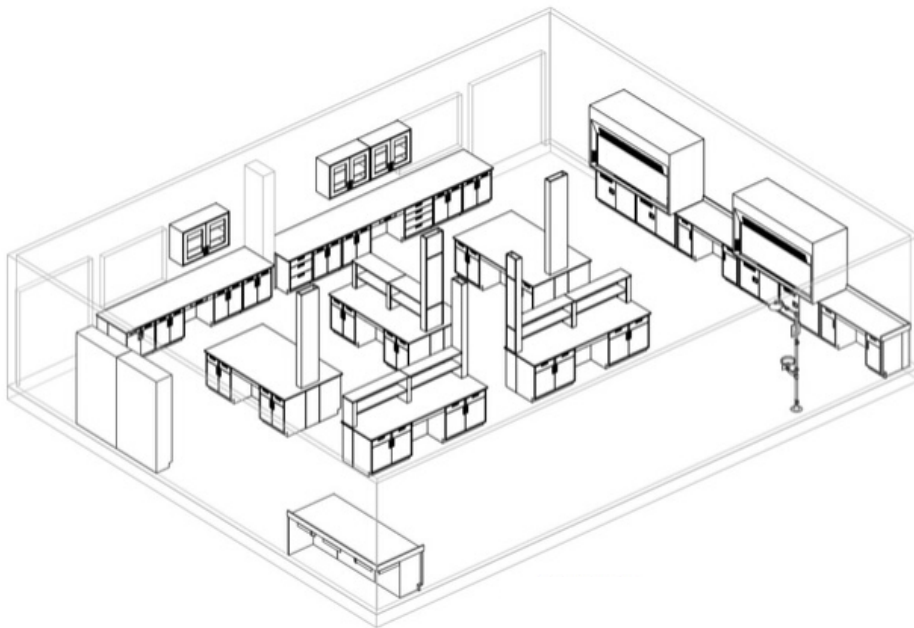
# ✦ OnePointe Solutions Case Study

## LAB RENOVATION FOR CATARACT INNOVATION

### Laboratory Design & Build

## THE PROJECT

Since the client moved to a larger space, we supplied them with lab casework with phenolic resin countertops, fume hoods, tall cabinets and a safety shower.

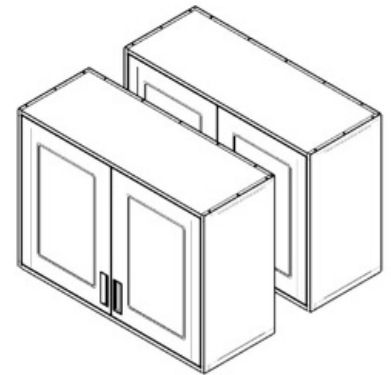


## Technical Specifications

Lab Casework  
Tall Cabinets  
Safety Shower  
Fume Hoods

## Materials & Colors

Phenolic Resin - Black  
White  
Light Blue



To provide a turn key solution from design to the final installation, we went onsite to walk the space and consulted with the end user ironing out concerns and details. The installation for this project was completed in two days.

# ✦ OnePointe Solutions Case Study

## LAB RENOVATION FOR CATARACT INNOVATION

### Laboratory Design & Build

## THE RESULTS



**Our Guarantee**

*At OnePointe Solutions, we guarantee that we can furnish or renovate your existing space at the best value without sacrificing quality. Our team of designers and builders will work with you to create a perfect fit for your ideal lab or work space.*

